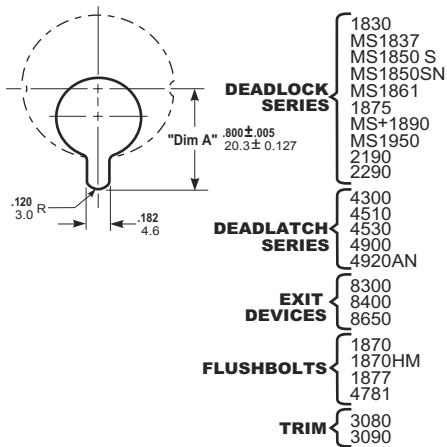


## DIMENSIONS

INCHES  
MILLIMETERS

*Nominal, subject to tolerance extremes.*

### Dimensions of Cam to Operate:



#### DEADLOCK SERIES

- 1830
- MS1837
- MS1850 S
- MS1850SN
- MS1861
- 1875
- MS+1890
- MS1950
- 2190
- 2290

#### DEADLATCH SERIES

- 4300
- 4510
- 4530
- 4900
- 4920AN

#### EXIT DEVICES

- 8300
- 8400
- 8650

#### FLUSHBOLTS

- 1870
- 1870HM
- 1877
- 4781

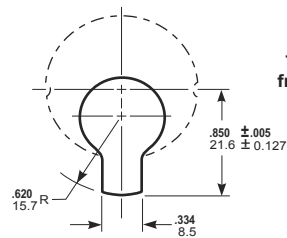
#### TRIM

- 3080
- 3090

### This Cam Available From:

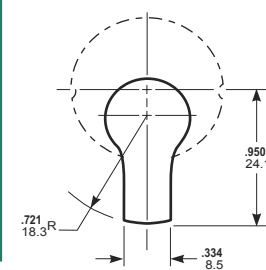
- ADAMS RITE
- ARROW
- ASSA
- BEST
- CORBIN RUSSWIN
- DORMA
- FALCON
- KABA-ILCO
- MEDECO
- SARGENT
- SCHLAGE
- WEISER
- YALE

### Dimensions of Cam to Operate: 4070 Series Deadbolt

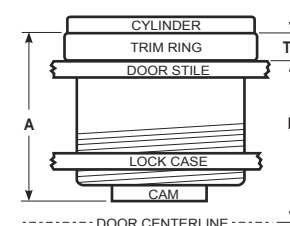


This cam available from above cylinder manufacturers on special order (or make from standard cam)

### Dimensions of Cam to Operate: 2331 Deadbolt



This cam available from all cylinder manufacturers (standard cam)



#### Cylinder Trim Ring for Narrow Stiles

Narrow stiled doors require a trim ring to fill the gap remaining between the cylinder shoulder and stile when a standard mortise cylinder is used. If the security of the hardened steel Adams Rite MS4043 Cylinder Guard is not required, this ring may be simply a length of 1.171 I.D. tubing. Its length varies depending on door thickness or cylinder make and number of pins. The specific length required can be quickly determined by the following formula:

FOR MS® LOCKS:

$$TR' = A + .125 - B$$

FOR 4500 SERIES LATCHES:

$$TR' = A + .0312 - B$$

"A" is cylinder height (less shoulder but including cam).  
"B" is one-half door thickness.

\*TOLERANCE: .060



**Adams Rite**

**ASSA ABLOY**

### ADAMS RITE

10027 S. 51st Street, Ste 102, Phoenix, AZ 85044  
Phone: (623) 582-4626 Fax: (623) 582-4641

© 2014 Hanchett Entry Systems, Inc., an ASSA ABLOY Group Company

### MS4036, 4066 Mortise Cylinder & Thumbturn