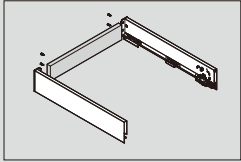
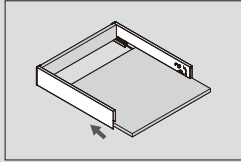


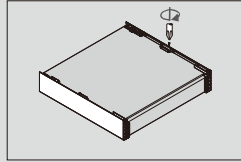
Drawer Assembly



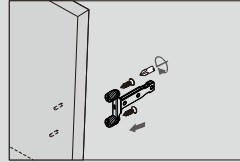
Back assembly



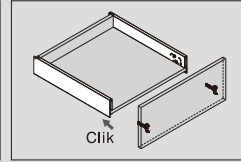
Bottom assembly



Fix screws

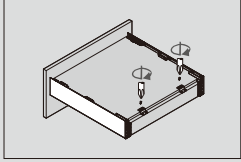


Front assembly

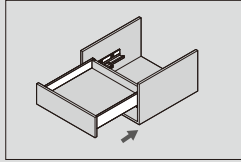


Clik

Drawer Assembly

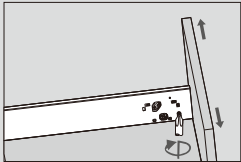


Fixing-brackets assembly

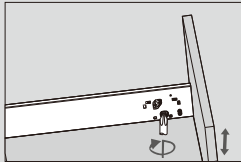


Slide into the cabinet

Adjustments for Std/Medium Drawer (88/126 Height)

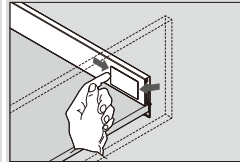


Left&right adjustment

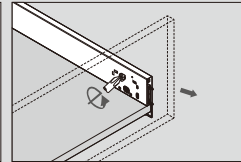


Up&down adjustment

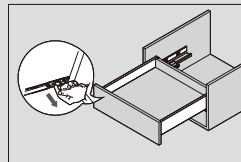
Removal for Std/Medium Drawer (88/126 Height)



Tip up the cover and pull out

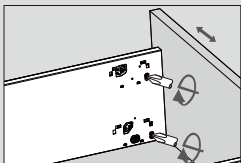


Turn screw driver to release the drawer front

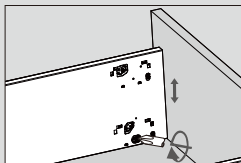


Press the locking device under drawer bottom and pull out the drawer

Adjustments for High/Super High Drawer (172/238 Height)

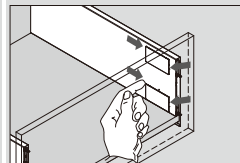


Left&right adjustment

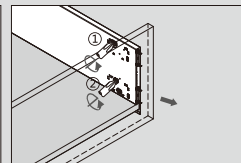


Up&down adjustment

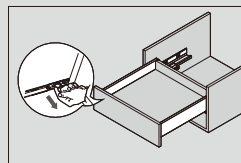
Removal for High/Super High Drawer (172/238 Height)



Tip up the cover and pull out

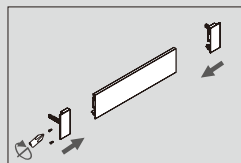


Turn screw driver to release the drawer front

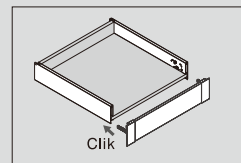


Press the locking device under drawer bottom and pull out the drawer

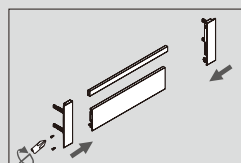
Std Inner Drawer Front Assembly (88 Height)



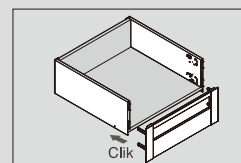
Clik



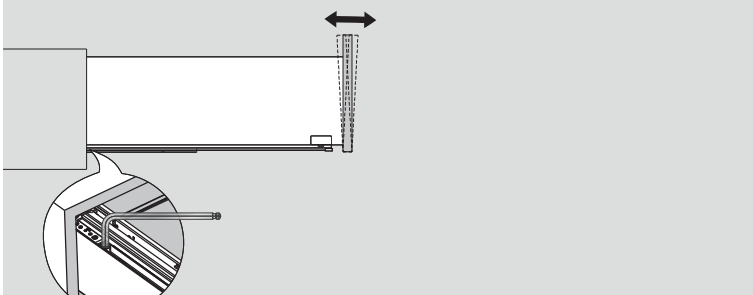
High/Super High Inner Drawer Front Assembly (172/238 Height)



Clik



Tilt Adjustment in Super High Drawer (238 Height)



Tilt adjustment (by M3 Allen key)

