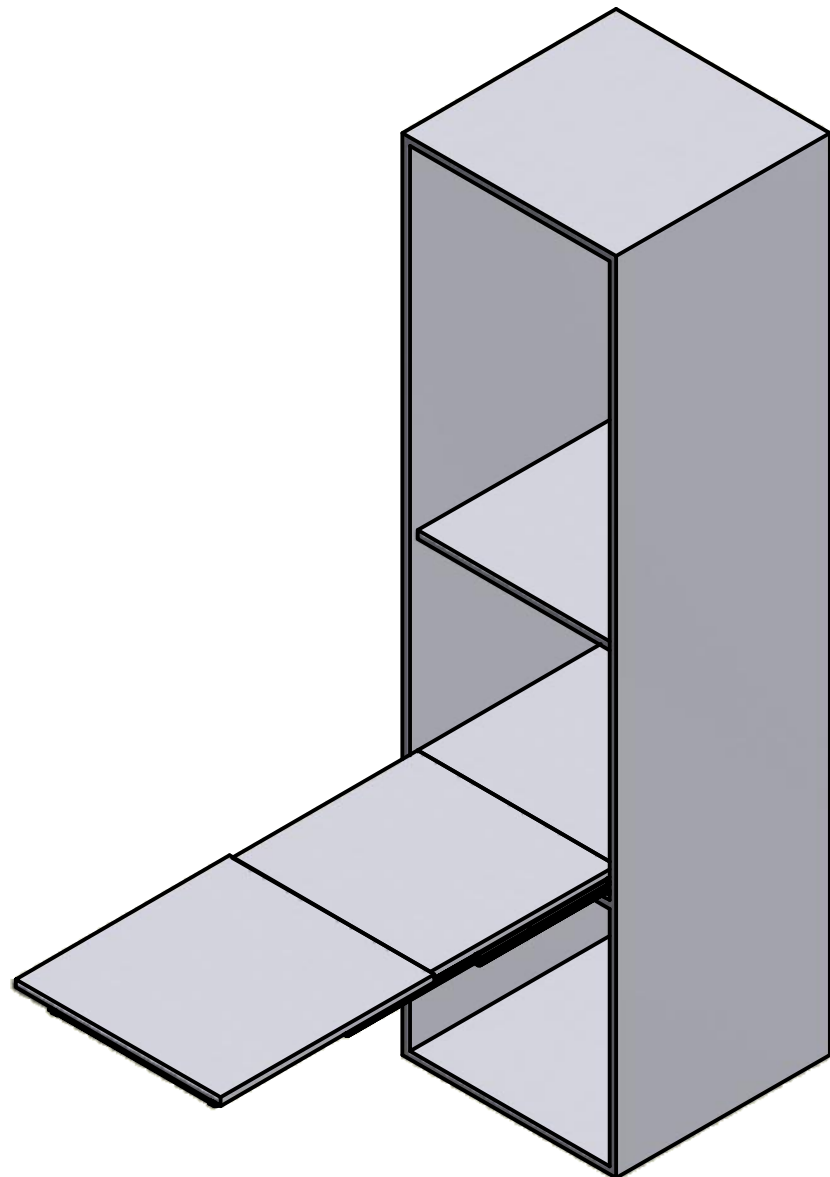


# HOMework

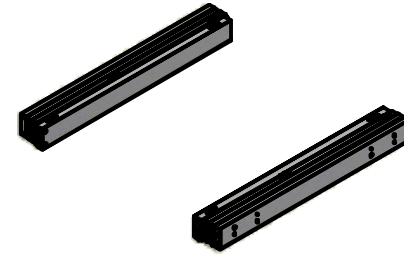
## ISTRUZIONI DI MONTAGGIO ASSEMBLY INSTRUCTIONS

MODELLI:  
MODELS:

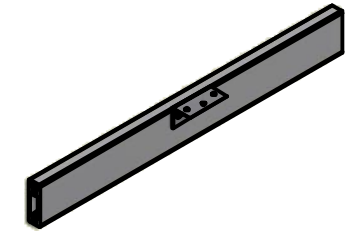
1-901-050 - Homework 600  
1-901-052 - Homework 900  
1-901-054 - Homework 1200



## CONTENUTO DELLA CONFEZIONE INCLUDED IN THE PACKAGING



GUIDE  
SLIDES



TRAVERSO  
CONNECTION BAR

### SACCHETTO ACCESSORI - ACCESSORIES



A. Chiave esa. n.3 - n° 3 Allen key



B. Chiave esa. n.5 - n° 5 Allen key



C. Distanziale per spalla - Side spacer (x 20)



D. Bussola in ottone M6 12x8 mm - M6 12x8 mm brass bush (x 8)



E. Vite TCBCE M5x10 ISO 7380 - M5x10 ISO 7380 screw (x 8)



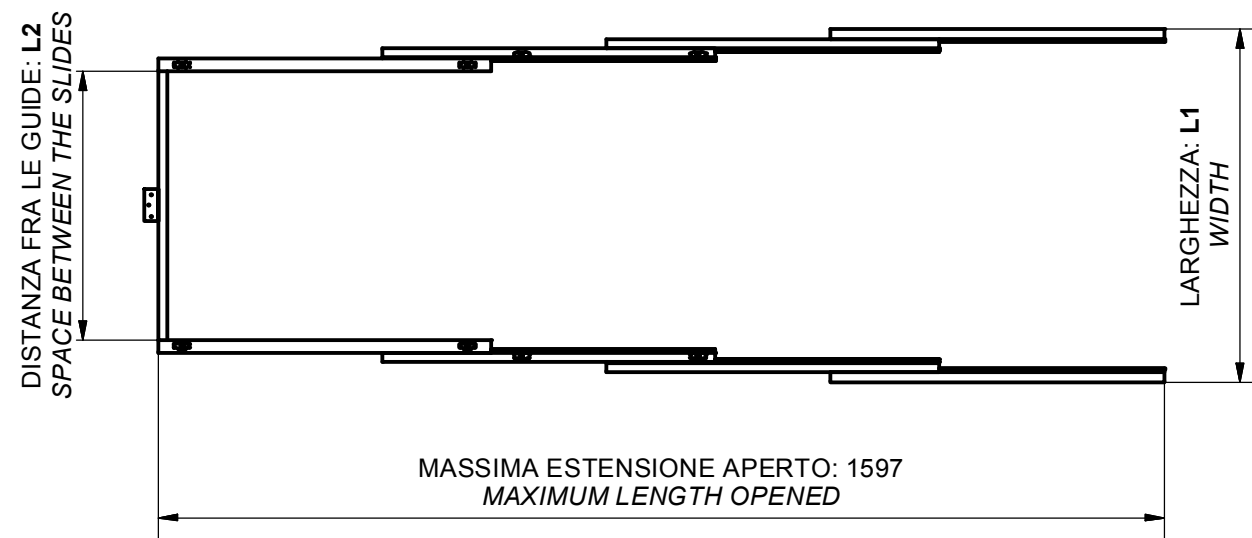
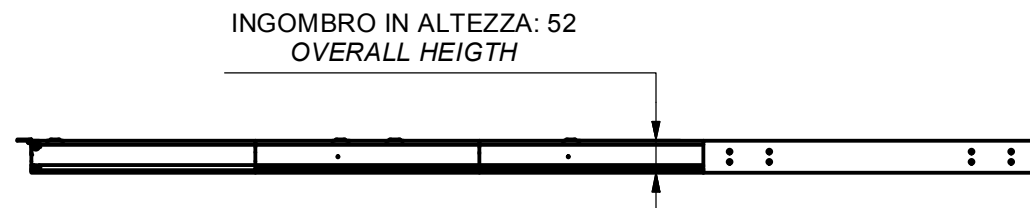
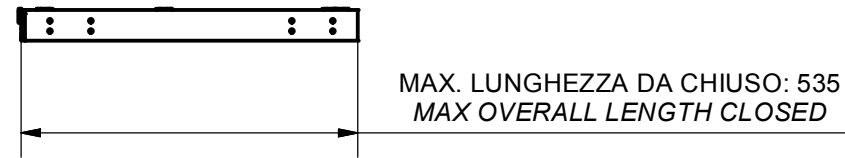
F. Vite TCCE M6x12 - M6x12 socked head cap screw (x 12)



G. Vite truciolare 3.5x16 - 3.5x16 chipboard screw (x3)

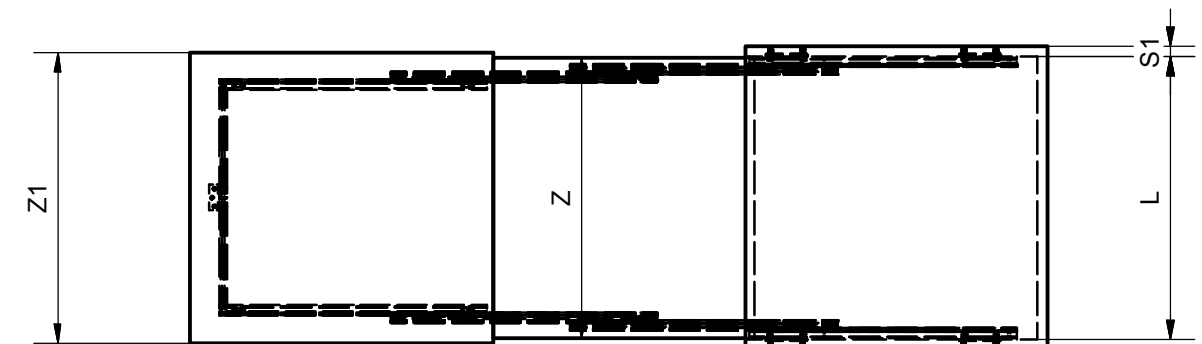
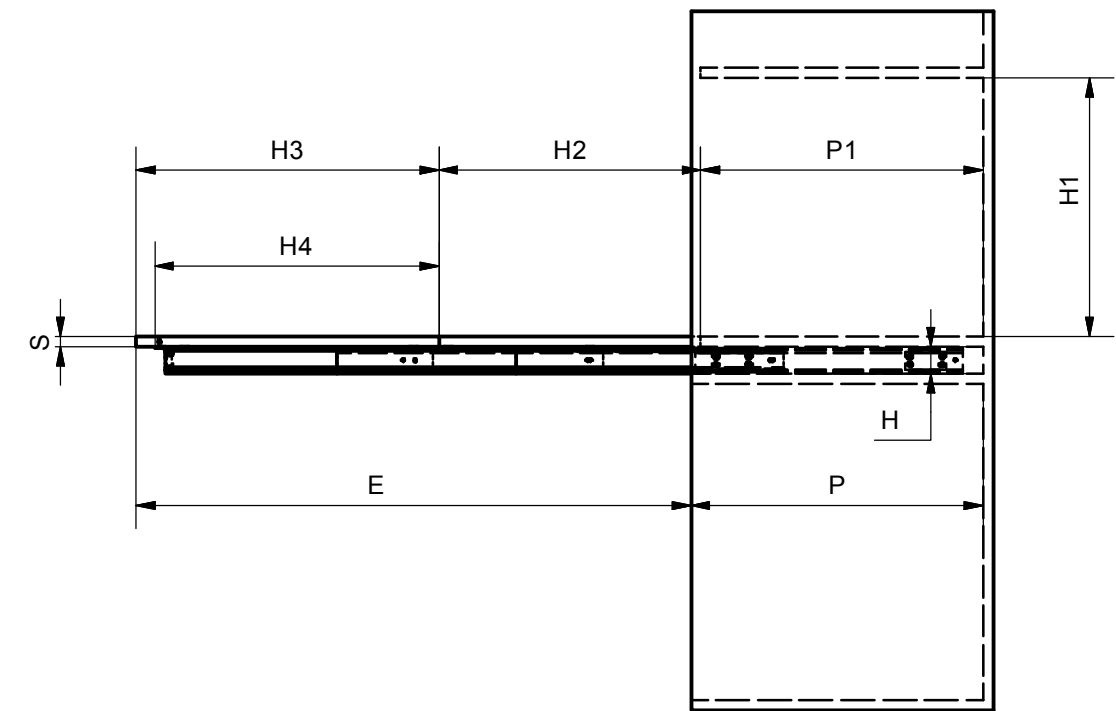
# DIMENSIONI DI MASSIMA GENERAL DIMENSIONS

CODICE - CODE	MODULO - MODULE	L1 MIN/MAX (mm)	L2 (mm)
1-901-050	600	560/570	426
1-901-052	900	860/870	726
1-901-054	1200	1160/1170	1026



# DIMENSIONI GENERALI MOBILE GENERAL CABINET DIMENSIONS

DIMENSIONE - DIMENSION	SIMBOLO - SYMBOL	mm
LUCE VERTICALE - VERTICAL FREE SPACE	H	MIN: 54
PROFONDITA' - DEPTH	P	MIN: 540
PROFONDITA' PIANO - DEPTH TOP	P1	P-S
LARGHEZZA - WIDTH	L	MIN: 560 MAX: 1170
SPESSORE SPALLA - SIDE THICKNESS	S1	15-20
SPESSORE PIANI - TOP THICKNESS	S	MIN: 16
LARGHEZZA PIANO 1 - TOP WIDTH 1	Z	L-5
LARGHEZZA PIANO 2 - TOP WIDTH 2	Z1	Z+(S1-4)
APERTURA PIANO - TOP OPENING	E	1100
ALTEZZA VANO - SPACE HEIGHT	H1	MAX: H2
ALTEZZA PIANO 1 - TOP HEIGHT 1	H2	MAX: 520
ALTEZZA PIANO 1 - TOP HEIGHT 1	H3	MIN: H2+80
POSIZIONE CERNIERA - HINGE POSITION	H4	H2+44



# POSIZIONE FORI FISSAGGIO MECCANISMO

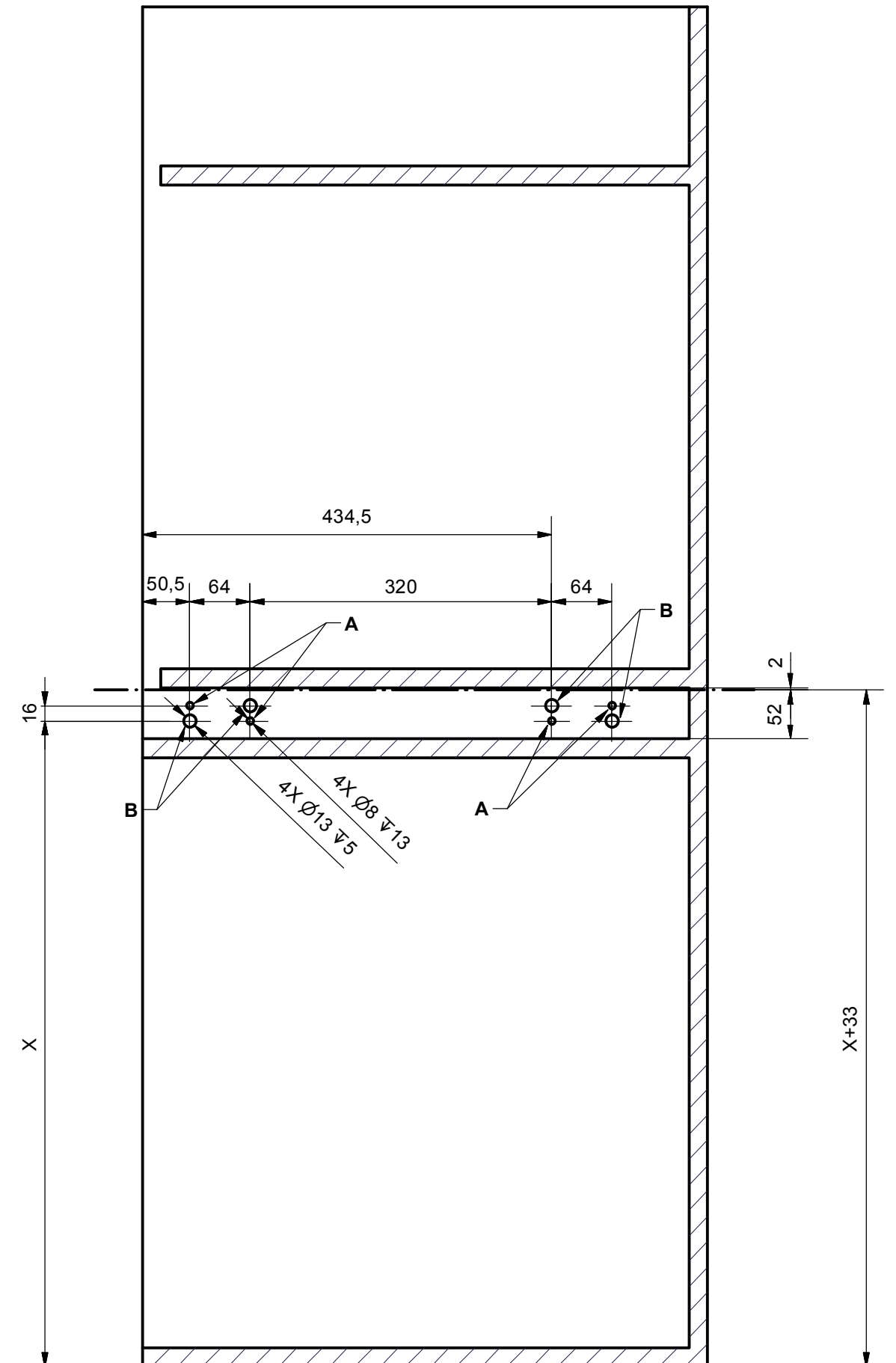
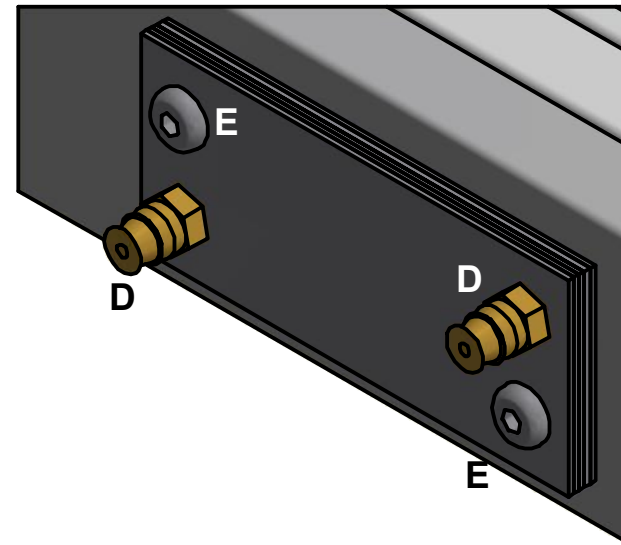
## HOLES FOR MECHANISM POSITION





A: Posizione fori diam. 8x13 per bussole M6  
*Position of diam. 8x13 holes for M6 bushes*

B: Posizione scarichi da Ø10x5 per testa viti fissaggio distanziali  
*Position of Ø10x5 holes for the heads of screws fixing the spacers*

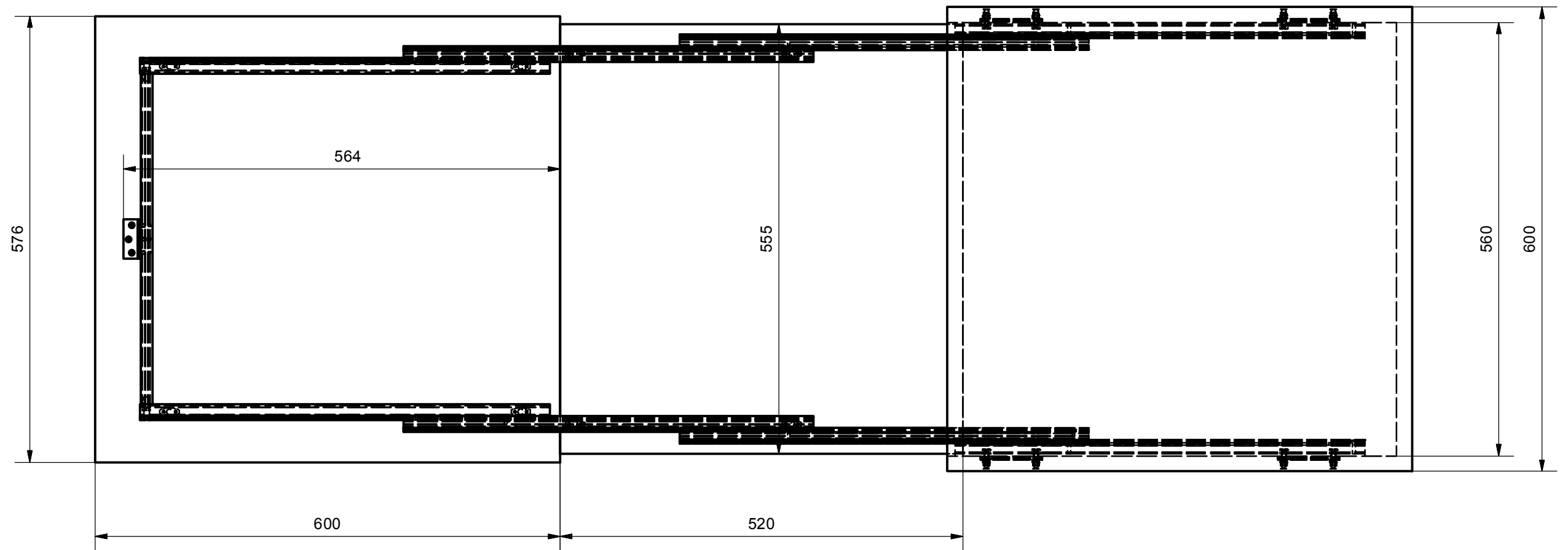
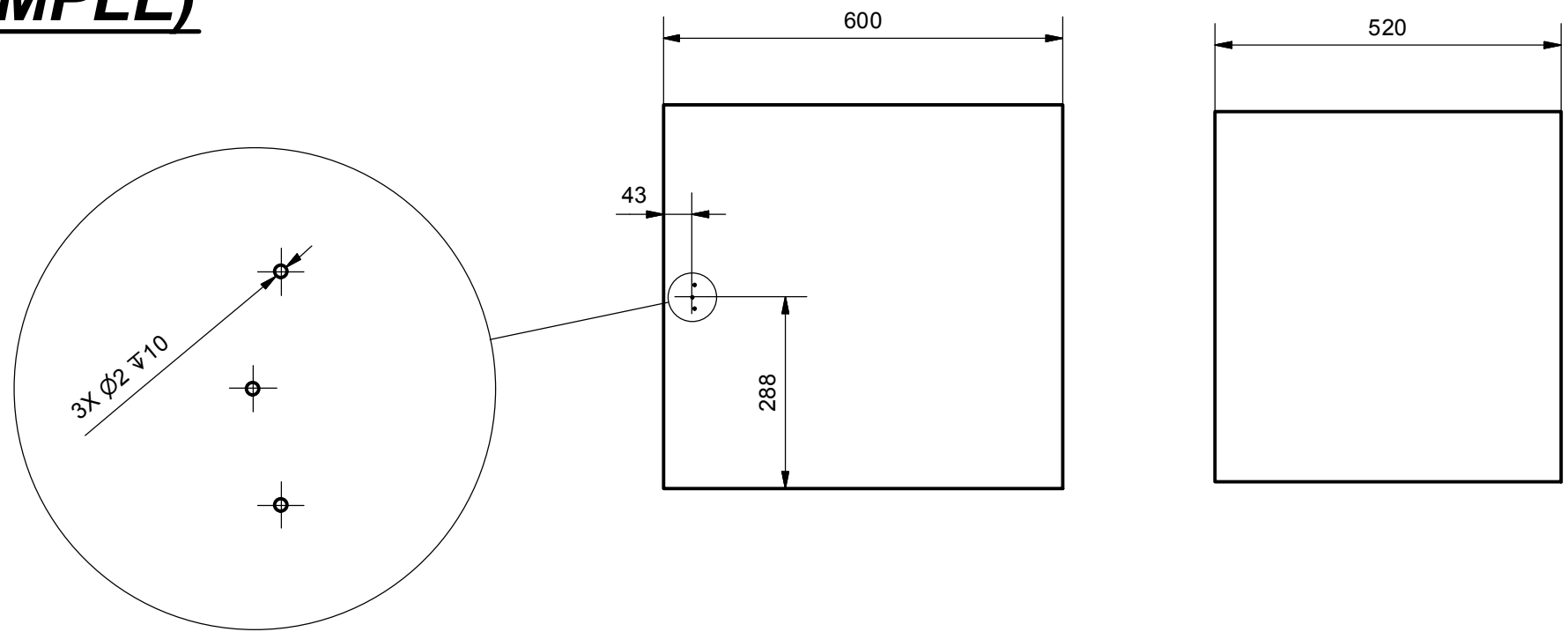
*For cabinet sides <20 mm use included steel spacers fixing them on the external slides*

*Side thickness 20 mm - no spacer*  
*Side thickness 19 mm - 1 spacer*  
*Side thickness 18 mm - 2 spacers*  
*Side thickness 17 mm - 3 spacers*  
*Side thickness 16 mm - 4 spacers*  
*Side thickness 15 mm - 5 spacers*



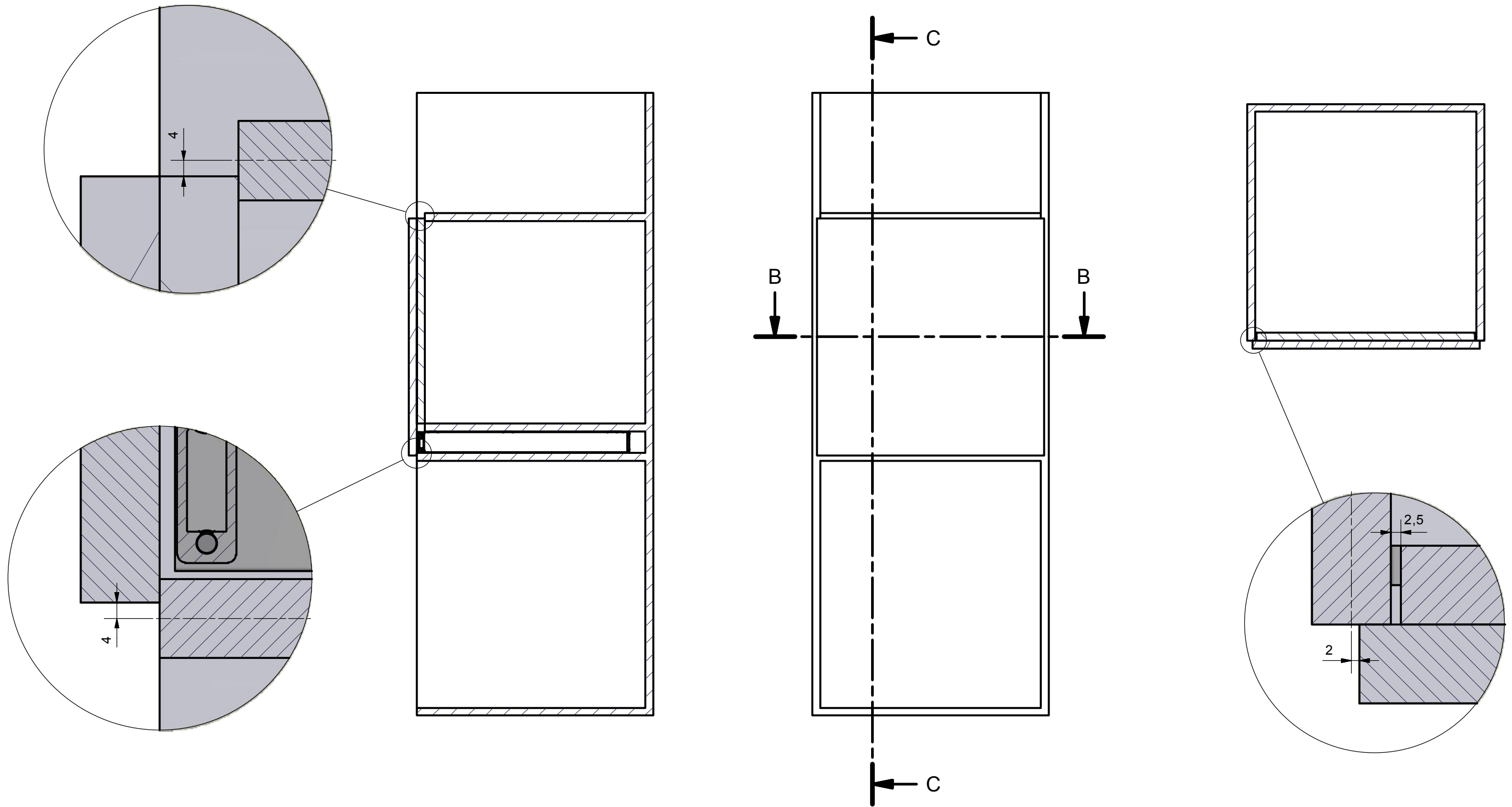
-  A. Chiave esa. n.3 - n.3 Allen key
-  C. Distanziale per spalla - Side spacer (x 20)
-  D. Bussola in ottone M6 12x8 mm - M6 12x8 mm brass bush (x 8)
-  E. Vite TCBCE M5x10 ISO 7380 - M5x10 ISO 7380 screw (x 8)

**DIMENSIONI PIANETTI (ESEMPIO)**  
**PLANES DIMENSIONS (EXAMPLE)**



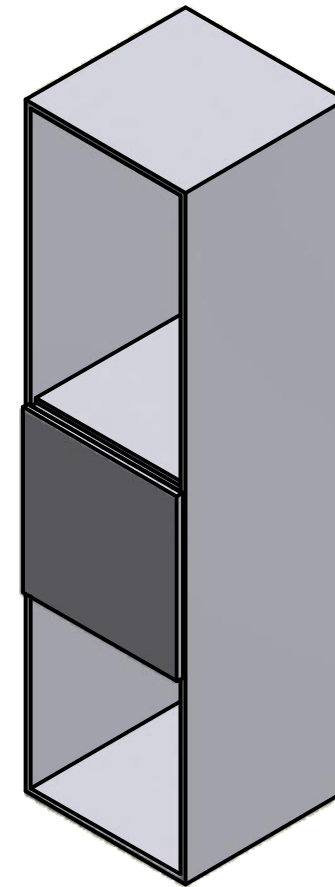
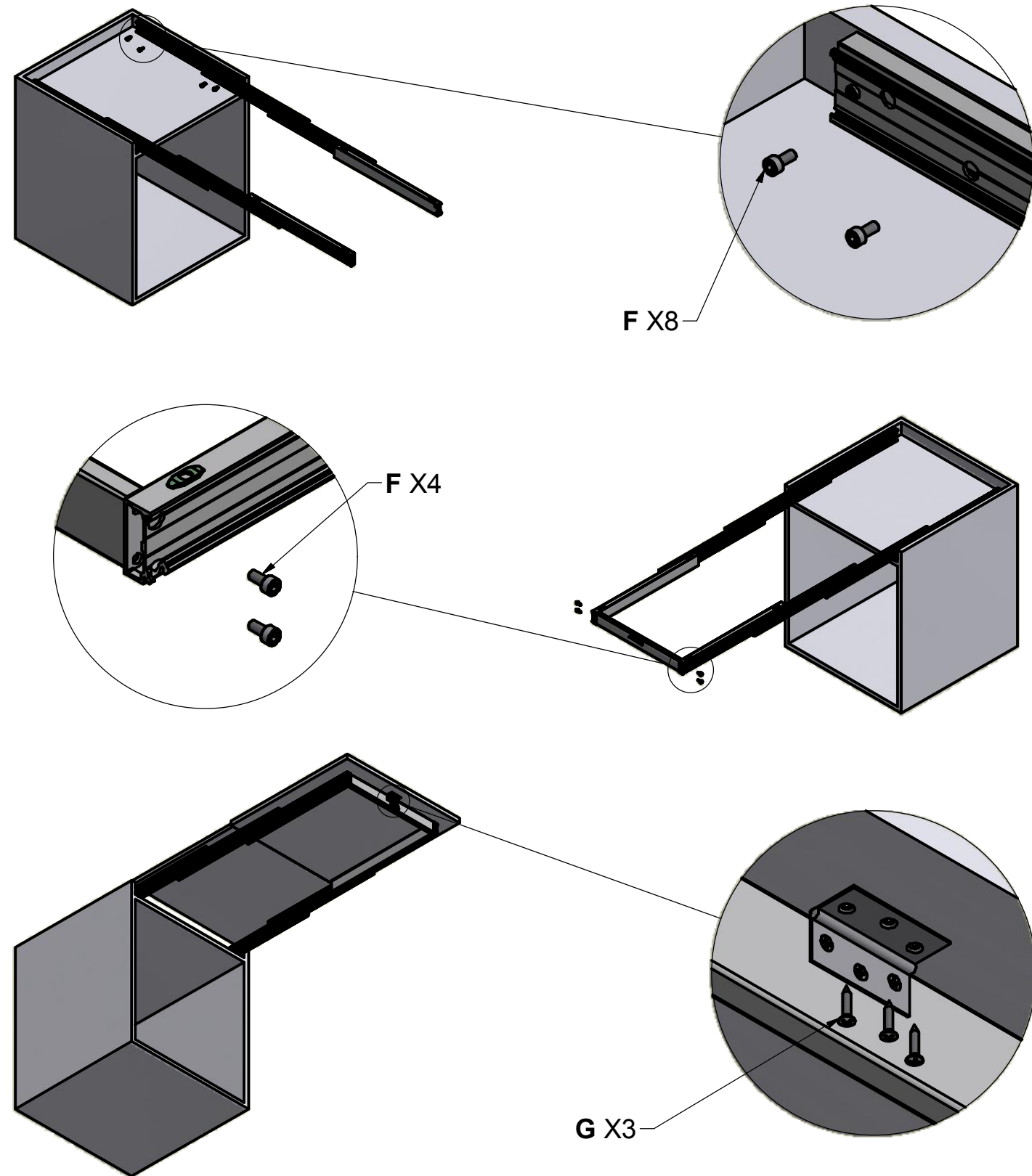
VISTA DAL BASSO - *BOTTOM VIEW*

**DIMENSIONI GENERALI MOBILE CHIUSO**  
**GENERAL CABINET DIMENSIONS CLOSED**

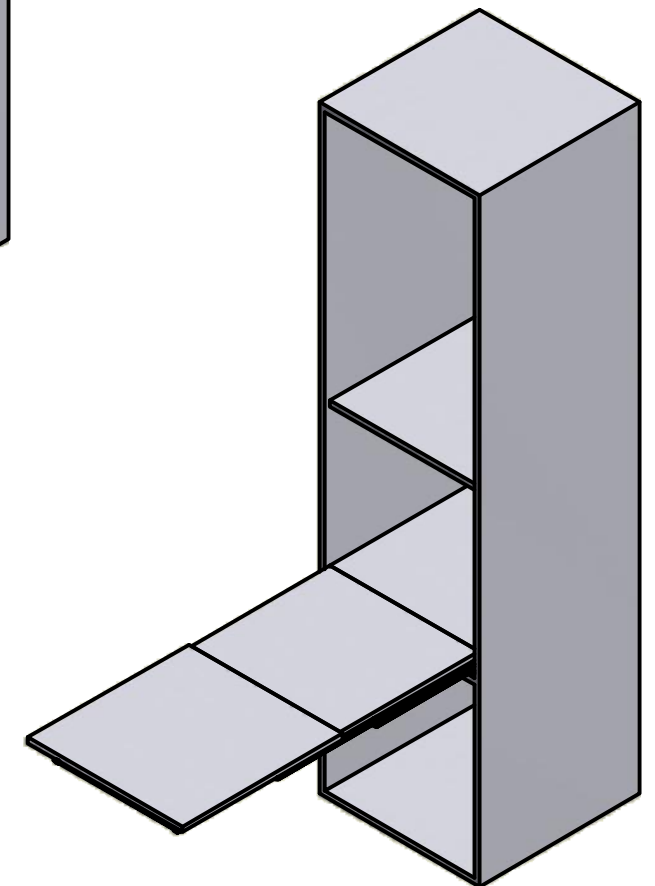


# MONTAGGIO DEL MECCANISMO MOUNTING OF THE MECHANISM

# SEQUENZA DI FUNZIONAMENTO FUNCTIONING SEQUENCE



CHIUSO  
CLOSED



APERTO  
OPENED

- B. Chiave esa. n.5 - n° 5 Allen key
- F. Vite TCCE M6x12 - M6x12 socked head cap screw (x 12)
- G. Vite truciolare 3.5x16 - 3.5x16 chipboard screw (x3)