

# LAMP® FOLDING POCKET DOOR SYSTEM ALT-F Installation Manual

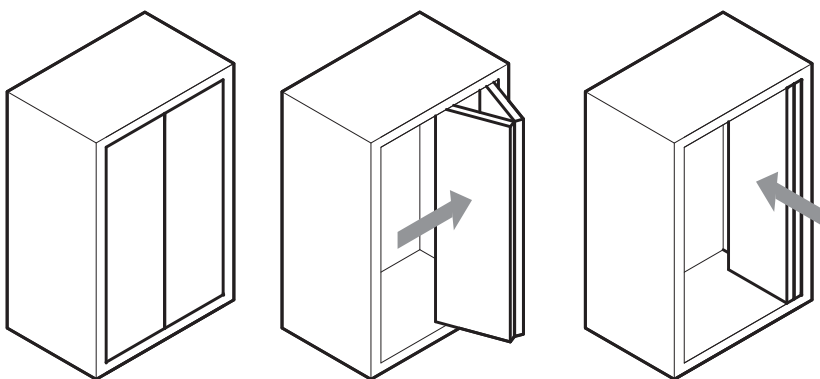
Thank you for selecting our product. Before starting installation, please read this manual thoroughly to ensure correct installation.

Please keep this manual at hand for future reference.

## ABOUT THE PRODUCT

Pocket door hardware for folding door system.

The folding door can be stored inside the shallow cabinet.



## SPECIFICATIONS

	2 Rails Type	3 Rails Type
Max. door width	450 mm / door	
Max. door height	1830 mm	1831 - 2400 mm
Door thickness	23 - 30 mm	
Max. door weight	10 kg / door	

## FOR YOUR SAFE WORK AND CORRECT INSTALLATION

	This symbol denotes prohibited action.
	This symbol denotes what must be done.

**WARNING:** If these warnings are not followed, it may result in death or serious injury.

- ⚠ It is necessary to manufacture the cabinet with sufficient strength so it endures the weight of the door and impact shocks upon opening/closing the door. Also make sure to only use the designated screws and to fasten them firmly. A cabinet with poor strength or loose screws might result the door to be dropped down and cause injury.
- ⊘ Do not try to use this product for any other purposes other than originally intended for. Do not use the parts for applications that are out of specification.
- ⊘ Do not disassemble nor modify any parts than those described in this document.

**CAUTION:** If these cautions are not followed, it may result in injury or damage.

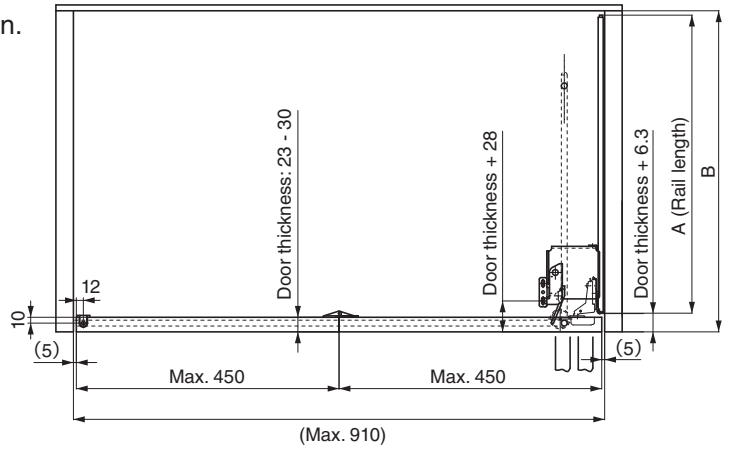
- ⚠ This (sliding door system) should be installed by an experienced person who has correct knowledge. If the system is not installed correctly, the door will not operate smoothly, and or may cause injury.
- ⚠ This (sliding door system) is a part for furniture fittings. After installation, make sure to test the finished product thoroughly to ensure that it is well-functioning and safe.
- ⚠ Make sure to follow the designated measurements and specifications as well as horizontal and verticals angles. Make sure that the cabinet is not warped, since it may affect the movement of the door.
- ⚠ If cutting any parts, make sure to remove any burr before installation. Also check the upper rail for any left-over burr or scrap and remove these.
- ⚠ Make sure to test the screws for slack at regular intervals (one month from first usage, half year and then one time every year is recommended).



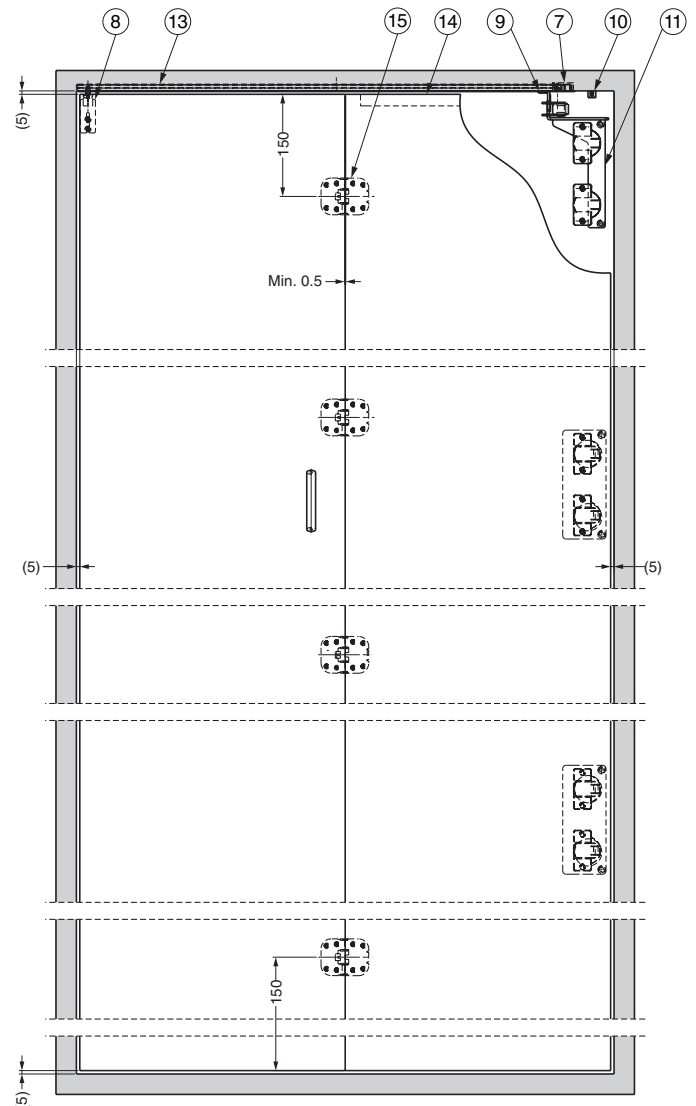
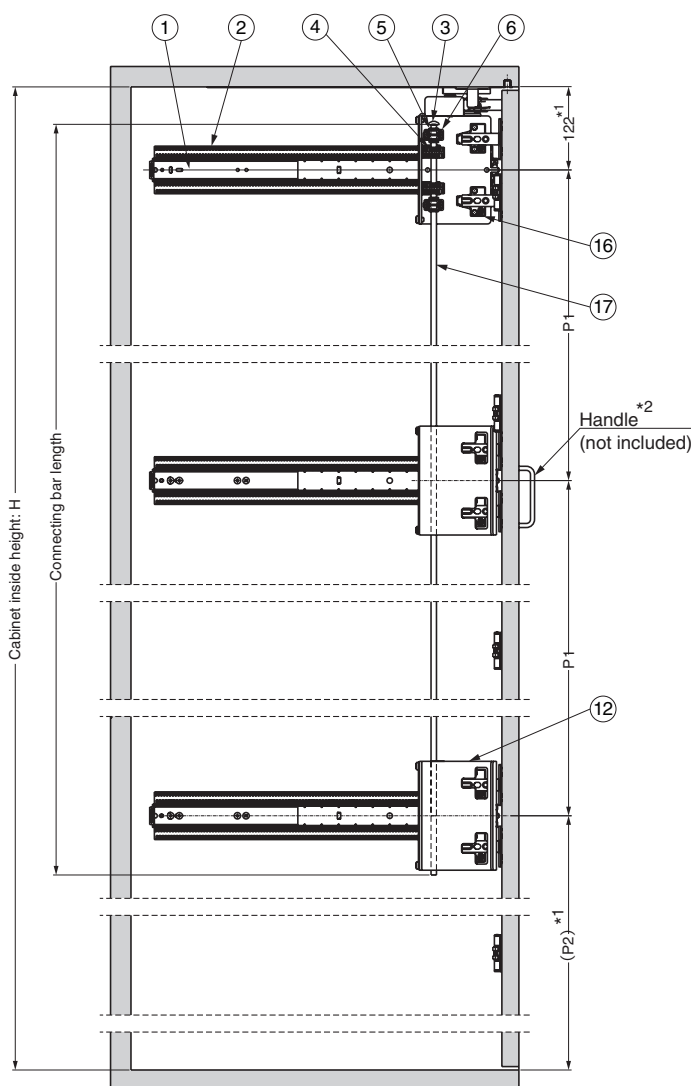
# INSTALLATION DRAWINGS

The procedure describes the right handed opening type.  
The left-handed opening is installed in the opposite position.

Item Name	Opening direction	Rail Length (A)	Door Storing	Cabinet Depth (B)
ALT-F18L	Left	460.4	355.6	Min. 466.7 + Door thickness
ALT-F18R	Right			
ALT-F20L	Left	511.2	406.4	Min. 517.5 + Door thickness
ALT-F20R	Right			



Installation Drawing (3 Rails Type)



**\*1 Position of rails**

The dimension of the design is 125, but take into consideration that the door may sag when installing the door.

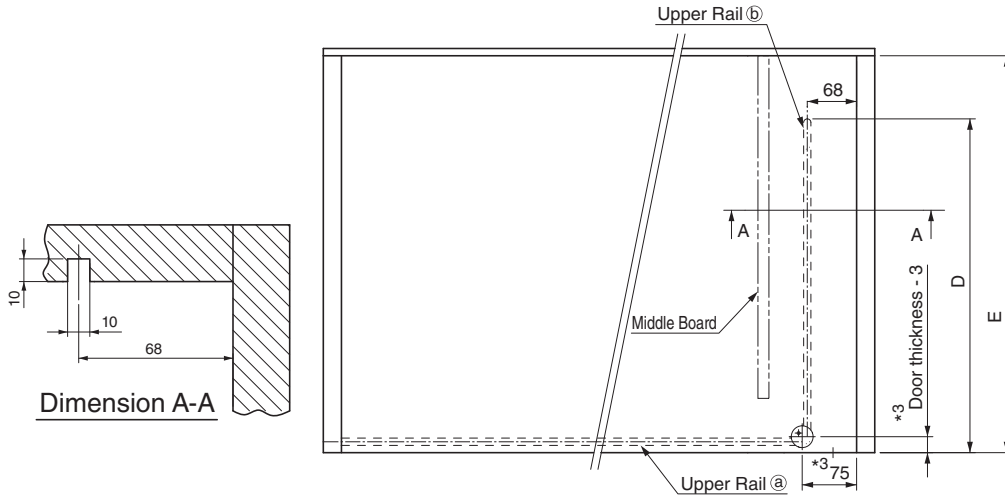
**\*2 Position of handle**

See page 4 when placing a middle board.

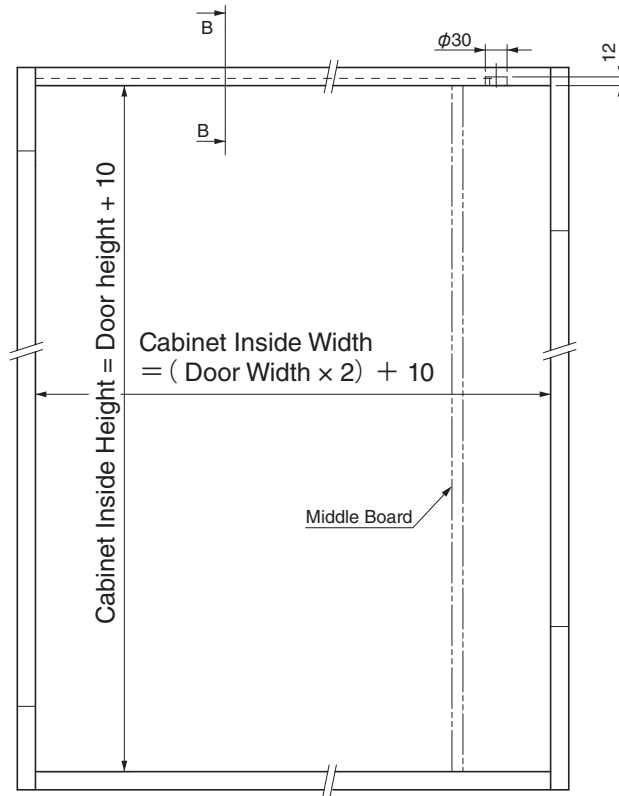
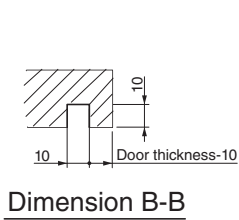
	2 Rails Type	3 Rails Type	
Door Height	Max. 1830	1831 - 1903	1904 - 2400
Cabinet Inside Height: H	Max. 1840	1841 - 1913	1914 - 2410
Connecting Bar Length	H-110		1803
P1	H-250	(H-250)/2	831
(P2)	128		H-1784

# CABINET DIMENSION

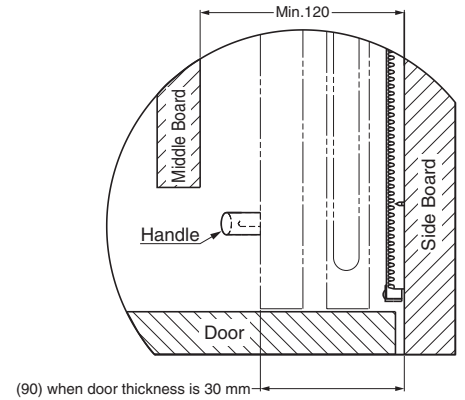
Use hardwood for core material for parts fitting area.



\*3: Position (center) of  $\phi 30$  hole



When installing middle board  
Position middle board to avoid  
interference with handle and angle  
stopper.



Length of Upper Rail ⑬

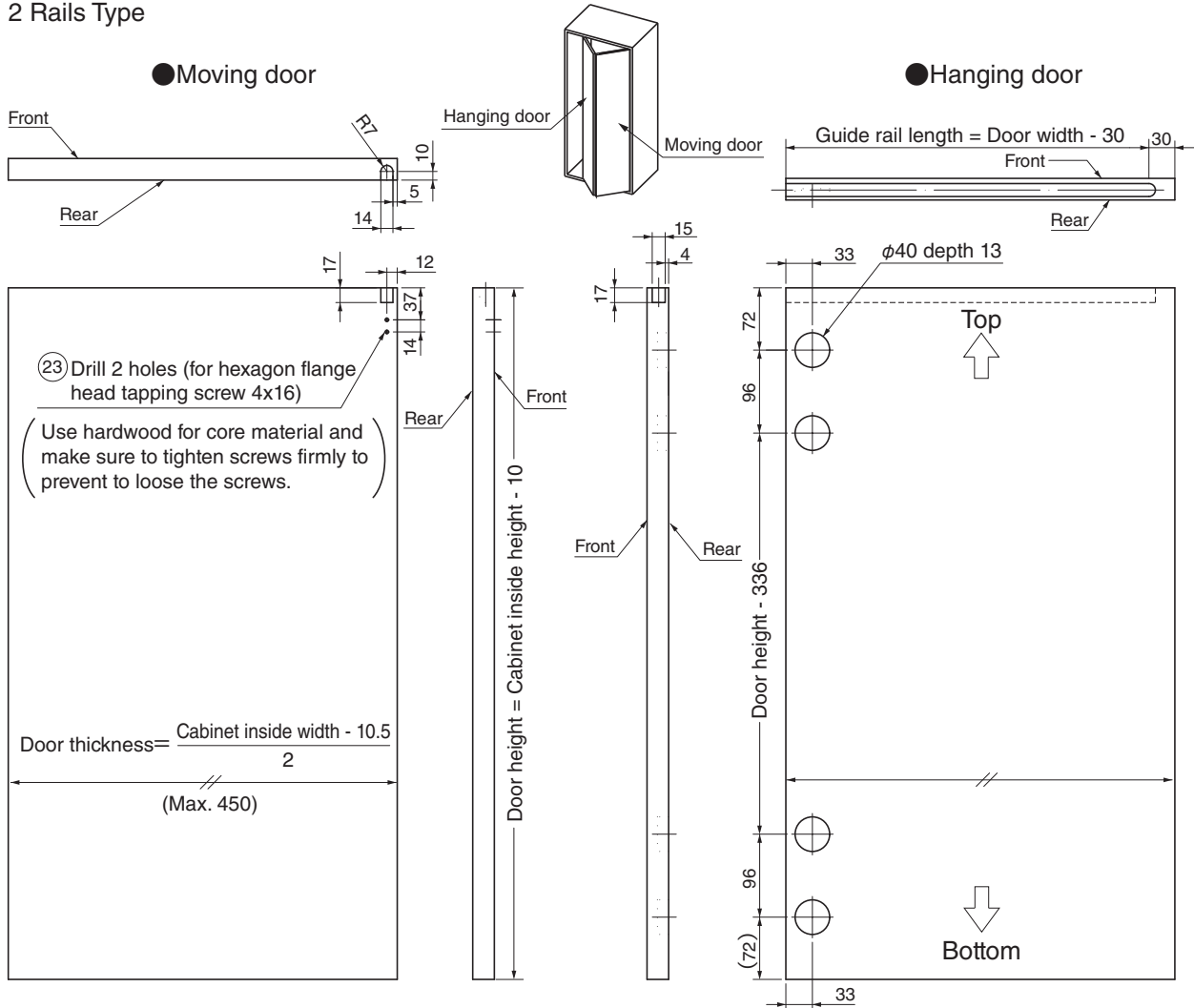
	Rail (a)	Rail (b)	D	E
ALF-F18(L/R)	Door Width x 2 - 69	375	410	Min. 466.7 + Door thickness
ALF-F20(L/R)		425	460	Min. 517.5 + Door thickness

Please drill a new hole within 50 mm from the end of upper rail after cutting the rail.  
Do not deform when the rail is cut.  
Deburr the cut surfaces.

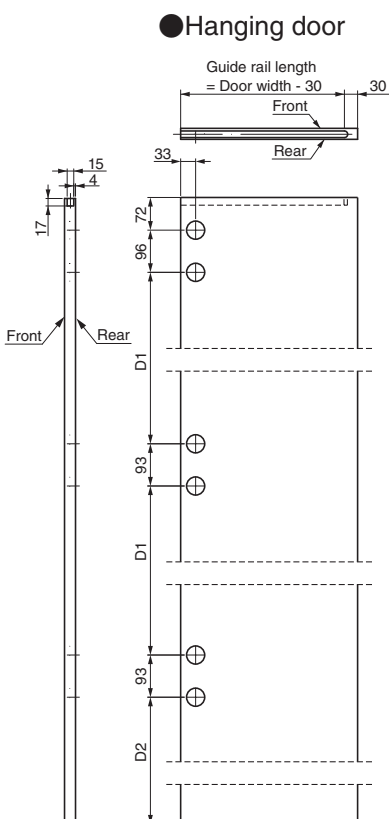
# DOOR DIMENSION

Use hardwood for core material for parts fixing area.

## [1] 2 Rails Type



## [2] 3 Rails Type



**● Moving door is the same as 2 rails type**

\*4 Please drill a new hole within 50 mm from the end of rail after cutting the rail.

Do not deform when the rail is cut.

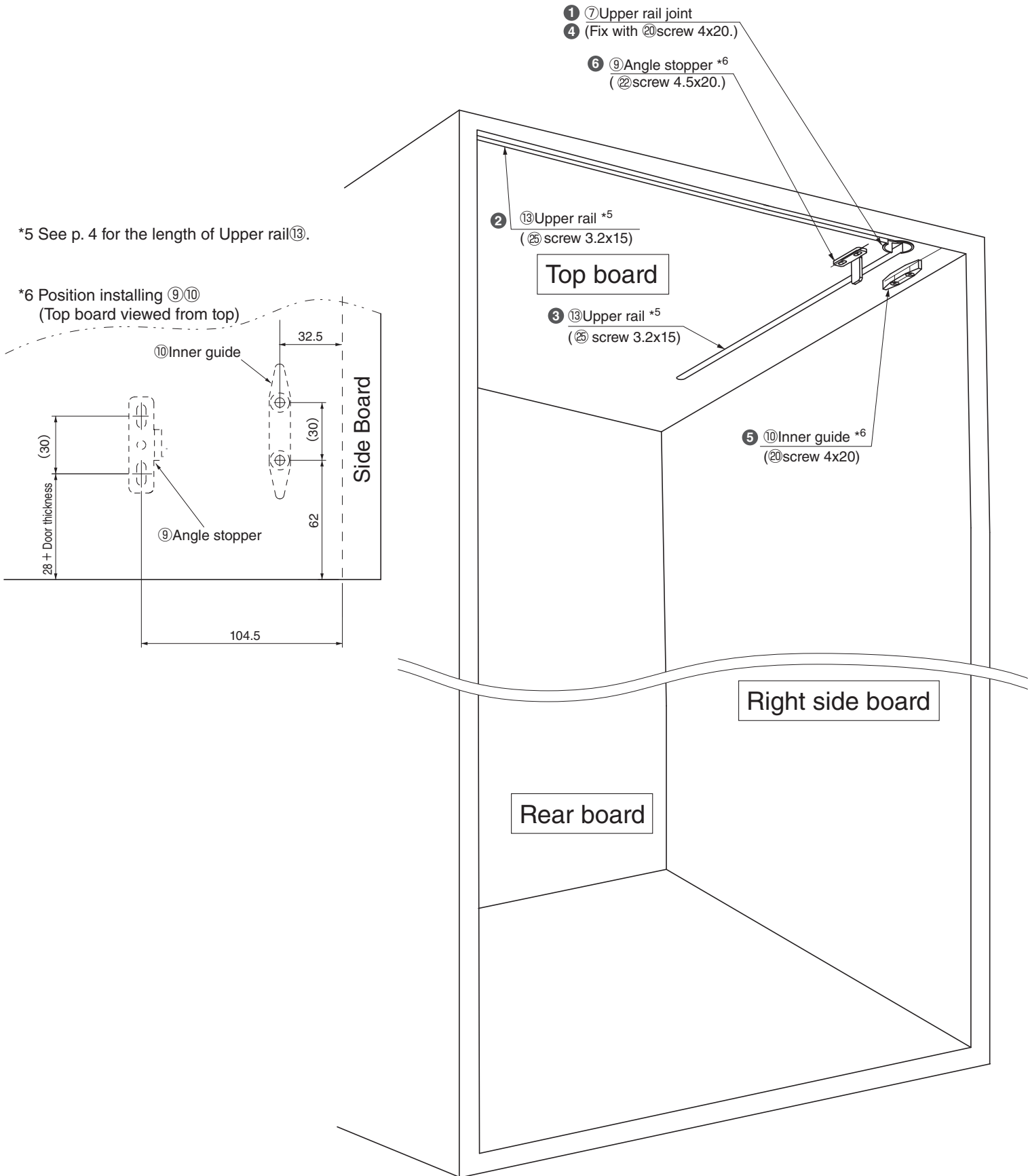
Deburr the cut surfaces.

Door height	1831 - 1903	1904 - 2400
Cabinet inside height: H	1841 - 1913	1914 - 2410
D1	Door height / 2 - 216	735
(D2)	(120)	Door height - 1830

# INSTALLATION PROCEDURES

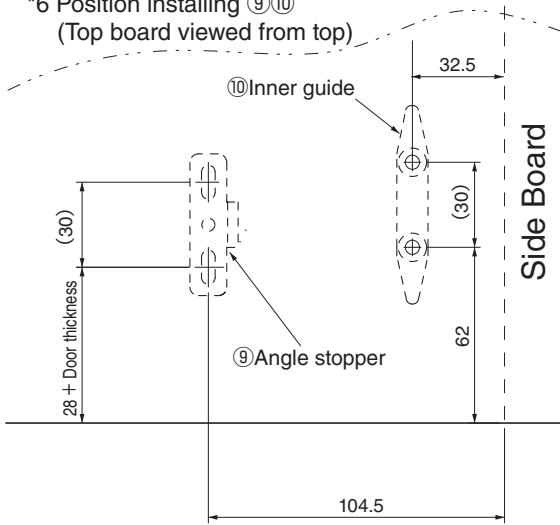
## 1 Installing Parts on the Top Board

Install parts in order of ① to ⑥.



\*5 See p. 4 for the length of Upper rail ⑬.

\*6 Position installing ⑨ ⑩  
(Top board viewed from top)



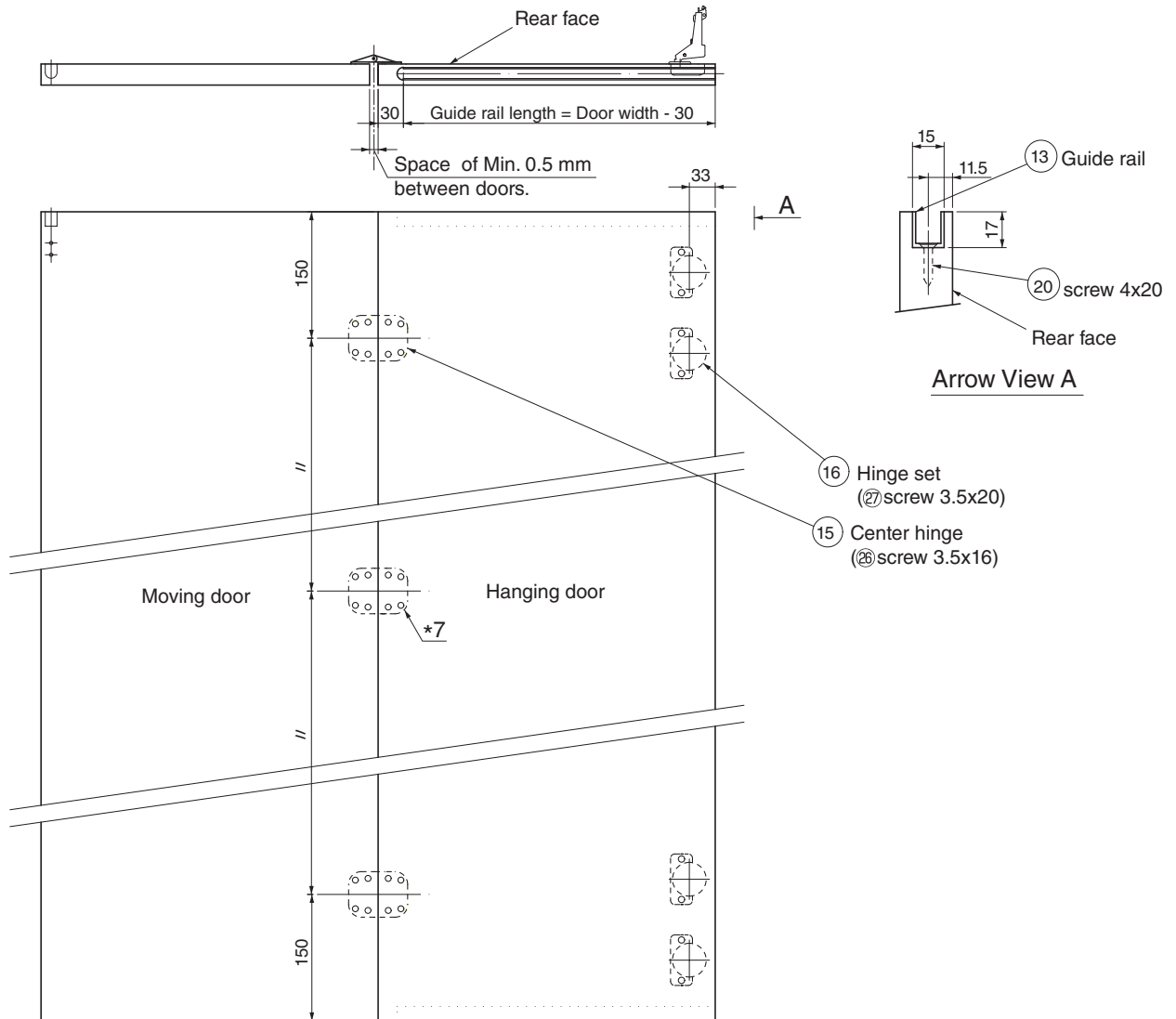
## 2 Installing Parts

- (1) Fix hinge set ⑯ into the hanging door.
- (2) Fix guide rail ⑭ into grooves in the upper blocks in hanging door.
- (3) Fix center hinge ⑮.

2 rails type : Fix as show in the below drawing.

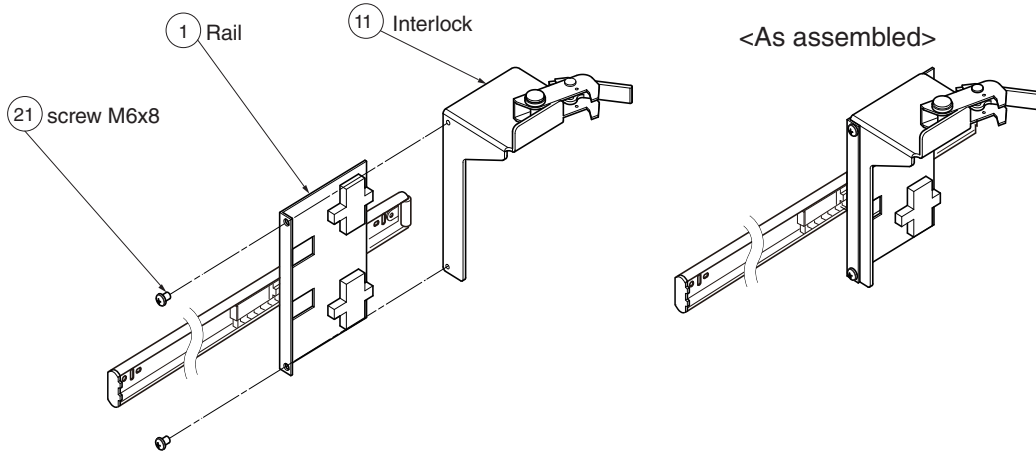
3 rails type : Fix 2 center hinges within 150 mm from the end.

\*7 Another 2 hinges should be mounted in even distance each other.



### 3 Assembling Interlock to Rail

Assemble interlock (11) to rail (1) with screw (21).

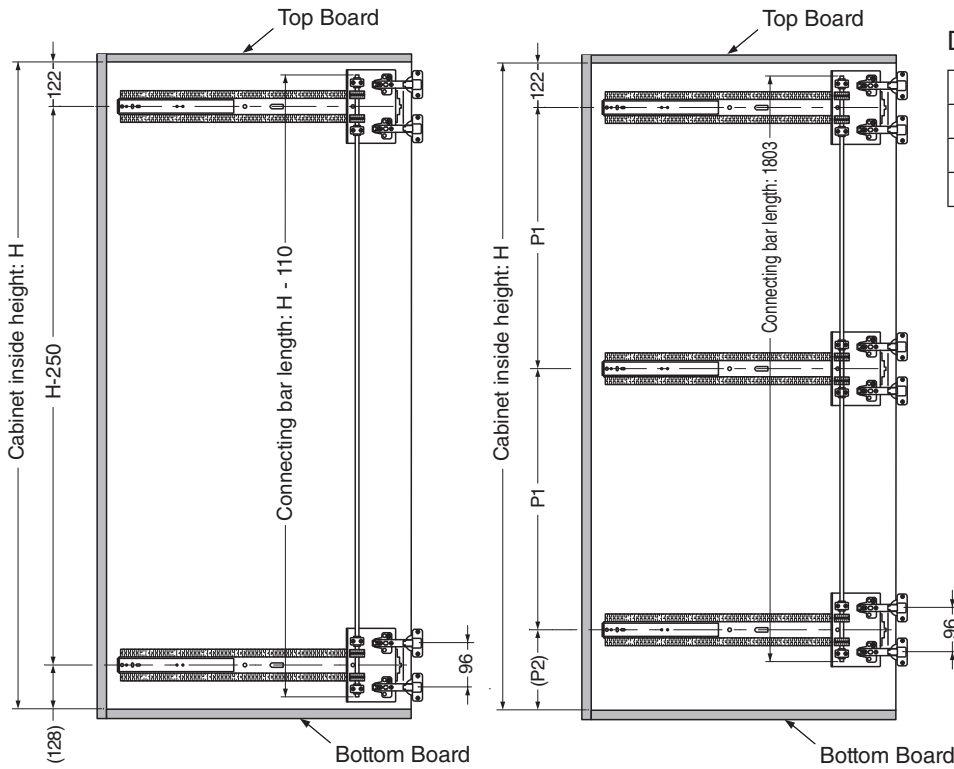


### 4 Installing Rails and Racks

#### 1 Positions for rails

##### [1] 2 Rails Type

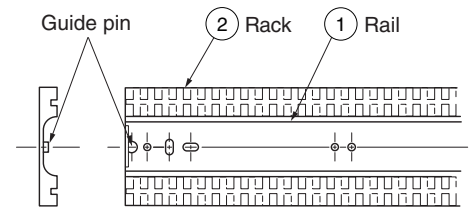
##### [2] 3 Rails Model



#### Dimensions for 3 rails model

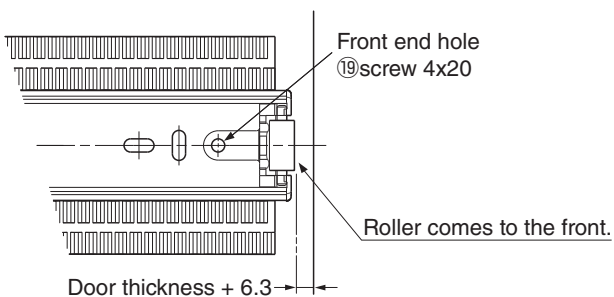
Door height	1831 - 1903	1904 - 2400
Cabinet inside height: H	1841 - 1913	1914 - 2410
P1	$(H-250)/2$	831
(P2)	128	H-1784

#### 2 Fit rail to the rack.



#### 3 Fixing Rails

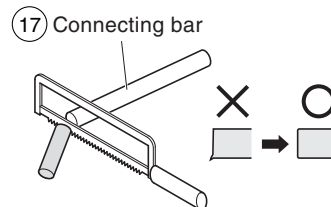
Fix rails in order to be parallel each other.



#### 4 Cutting of connecting bar

Cut connecting bar (17) as in above drawings.

**CAUTION**  
Deburr the cut surfaces of the shaft completely.



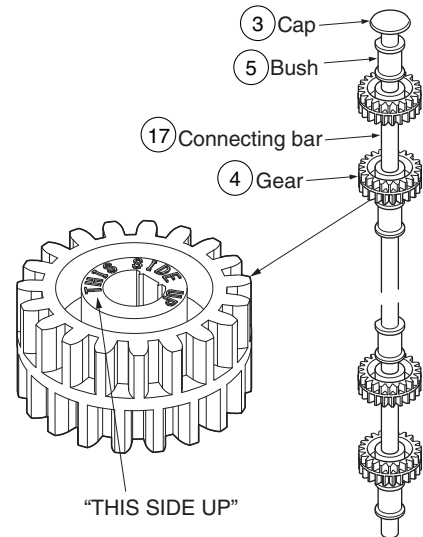


## 5 Assembling Connecting Bar and Gear

Assemble gear, connecting bar, bush, and cap as shown in the drawing.

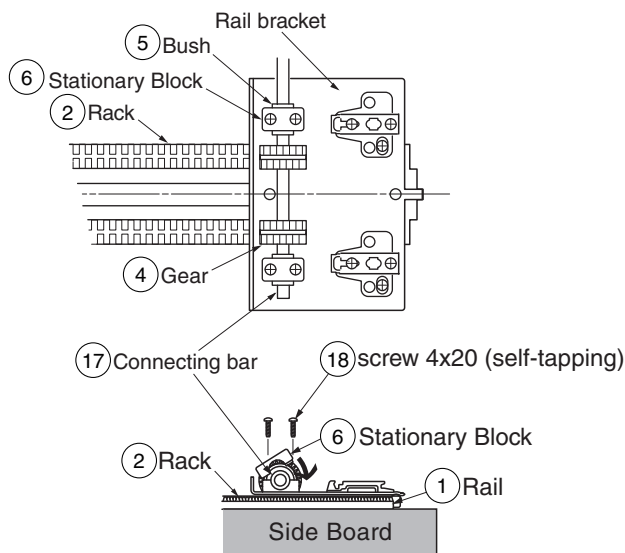
### CAUTION

Make sure to check the direction of gear.  
Be sure to push the cap into pinion shaft strongly.

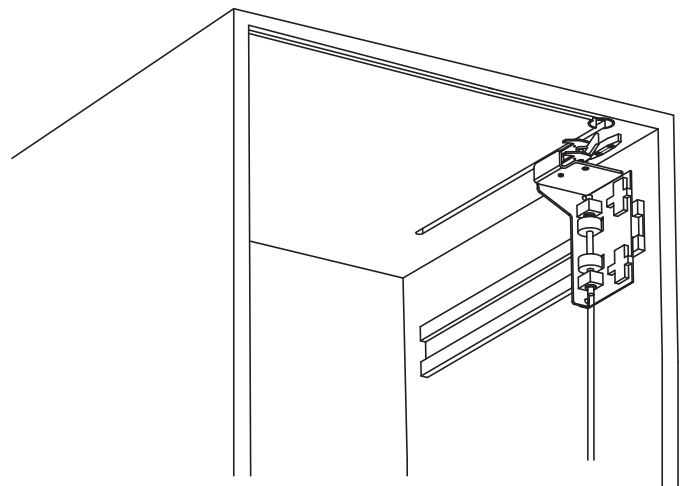


## 6 Assembling Gear into Rail

- (1) Pull the rail bracket until the end of the rail.
- (2) Engage the rack and gear of connecting shaft. Fix the stationary block as in below drawing.



<Shaft mounted on the rail>



## 7 Hanging Doors

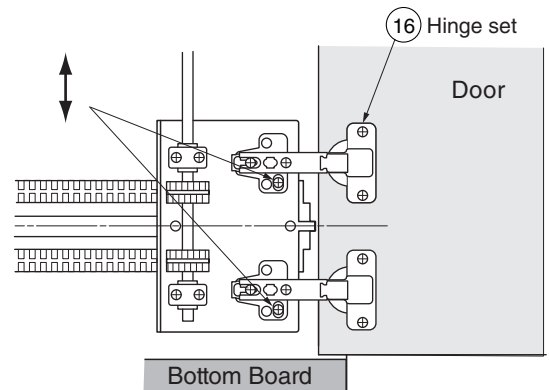
! The work of hanging the doors must always be carried out by a team of two workers.

Install the door to mount the hinge set onto mounting plates.

See 9 for door adjustment instructions.

### CAUTION

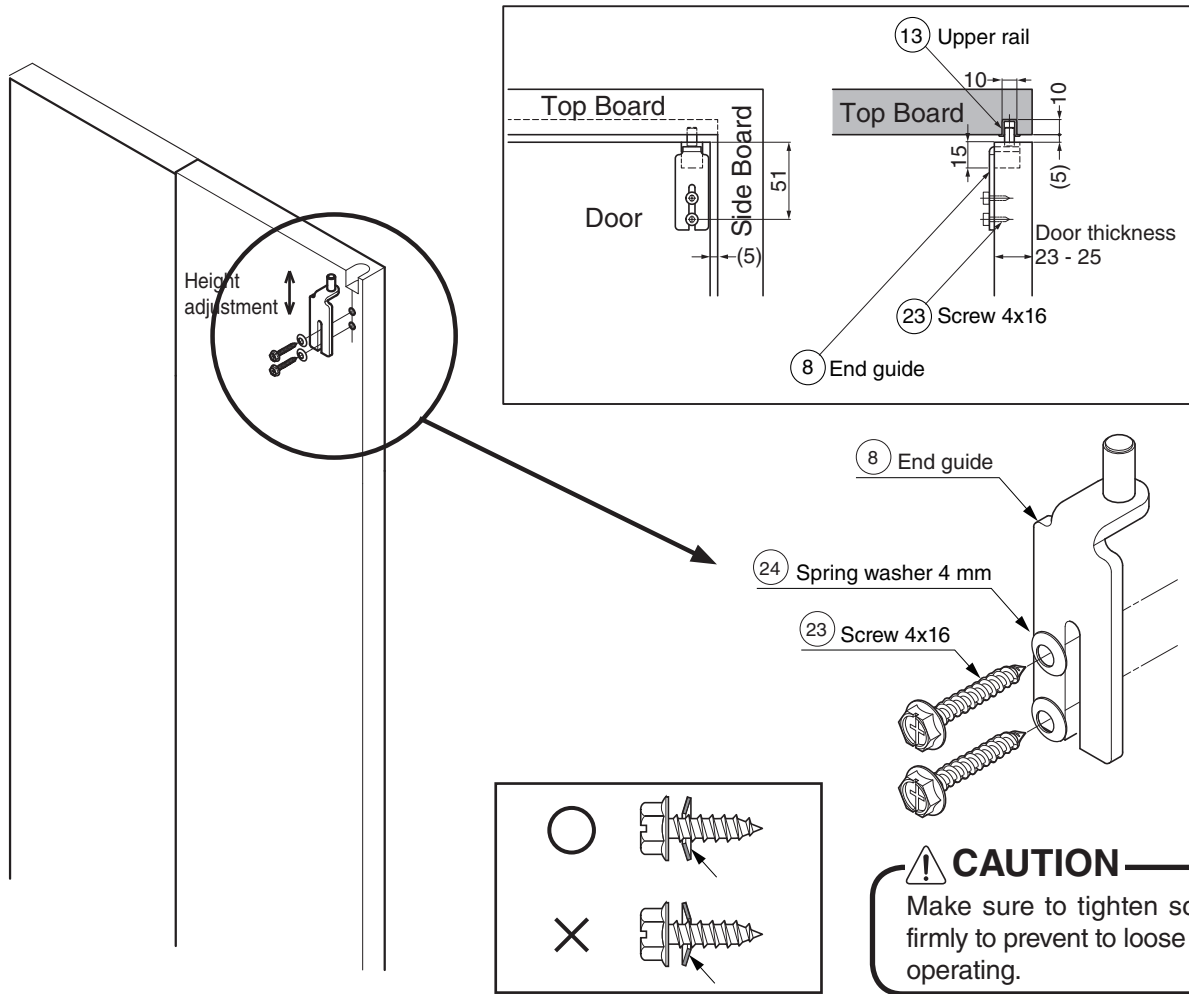
Make sure to tighten adjustment screws firmly to fix.



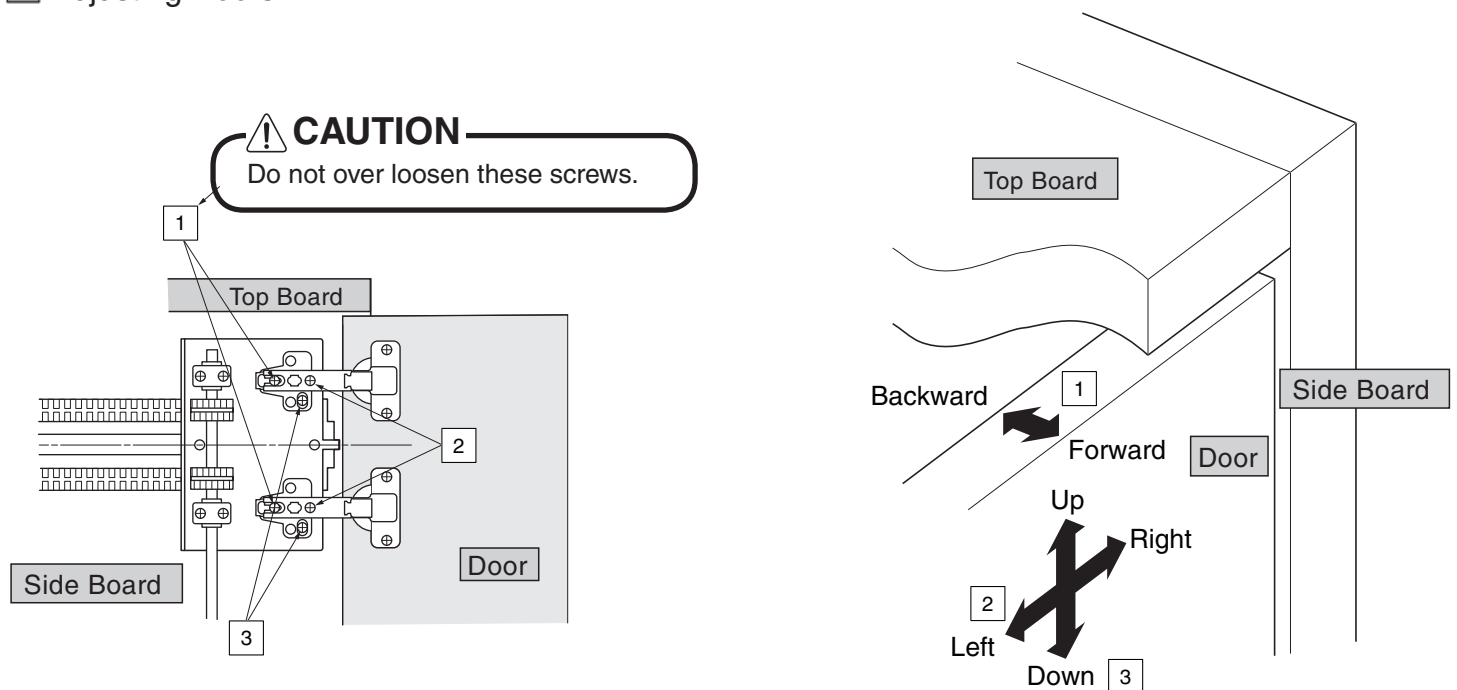
Height adjustment

## 8 Installing End Guide

Insert the end guide ⑧ into upper rail ⑬ and fix with ⑲ and ⑳ after height adjustment.



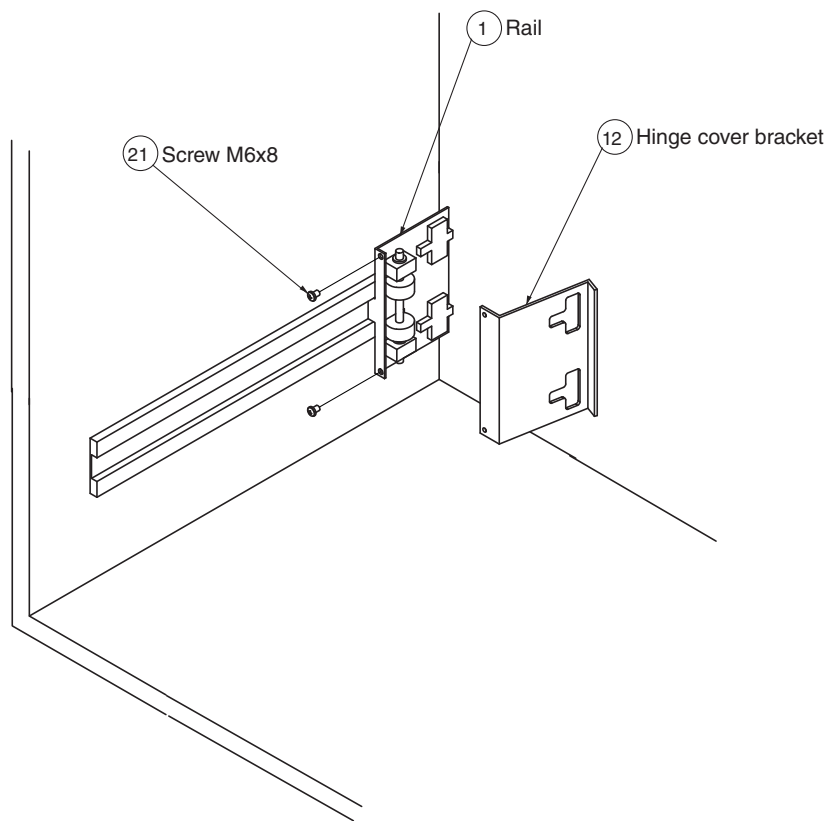
## 9 Adjusting Doors



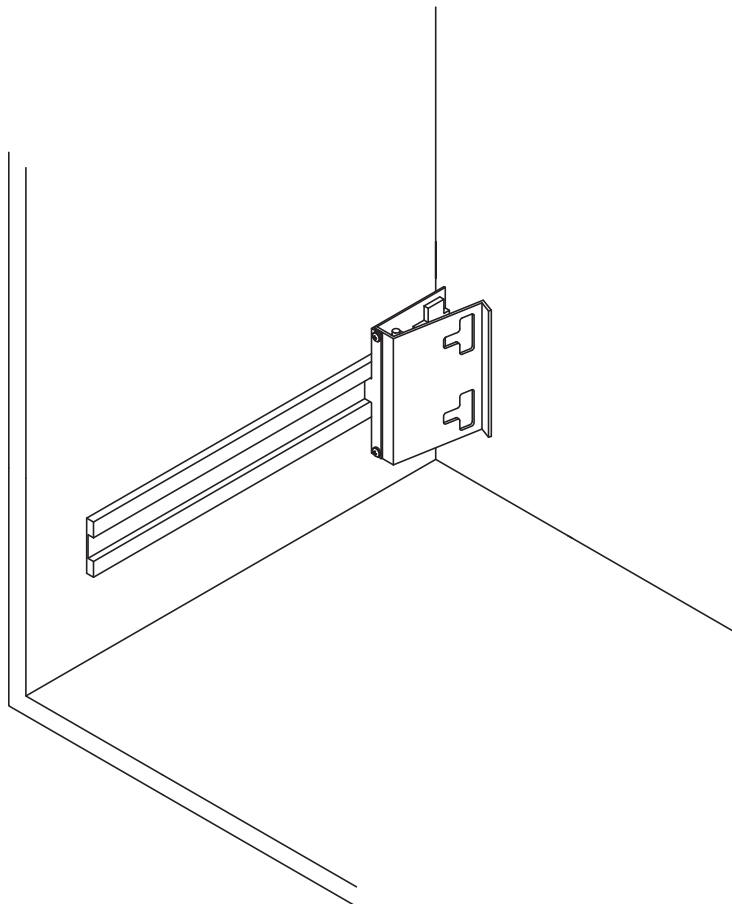
## 10 Assembling Hinge Cover Bracket

Assemble hinge cover bracket ⑫ to rail ①.

(As for 3 slides model, assemble it to middle rail, too.)



<Hinge cover bracket as assembled>



---

**SUGATSUNE KOGYO CO.,LTD.**

Phone: +81 3 3866 2260

F a x : +81 3 3866 4447

E-mail: [export@sugatsune.co.jp](mailto:export@sugatsune.co.jp)Website: [www.sugatsune-intl.com](http://www.sugatsune-intl.com)**SUGATSUNE KOGYO (UK) LTD.**

Phone: +44 118 9272 955

F a x : +44 118 9272 871

E-mail: [sales@sugatsune.co.uk](mailto:sales@sugatsune.co.uk)Website: [www.sugatsune.co.uk](http://www.sugatsune.co.uk)**SUGATSUNE AMERICA, INC.**

Phone: +1 310 329 6373

F a x : +1 310 329 0819

E-mail: [sales@sugatsune.com](mailto:sales@sugatsune.com)Website: [www.sugatsune.com](http://www.sugatsune.com)**SUGATSUNE SHANGHAI CO., LTD.**

Phone: +86 21 3632 1858

F a x : +86 21 3632 1868

E-mail: [lamp@sugatsune.com.cn](mailto:lamp@sugatsune.com.cn)Website: [www.sugatsune.com.cn](http://www.sugatsune.com.cn)