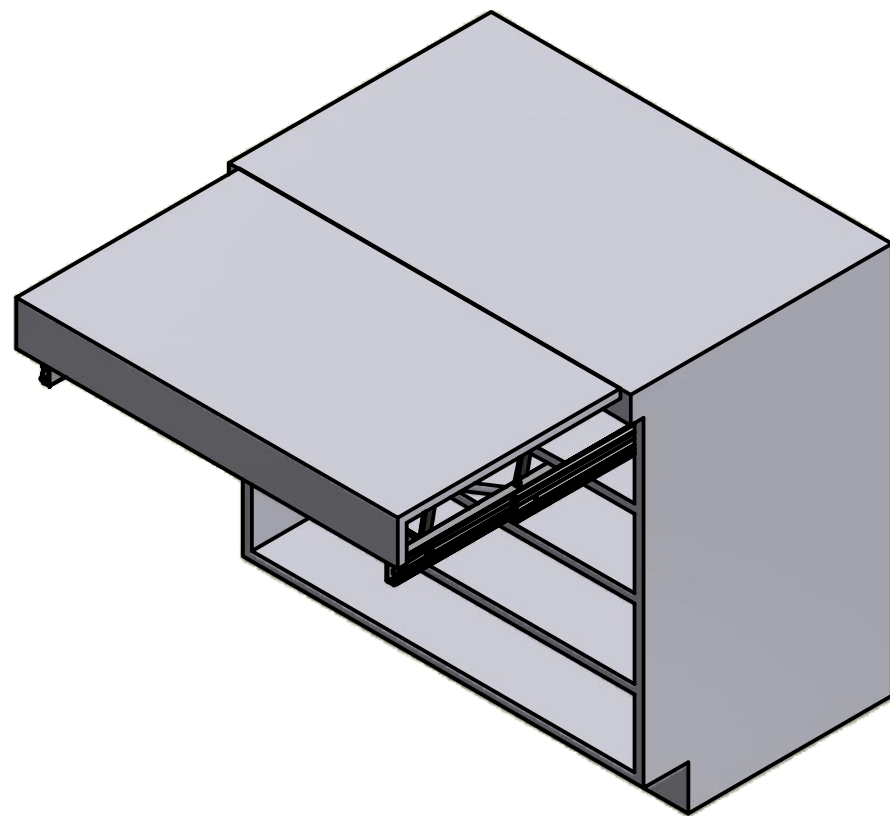


OPLA' TOP

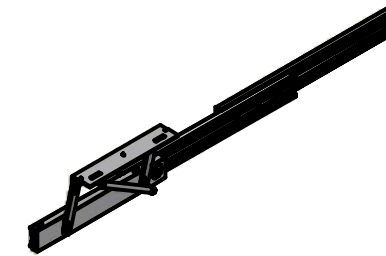
ISTRUZIONI DI MONTAGGIO ASSEMBLY INSTRUCTIONS

MODELLI:
MODELS:

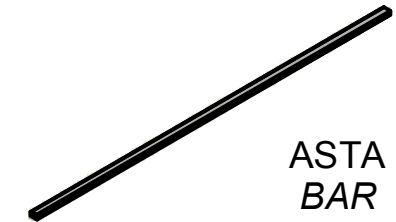
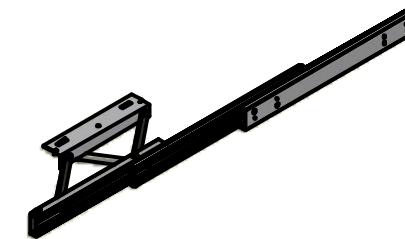
- 1-901-002 Oplà top 600 mm
- 1-901-004 Oplà top 900 mm
- 1-901-006 Oplà top 1200 mm



CONTENUTO DELLA CONFEZIONE INCLUDED IN THE PACKAGING



GUIDE
SLIDES



ASTA
BAR

ACCESSORIES



A. Chiave esa. n.5 - *n.5 Allen key*



B. Chiave esa. n.3 - *n.3 Allen key*



C. Molla - *Spring (x2)*



D. Ammortizzatore - *Dumper (x2)*



E. Bussola M6 12x8 mm - *Bush M6 12x8 mm (x12)*



F. Rondella Ø12x1.35 - *Washer Ø12x1.35 (x4)*



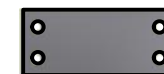
G. Vite TPS M5x12 - *M5x12 tapered screw (x2)*



H. Vite TCCE M6x12 - *Socketed head cap screw M6x12 (x12)*

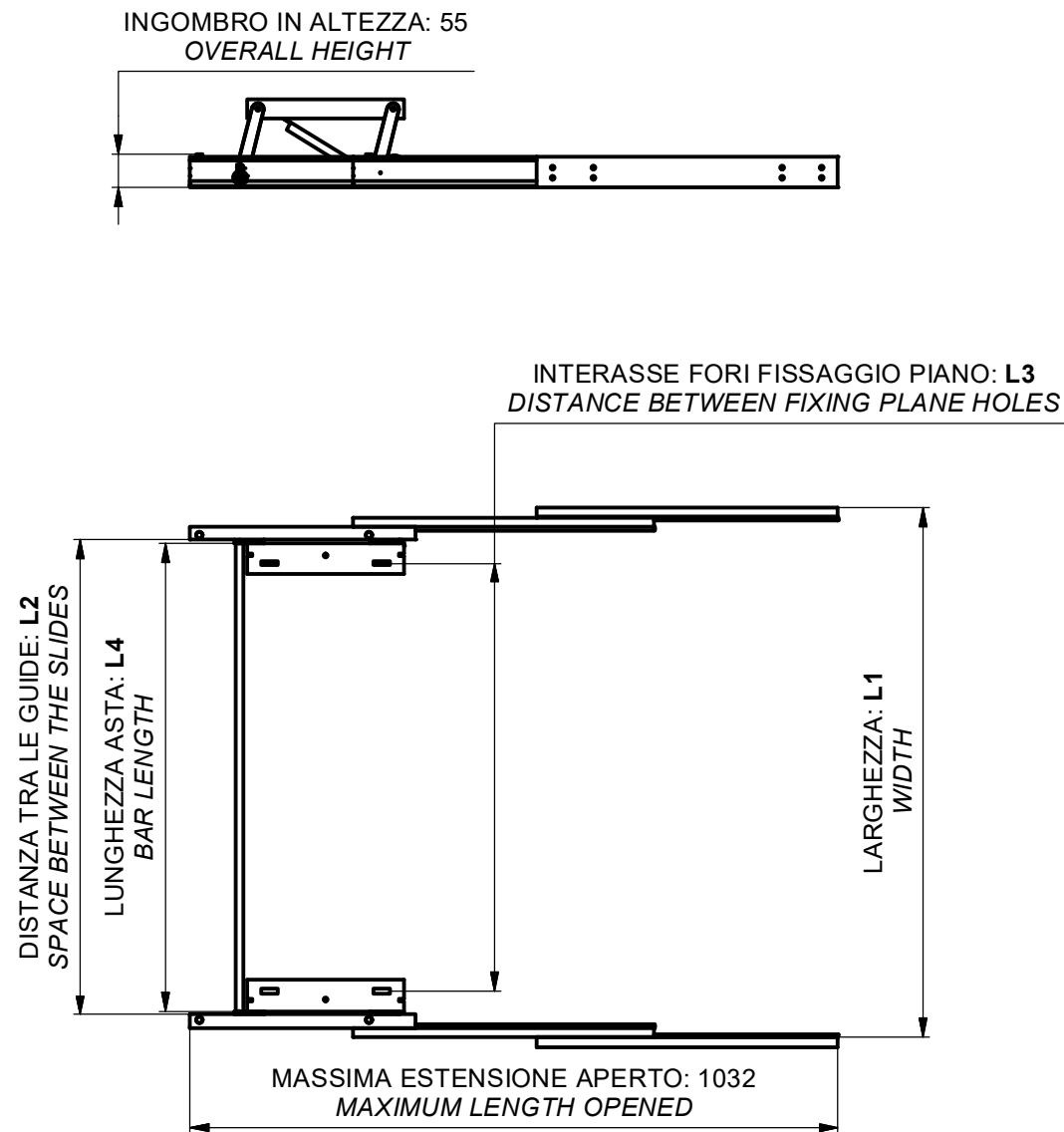


I. Vite TCBCE M5x10 ISO 7380 - *M5x10 ISO 7380 screw (x8)*



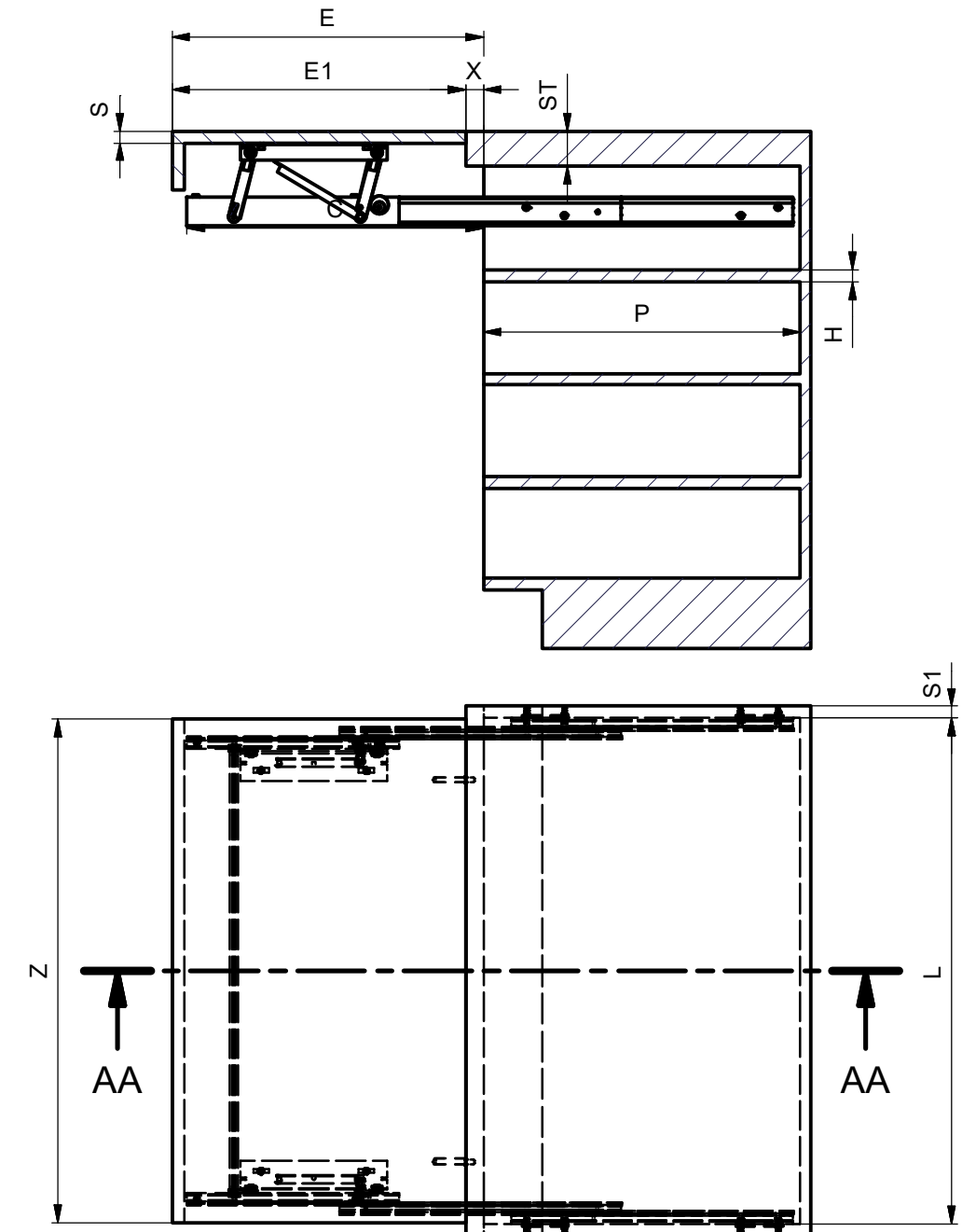
J. Distanziale per spalla - *Side spacer (x20)*

DIMENSIONI DI MASSIMA GENERAL DIMENSIONS



MODELLO - MODEL	CABINET WIDTH	L1 (mm)	L2 (mm)	L3 (mm)	L4 (mm)
1-901-002	600	560-570	455.5-465.5	381-391	445.5
1-901-004	900	860-870	755.5-765.5	681-691	745.5
1-901-006	1200	1160-1170	1055.5-1065.5	981-991	1045.5

DIMENSIONI GENERALI MOBILE GENERAL CABINET DIMENSIONS

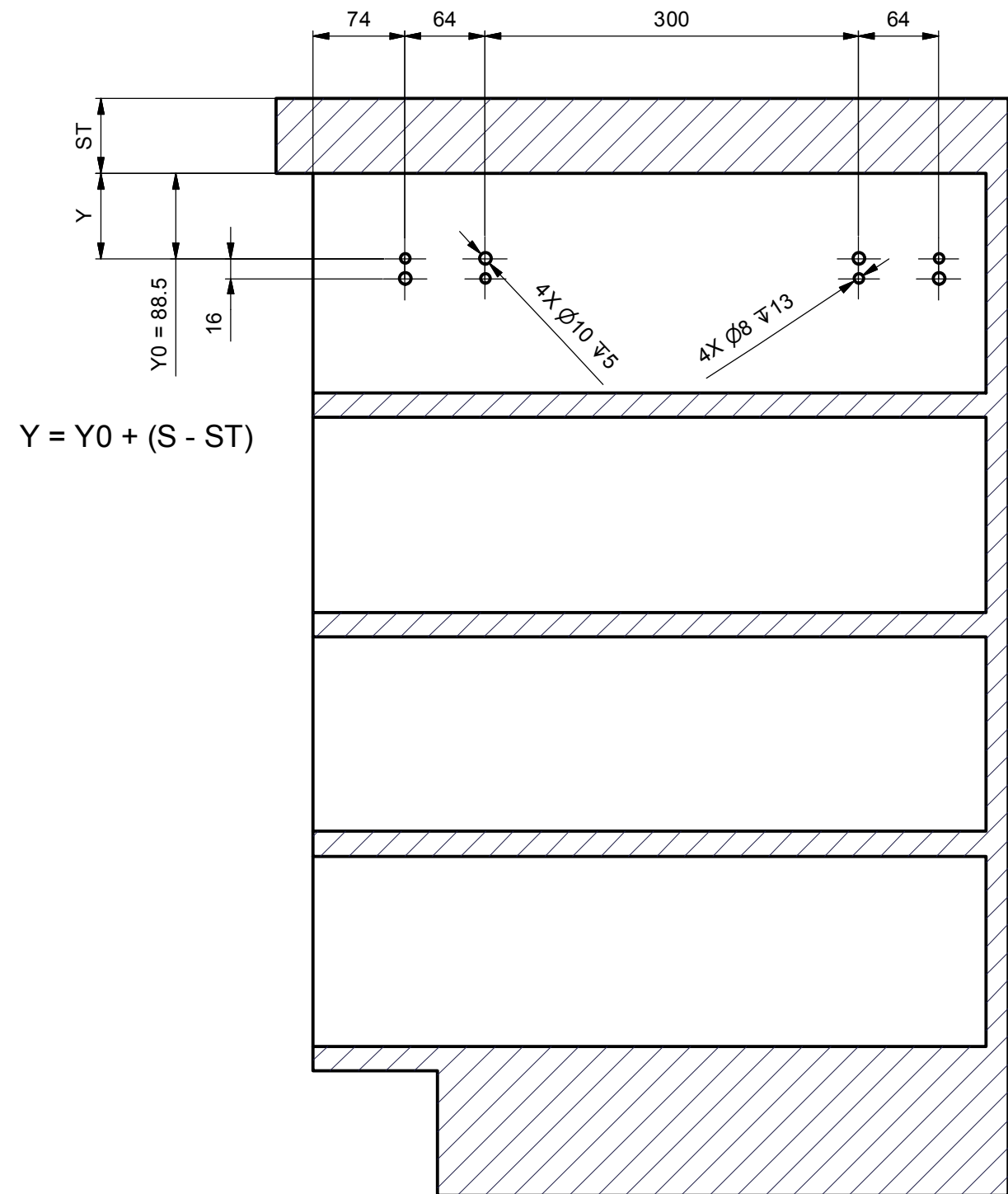
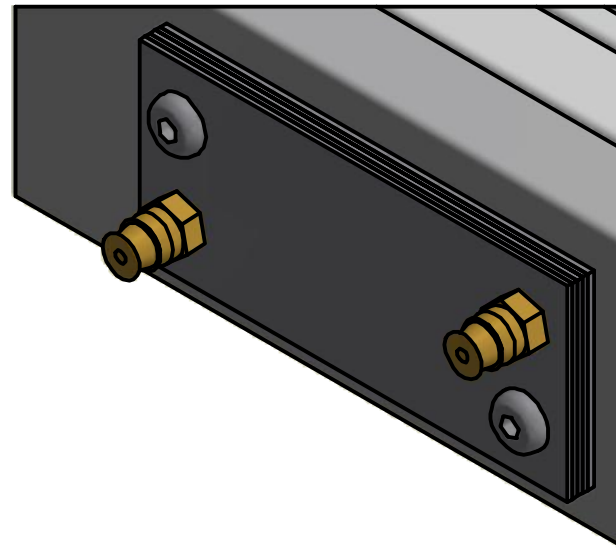


DIMENSIONE - DIMENSION	SIMBOLO - SYMBOL	mm
ALTEZZA - HIGHT	H	MIN: 75
PROFONDITA' - DEPTH	P	MIN: 540
LARGHEZZA - WIDTH	L	MIN: 410 MAX: 1170
SPESSORE PIANO - PLANE THICKNESS	S	20-60
SPESSORE SPALLE - SIDE THICKNESS	S1	15-20
SPESSORE TOP - TOP THICKNESS	ST	20-60
LARGHEZZA PIANI - PLANE WIDTH	Z	L - 5
SPORGENZA - PROTRUSION	X	-
APERTURA PIANI - OPENING PLANE	E	500
LUNGHEZZA PIANO - LENGTH PLANE	E1	E-X
APERTURA MECCANISMO - OPENING MECHANISM	C	505





POSIZIONE FORI FISSAGGIO MECCANISMO HOLES FOR MECHANISM POSITION

For cabinet sides <20 mm use included steel spacers fixing them on the external slides

Side thickness 20 mm - no spacer
 Side thickness 19 mm - 1 spacer
 Side thickness 18 mm - 2 spacers
 Side thickness 17 mm - 3 spacers
 Side thickness 16 mm - 4 spacers
 Side thickness 15 mm - 5 spacers

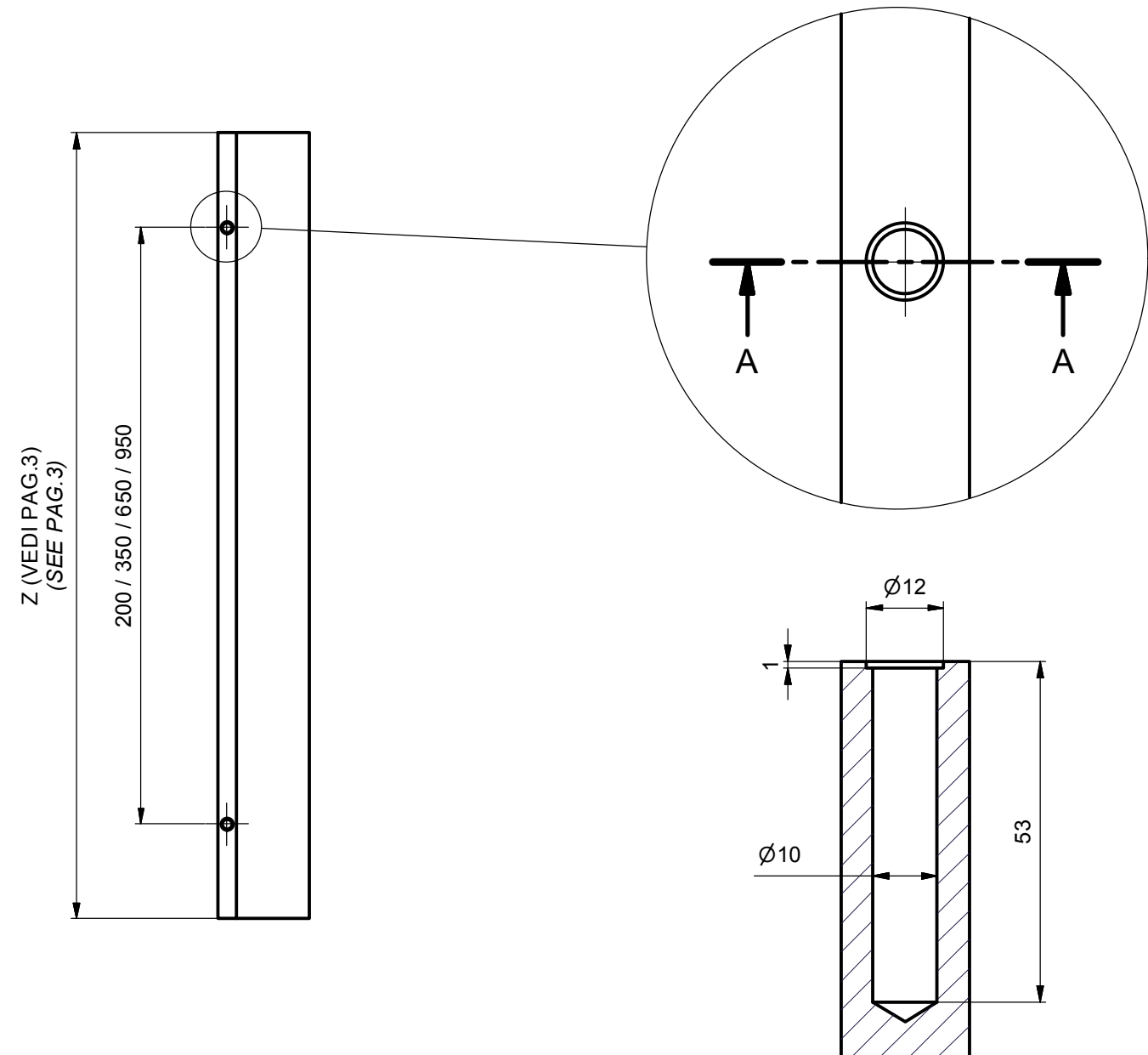
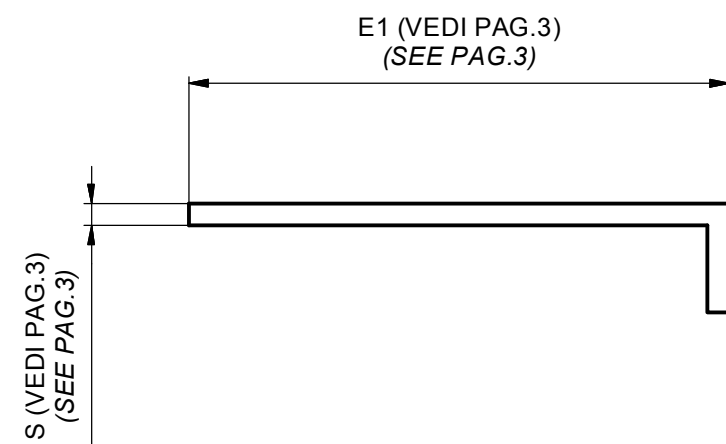
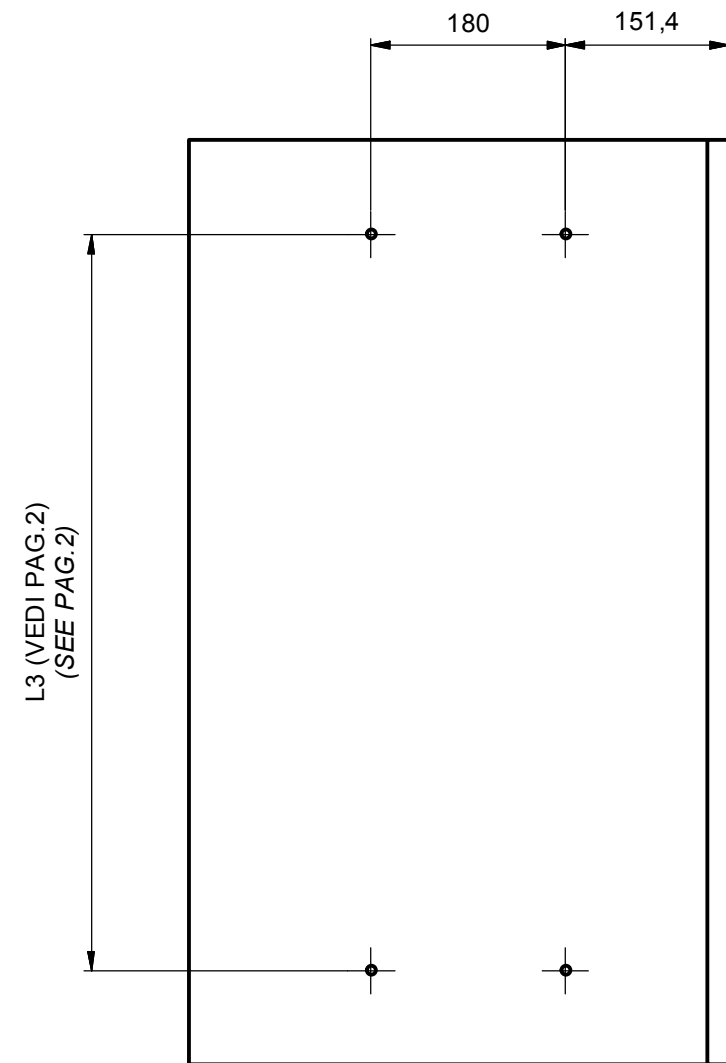


ACCESSORIES

-  B. Chiave esa. n.3 - n.3 Allen key
-  J. Distanziale per spalla - Side spacer (x 20)
-  E. Bussola in ottone M6 12x8 mm - M6 12x8 mm brass bush (x 8)
-  I. Vite TCBC E M5x10 ISO 7380 - M5x10 ISO 7380 screw (x 8)

DIMENSIONE PIANO

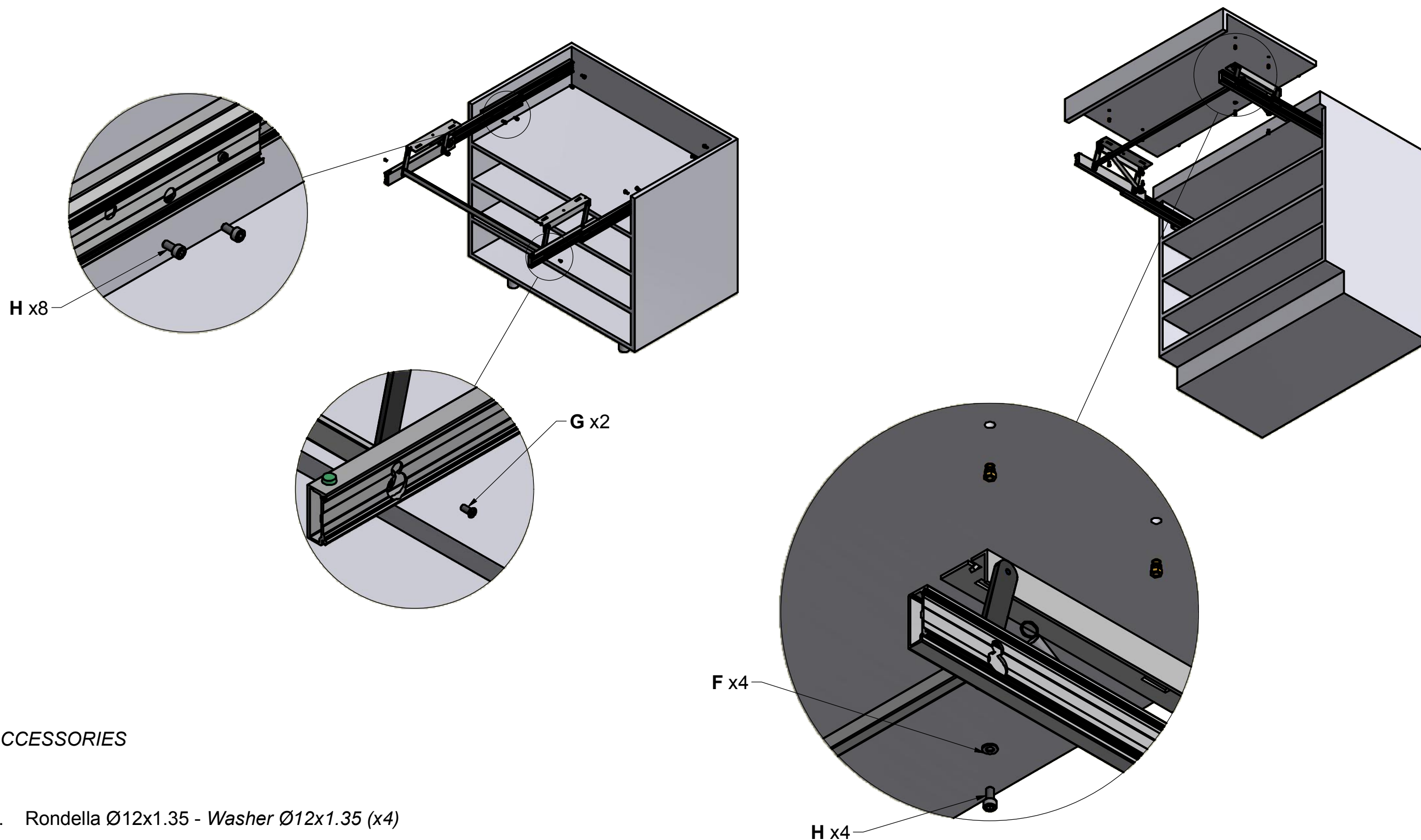
PLANE SIZE



ACCESSORIES

- D. Ammortizzatore - *Dumper* (x2)
- E. Bussola M6 12x8 mm - *Bush M6 12x8 mm* (x4)

MONTAGGIO DEL MECCANISMO SUL MOBILE MOUNTING OF THE MECHANISM ON THE CABINET



ACCESSORIES

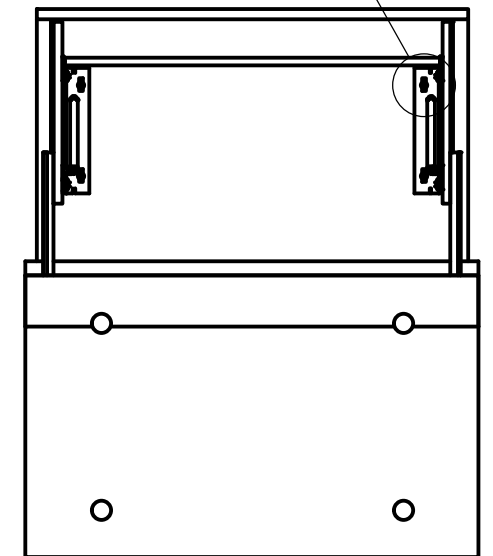
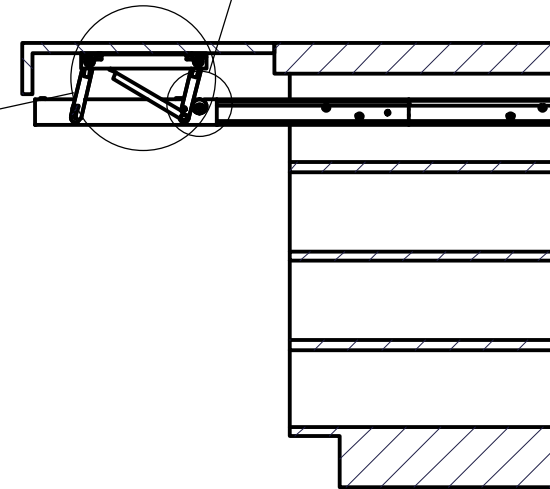
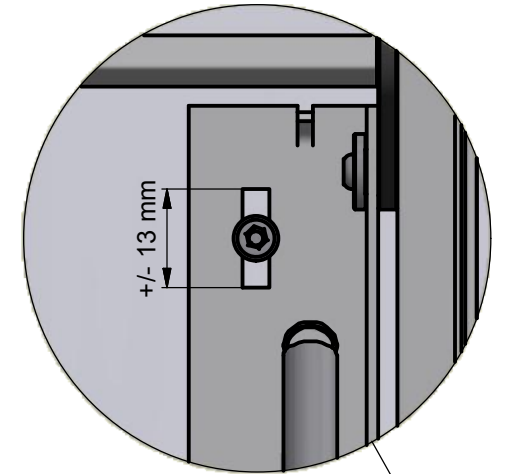
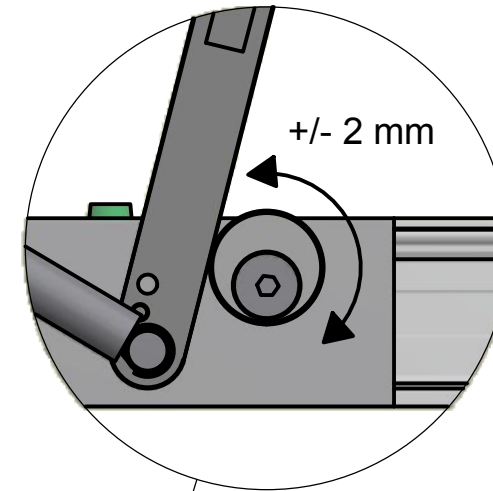
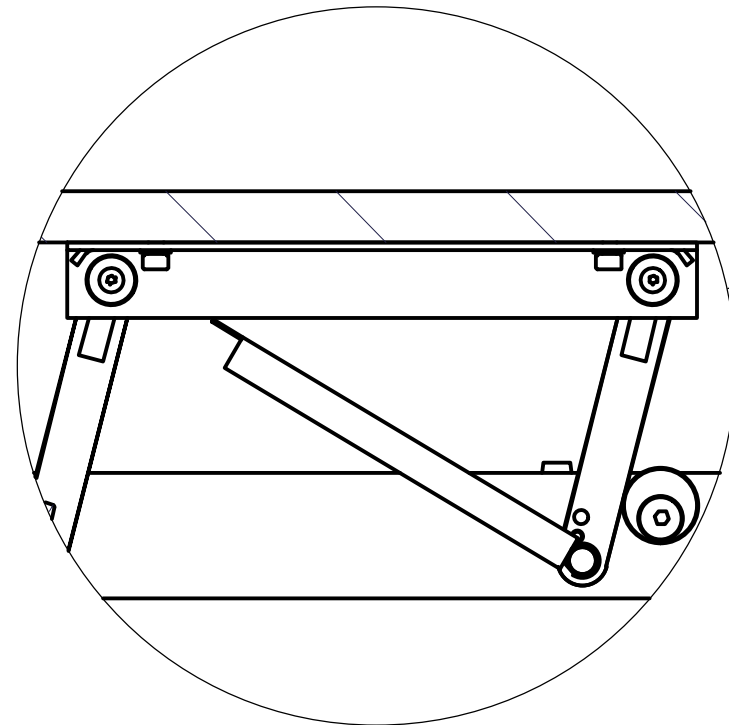
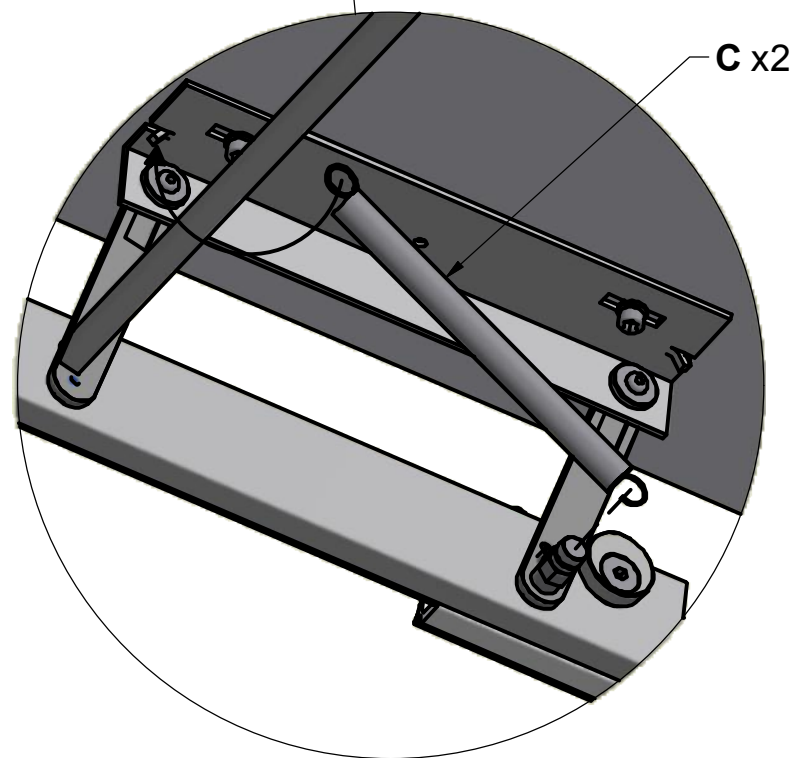
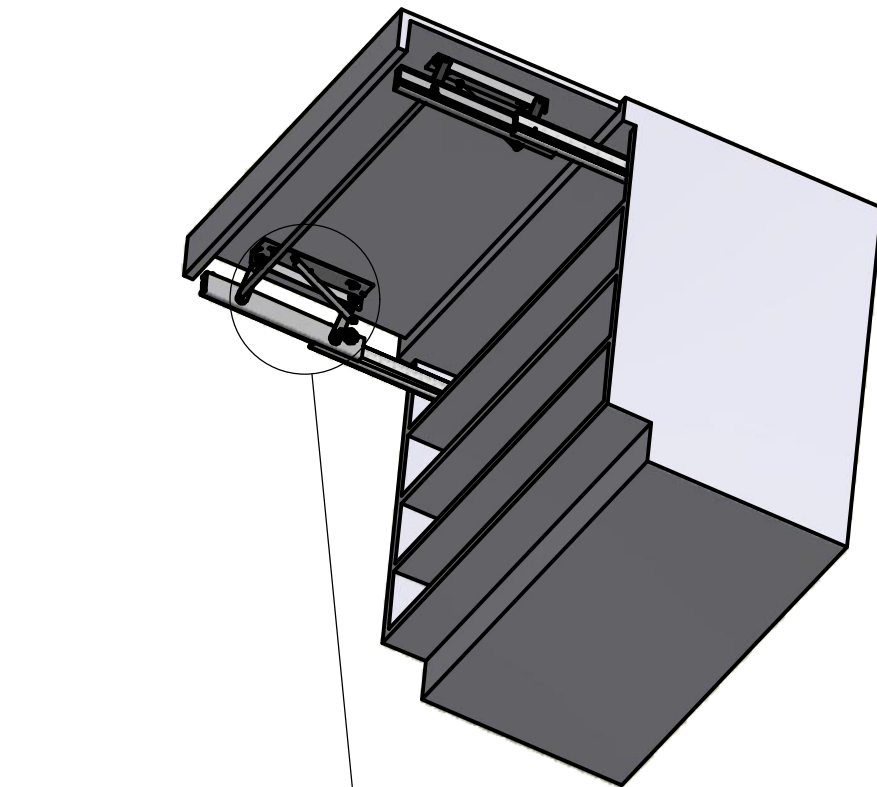
- F. Rondella Ø12x1.35 - Washer Ø12x1.35 (x4)
- G. Vite TPS M5x12 - M5x12 tapered screw (x2)
- H. Vite TCCE M6x12 - Socked head cap screw M6x12 (x12)

MONTAGGIO DEL MECCANISMO SUL MOBILE MOUNTING OF THE MECHANISM ON THE CABINET

ACCESSORIES



C. Molla - Spring (x2)



FIND POSITION AND FIX THE PLANE WITH TWO SCREWS CHIPBOARD (NOT SUPPLIED)