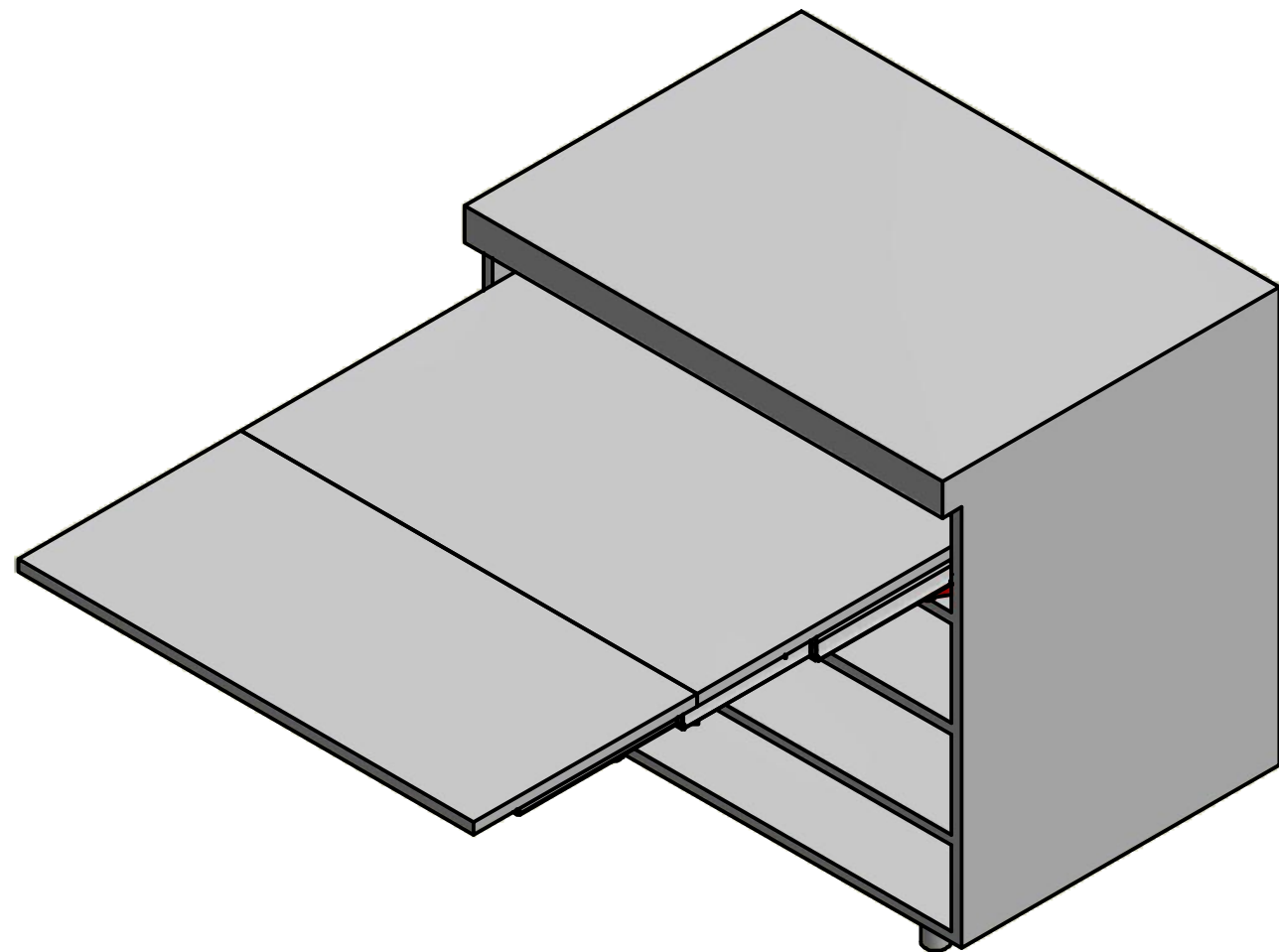


# LUNCH

## ISTRUZIONI DI MONTAGGIO ASSEMBLY INSTRUCTIONS

MODELLI  
MODELS:

1-901-024 Lunch, suitable for maximum cabinet width 1200mm.  
Cut handle to accommodate smaller cabinet widths.

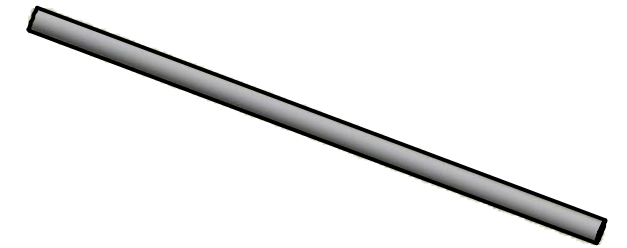


## CONTENUTO DELLA CONFEZIONE INCLUDED IN THE PACKAGING

GUIDE PREASSEMBLATE  
PRE ASSEMBLED SLIDES








MANIGLIA  
HANDLE



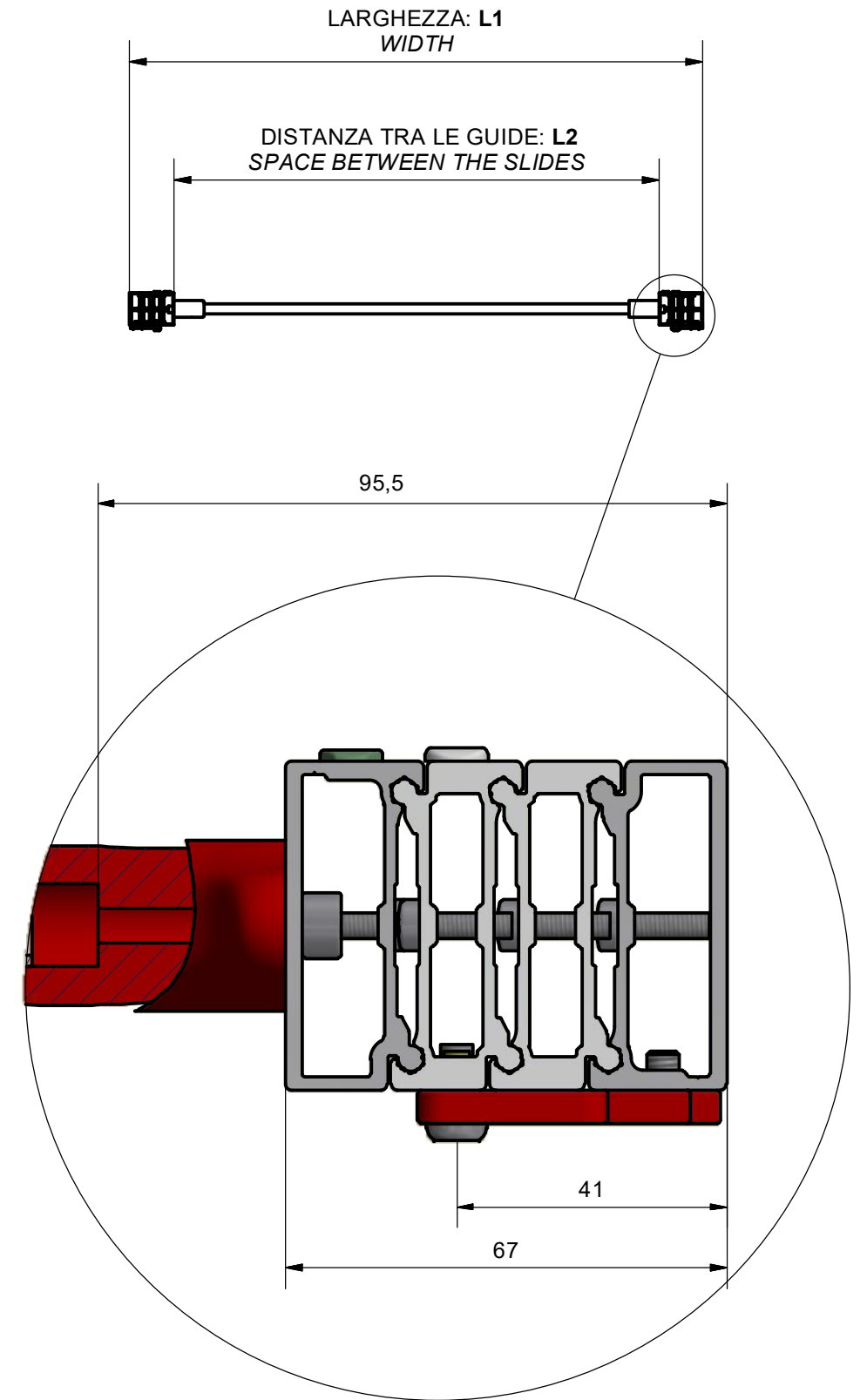
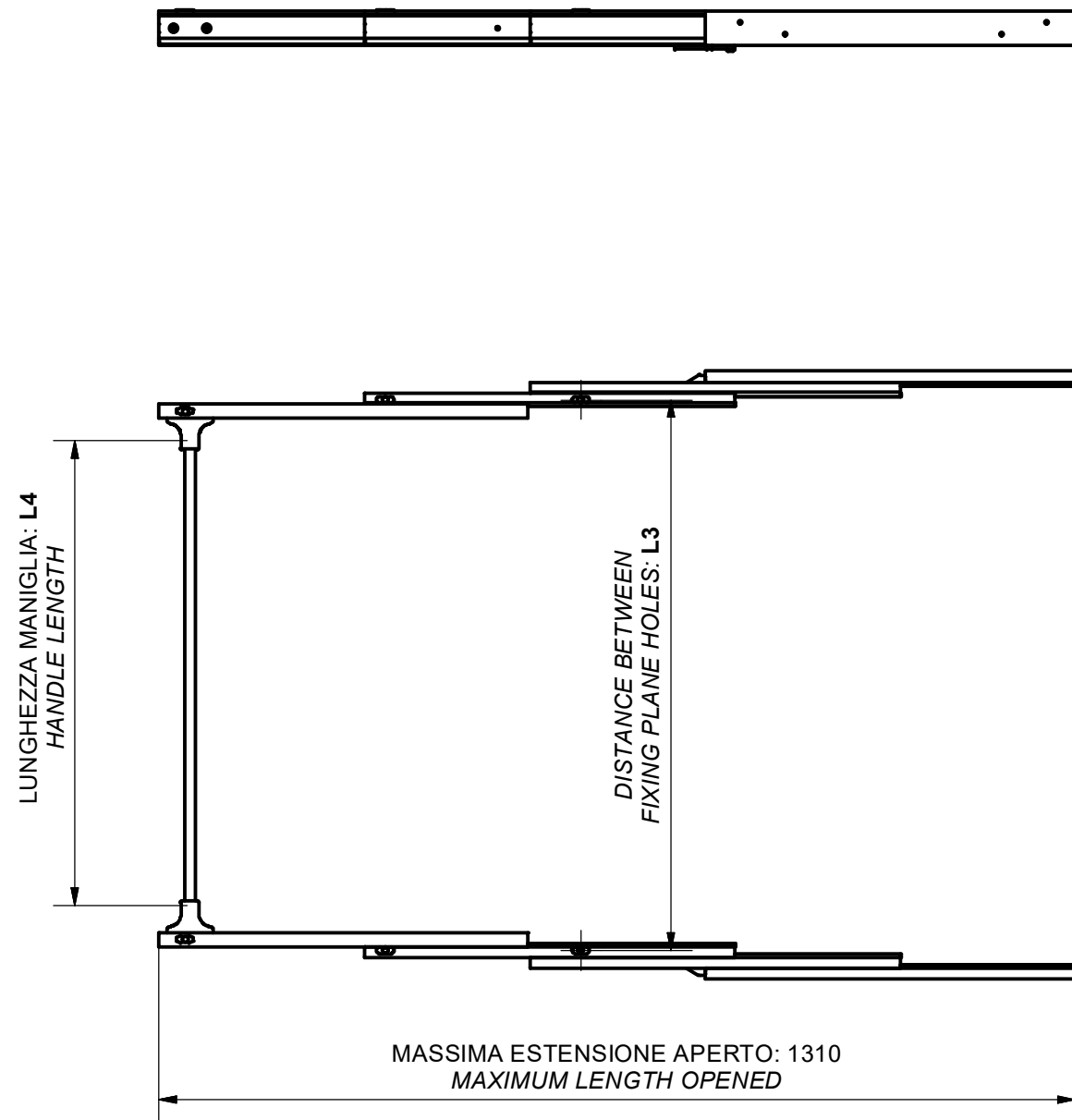
*Handle length depends on cabinet width*

*Handle mm 215/365/665/965*

### ACCESSORIES

-  A. Vite TCCE M6x60 - Socked head cap screw M6x60 (x 4)
-  B. Vite TCCE M6x12 - Socked head cap screws M6x12 (x 8)
-  C. Bussola in ottone mm 12x8 M6 - Brass bush 12x8 M6 (x 12)
-  D. Chiave esa. da 5 - n° 5 Allen key (x 1)
-  E. Chiave esa. da 4 - n° 4 Allen key (x 1)

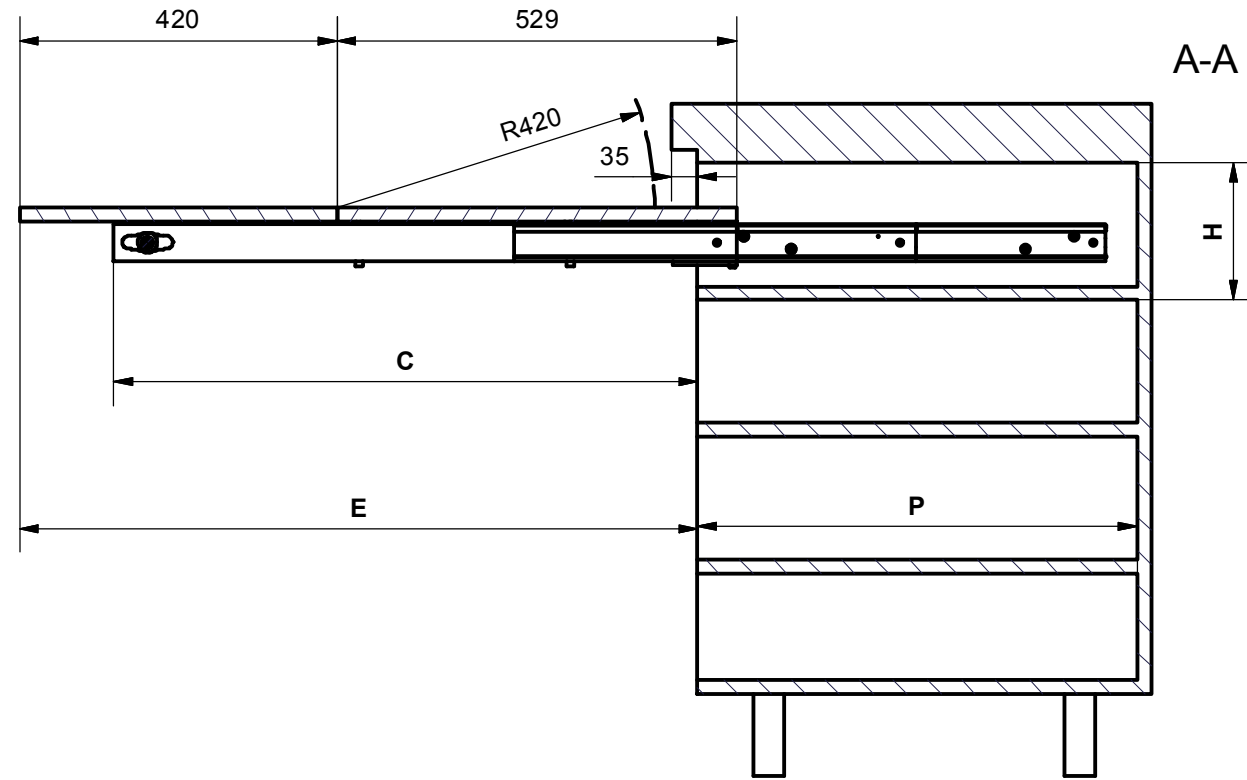
# DIMENSIONI DI MASSIMA GENERAL DIMENSIONS



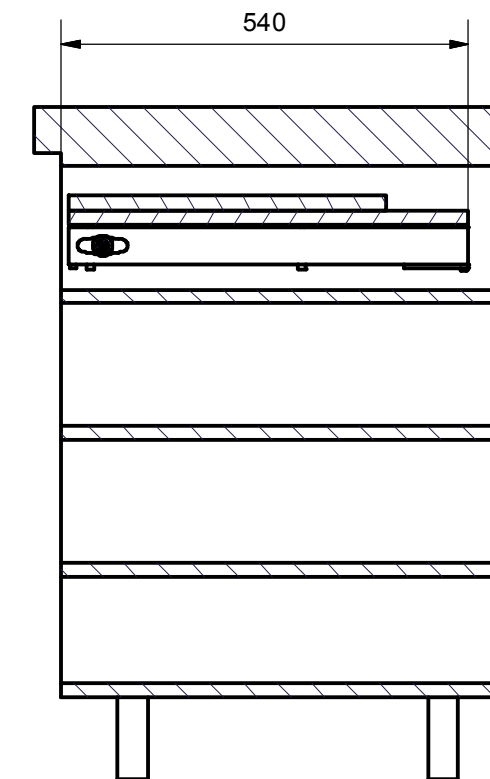
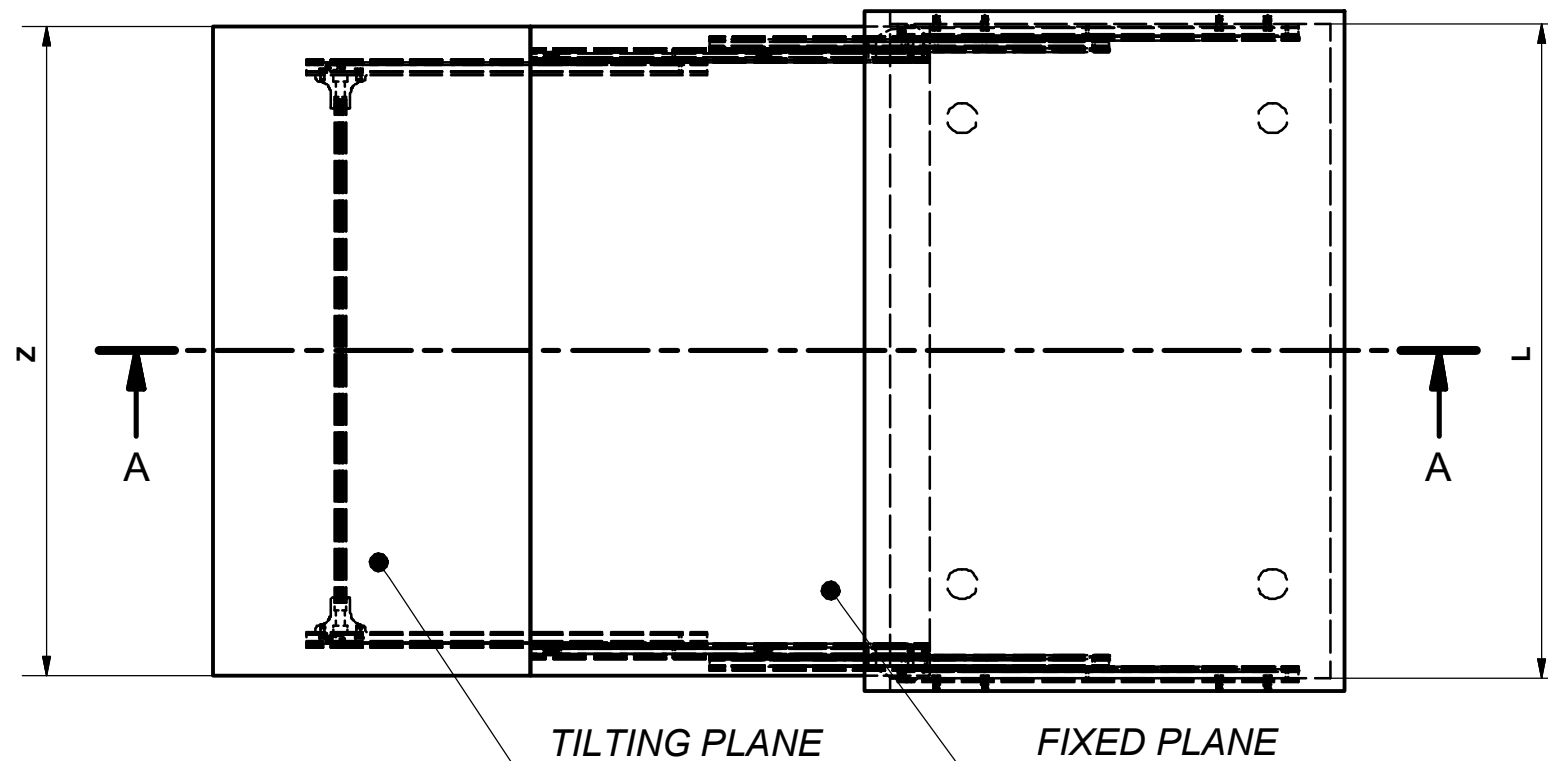
CABINET WIDTH	L1 (mm)	L2 (mm) = L1-134	L3 (mm) = L1-82	L4 (mm)
450	410-420	276 - 286	328 - 338	215
600	560-570	426-436	478-488	365
900	860-870	726-736	778-788	665
1200	1160-1170	1026-1036	1078-1088	965

(L4) Custom Cabinet Handle Length = Internal Cabinet Width (L1) - 195mm

# DIMENSIONI GENERALI MOBILE GENERAL CABINET DIMENSIONS



DIMENSION	SYMBOL	
VERTICAL FREE SPACE	H	MIN: 120 mm
INTERNAL FREE SPACE	P	MIN: 540 mm
CABINET INTERNAL WIDTH	L	MIN: 410 mm MAX: 1170 mm
PLANE AND SIDE THICKNESS	S	15-20 mm
PLANES WIDTH	Z	L - 5 mm
MAX OPENING PLANES	E	895 mm
MAX OPENING MECHANISM	C	773 mm

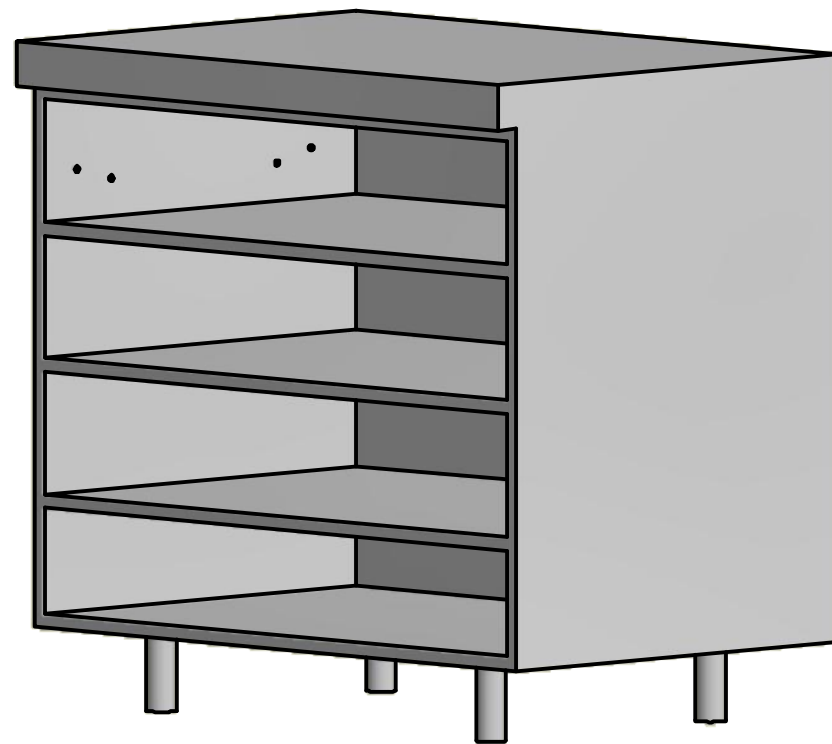


# POSIZIONE FORI FISSAGGIO MECCANISMO

## HOLES FOR MECHANISM POSITION

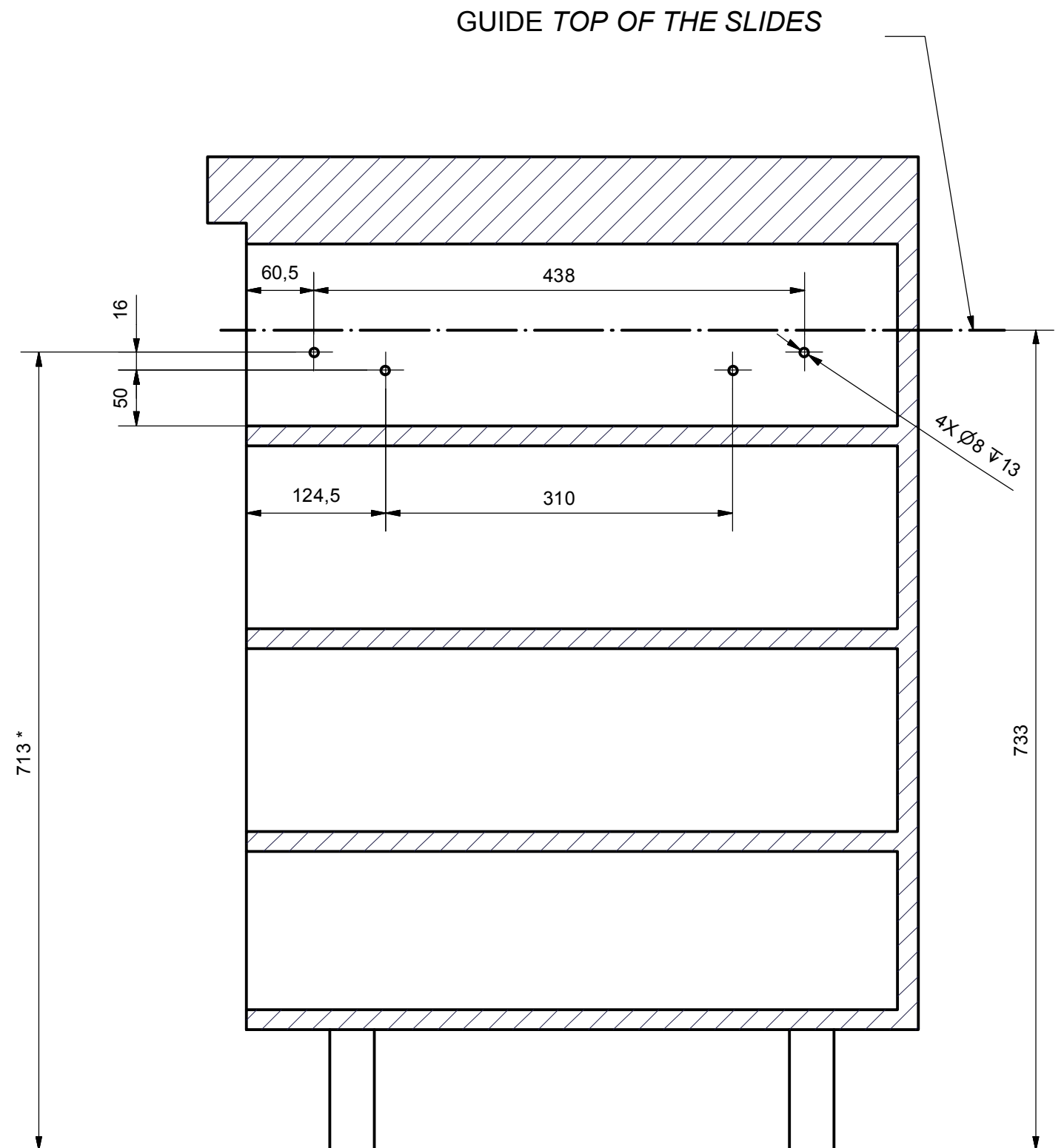


C. Bussola in ottone M6 mm 12x8 (x 8)  
M6 mm 12x8 Brass bushes

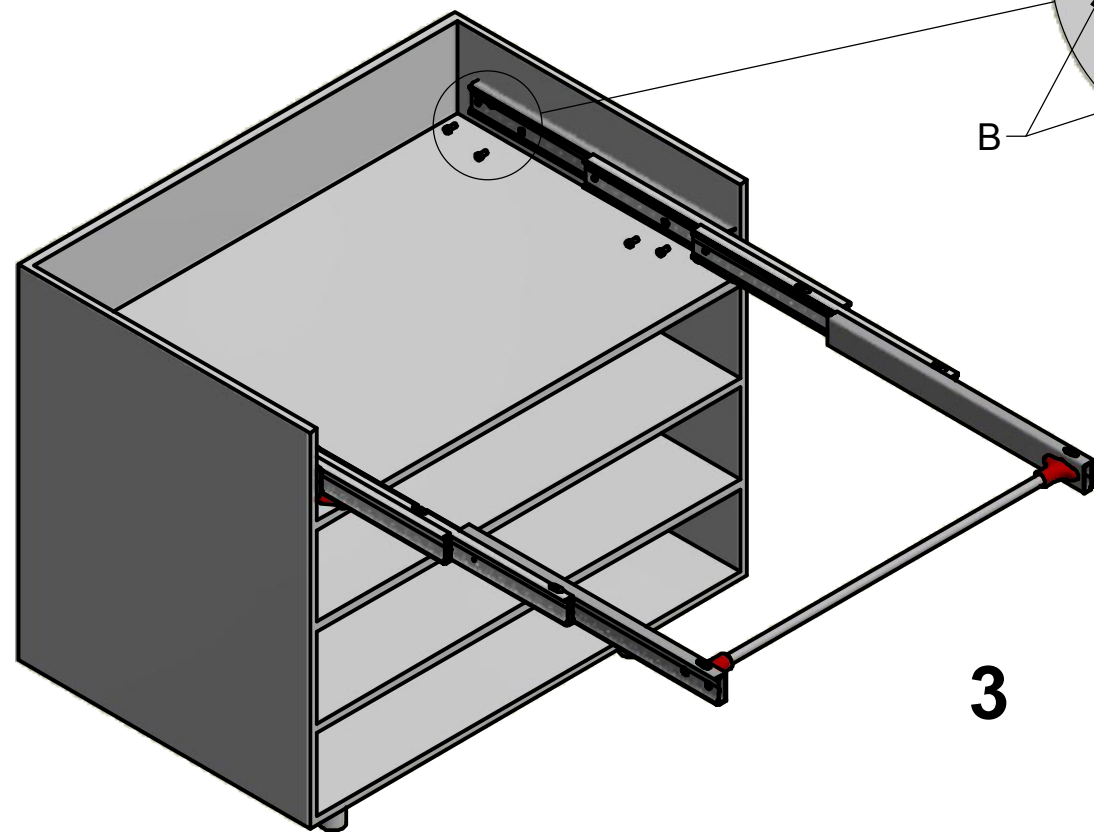
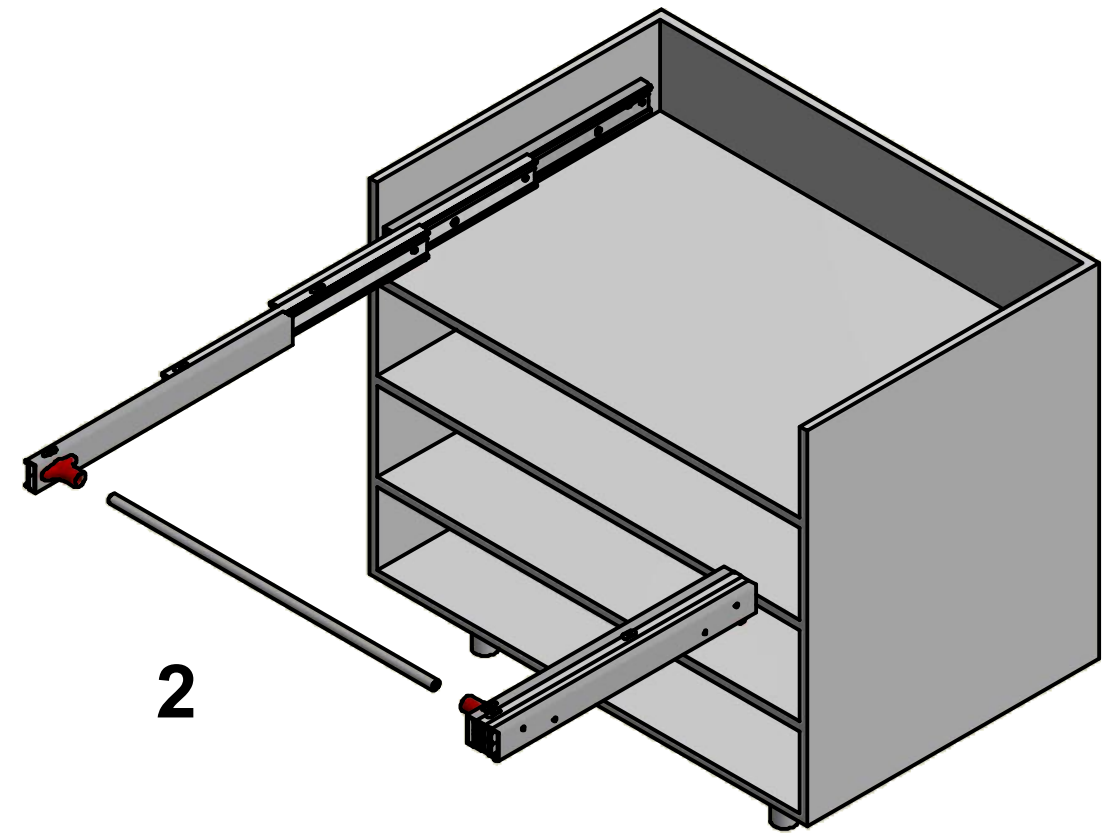
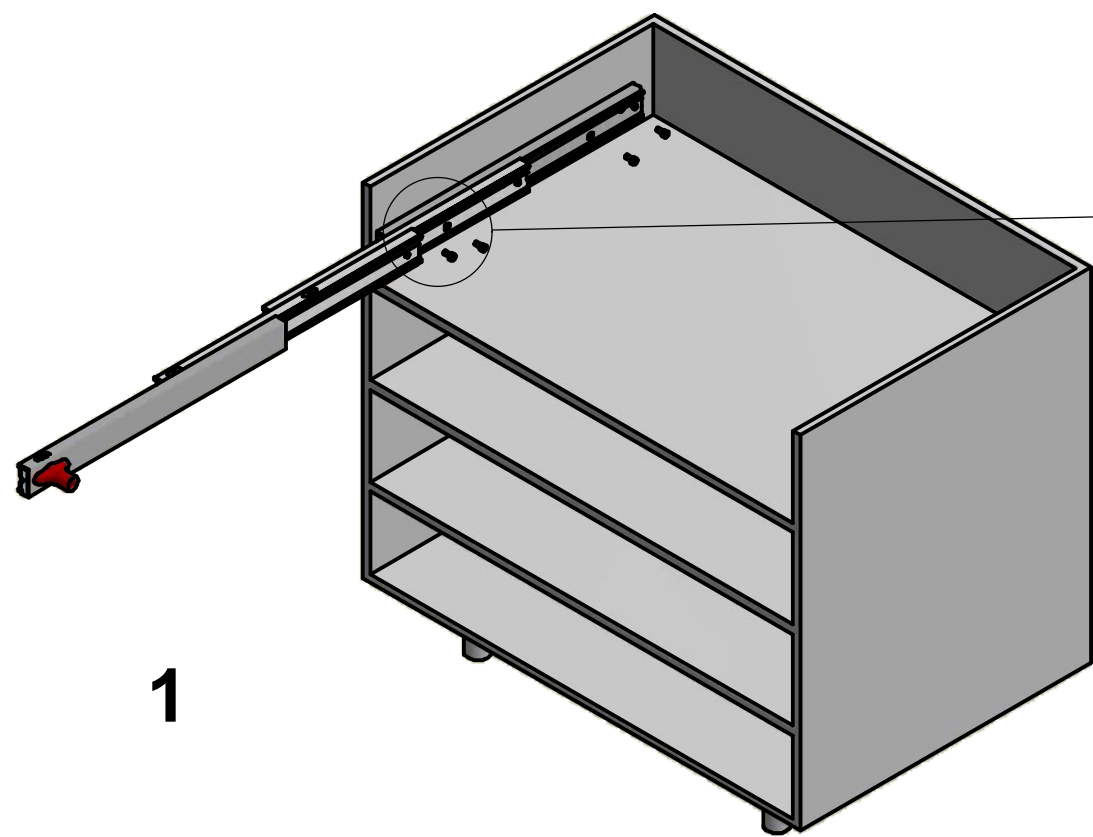




Drill on each cabinet side four  $\varnothing 8 \times 13$  holes for the included m6 brass bushes.  
the indicated 50 mm dimension leaves a free space between the bottom of the slides and the plane of about 25 mm

To compensate the mechanism flexibility, we suggest to drill the holes with a difference of 2-3 mm between the anterior holes (dimension 717.5 instead of 716) and the posterior ones (dimensione 714.5 instead of 716)

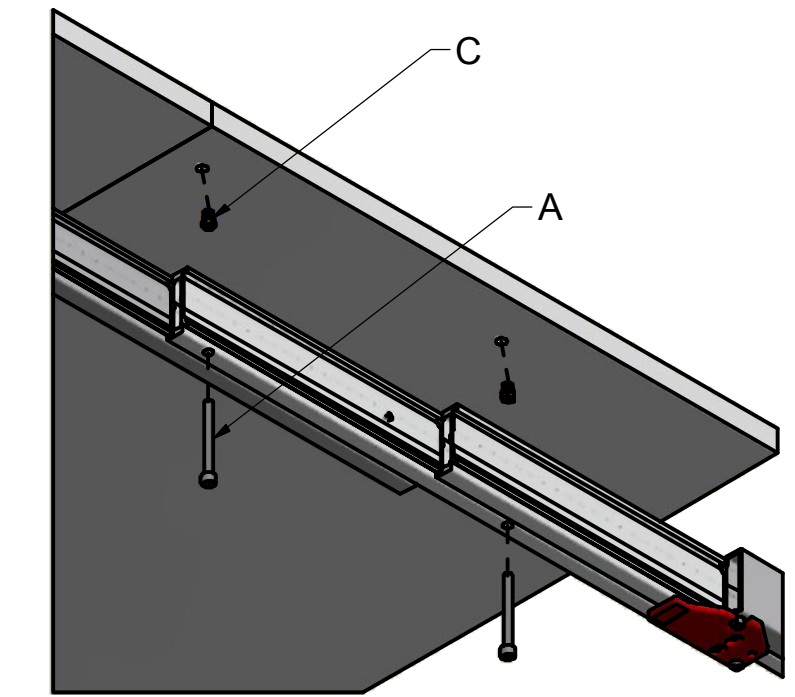
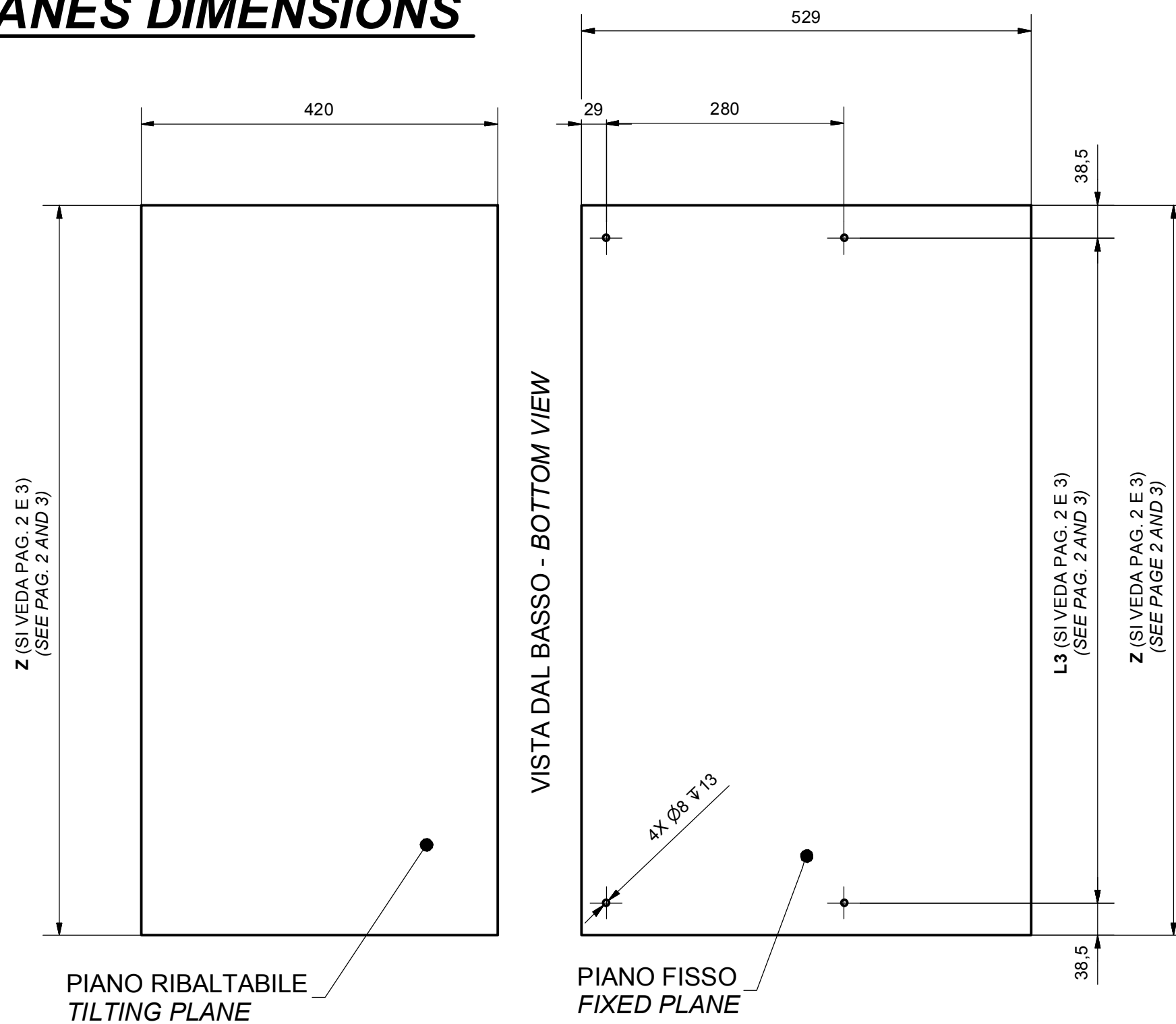


# MONTAGGIO DEL MECCANISMO SUL MOBILE MOUNTING OF THE MECHANISM ON THE CABINET






-  B. Vite TCCE M6x12 - *Socked head cap screws M6x12* (x 8)
-  D. Chiave esa. da 5 - n° 5 *Allen key* (x 1)

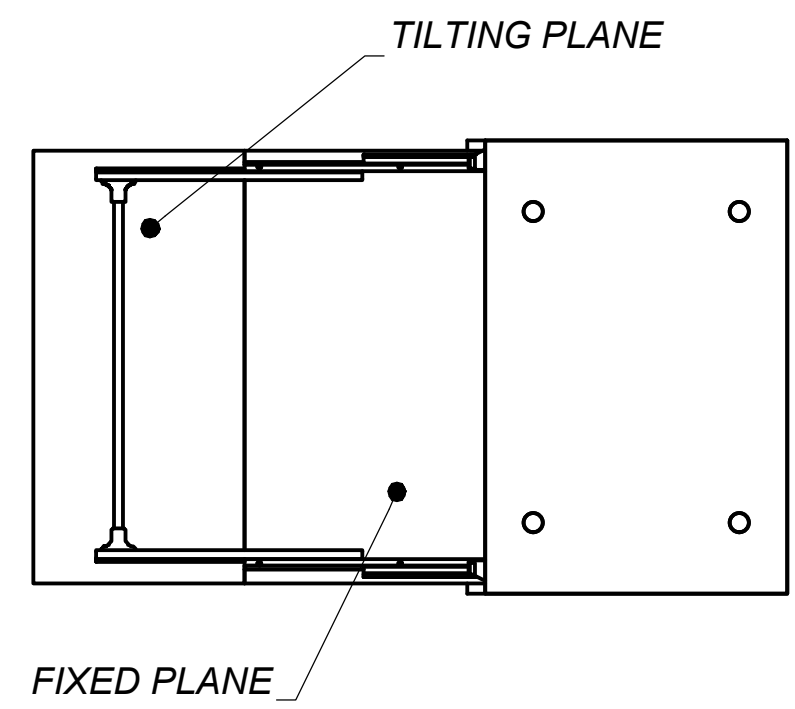
# DIMENSIONI PIANETTI PLANES DIMENSIONS



The fixed plan can be mounted using the supplied four socked head screws M6x60 (A) inserted in proper holes on the central slides.

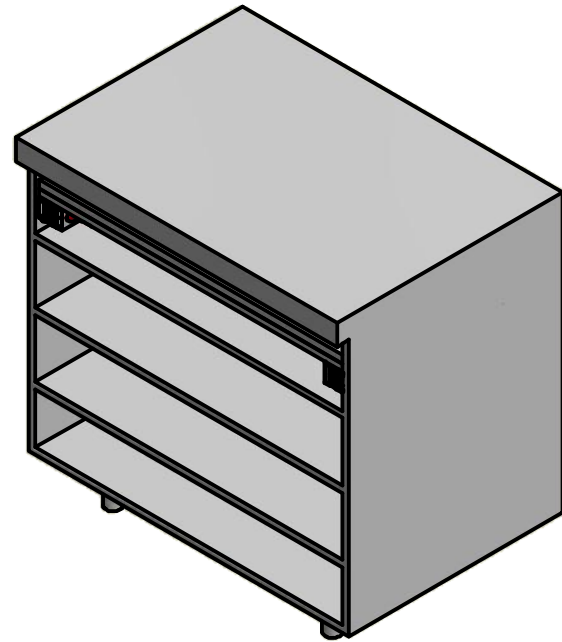
Drill under the fixed plane n. 4 Ø8 x 13 heles for M6 brass bushes (C)

-  A. Vite TCCE M6x60 - Socked head cap screw M6x60 (x 4)
-  C. Bussola in ottone mm 12x8 M6 - Brass bush 12x8 M6 (x 4)
-  D. Chiave esa. da 5 - n° 5 Allen key (x 1)

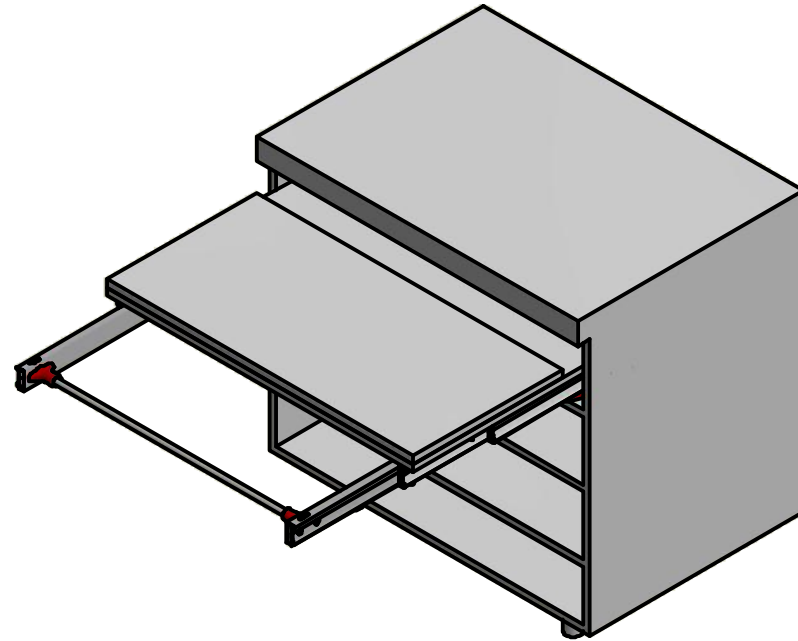


# SEQUENZA DI FUNZIONAMENTO FUNCTIONING STEPS

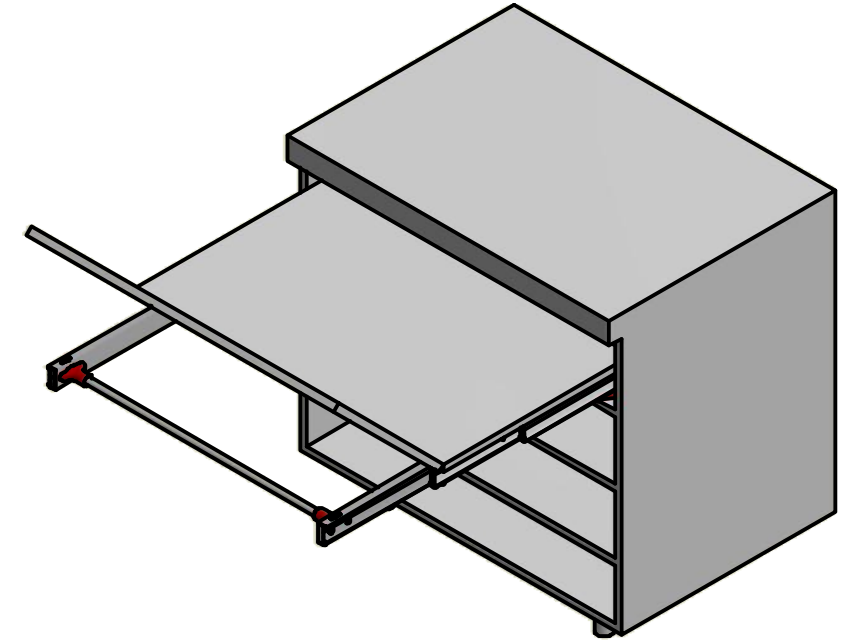
CLOSED



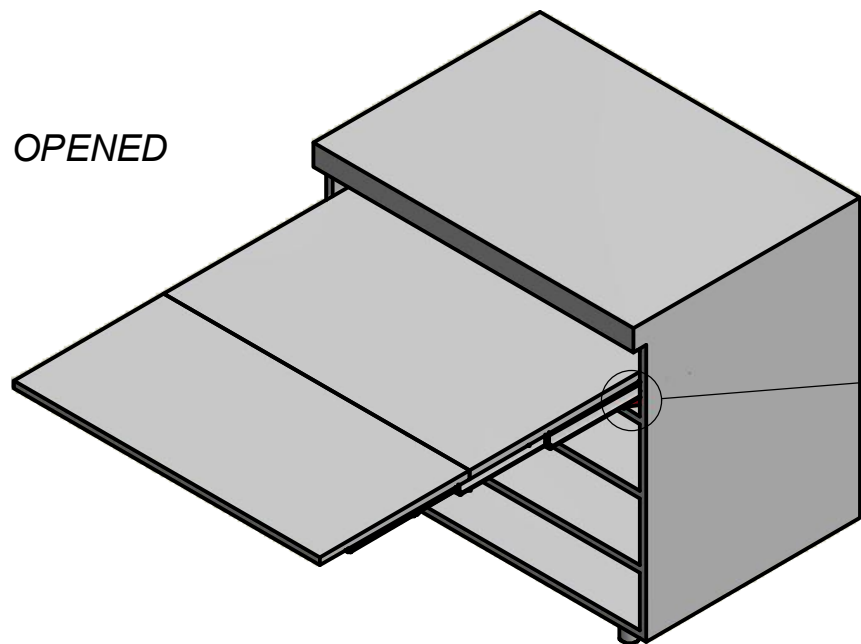
SLIDES OPENING



PLANE TILTING



OPENED



PUSH THE RED LEVER TO CLOSE THE MECHANISM

