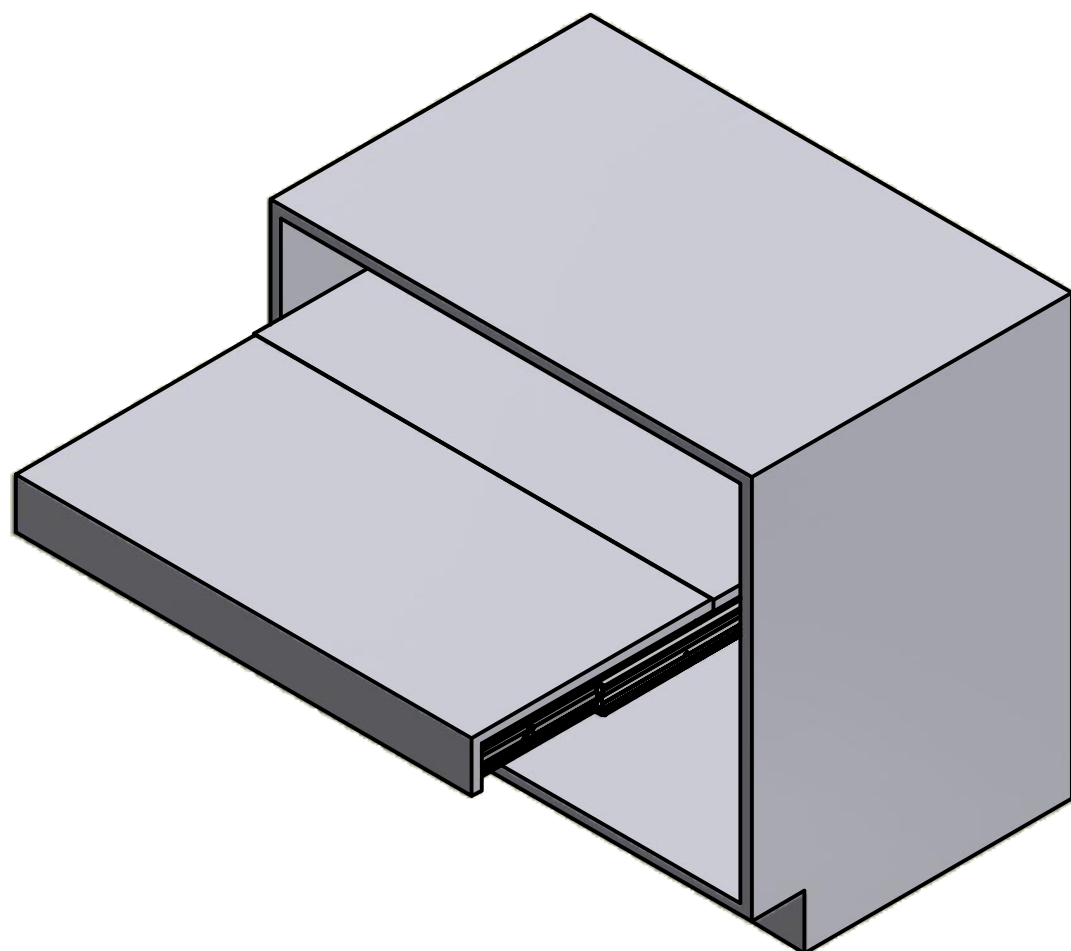


# OPLA'

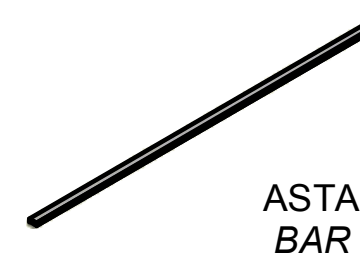
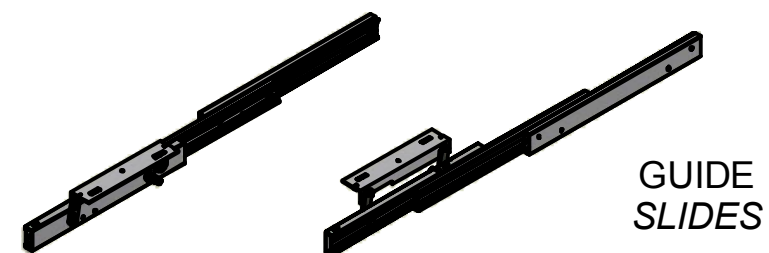
## ISTRUZIONI DI MONTAGGIO ASSEMBLY INSTRUCTIONS

MODELLI:  
MODELS:











1-901-012 Oplà 600 mm  
1-901-014 Oplà 900 mm  
1-901-016 Oplà 1200 mm



## CONTENUTO DELLA CONFEZIONE INCLUDED IN THE PACKAGING

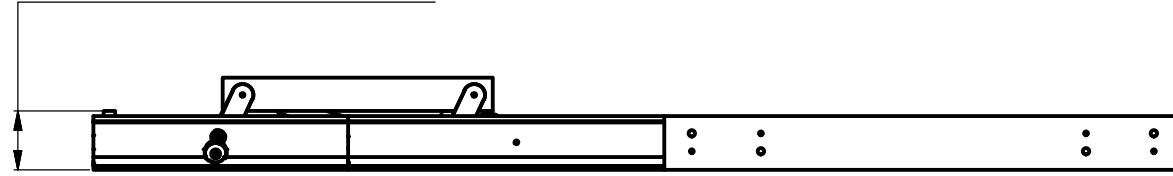


### SACCHETTO ACCESSORI - ACCESSORIES

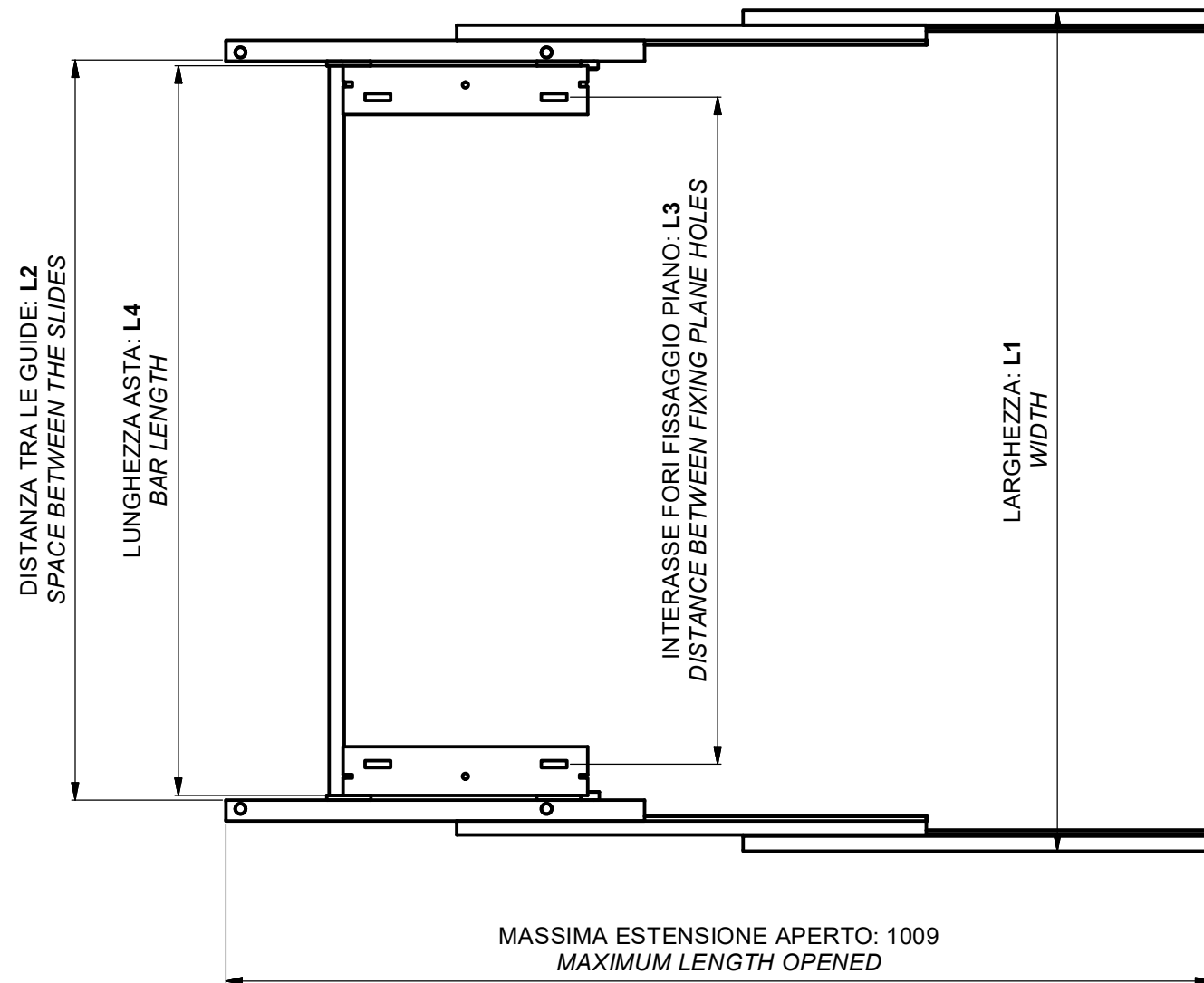
-  A. Chiave esa. n.5 - *n.5 Allen key*
-  B. Chiave esa. n.3 - *n.3 Allen key*
-  C. Molla - *Spring (x2)*
-  D. Ammortizzatore - *Dumper (x2)*
-  E. Bussola M6 12x8 mm - *Bush M6 12x8 mm (x12)*
-  F. Rondella Ø12x1.35 - *Washer Ø12x1.35 (x4)*
-  G. Vite TPS M5x12 - *M5x12 tapered screw (x2)*
-  H. Vite TCCE M6x12 - *Socketed head cap screw M6x12 (x12)*
-  I. Vite TCBCE M5x10 ISO 7380 - *M5x10 ISO 7380 screw (x8)*
-  J. Distanziale per spalla - *Side spacer (x20)*

# DIMENSIONI DI MASSIMA GENERAL DIMENSIONS

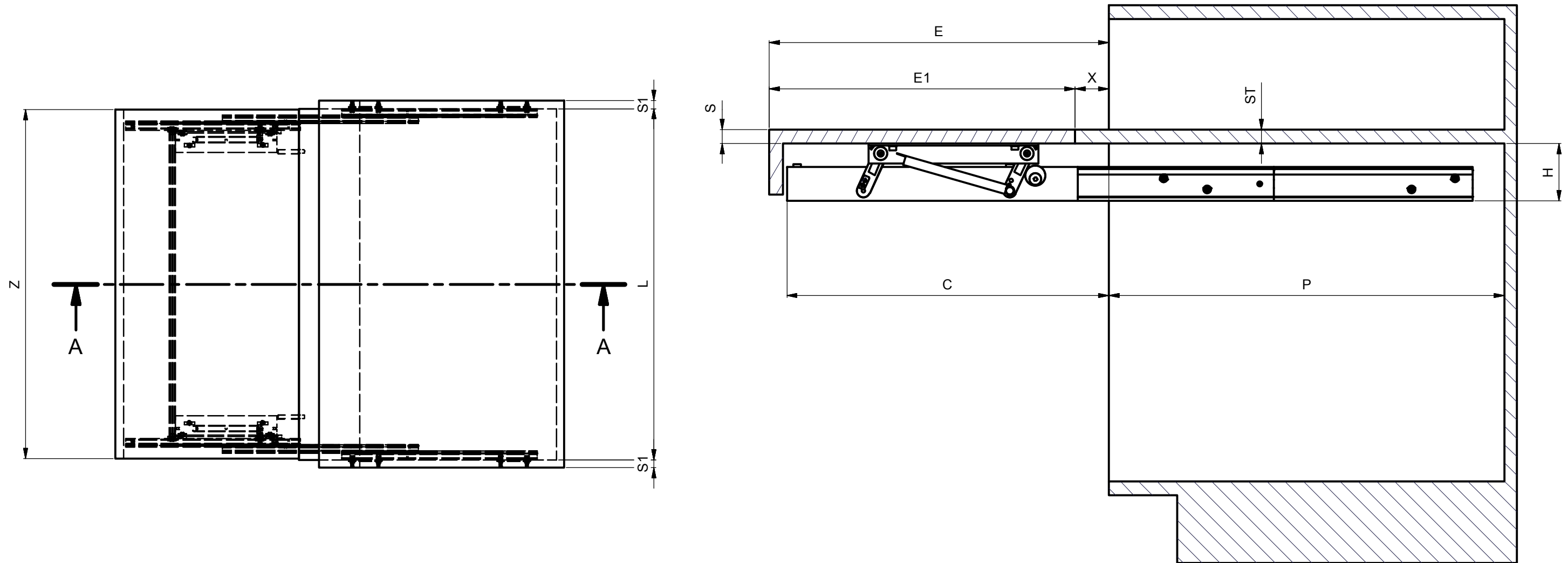
INGOMBRO IN ALTEZZA: 55  
OVERALL HEIGHT



MODELLO - MODEL	MODULO - MODULE	L1 (mm)	L2 (mm)	L3 (mm)	L4 (mm)
1-901-012	600	560-570	455.5-465.5	381-391	445.5
1-901-014	900	860-870	755.5-765.5	681-691	745.5
1-901-016	1200	1160-1170	1055.5-1065.5	981-991	1045.5



# DIMENSIONI GENERALI MOBILE GENERAL CABINET DIMENSIONS



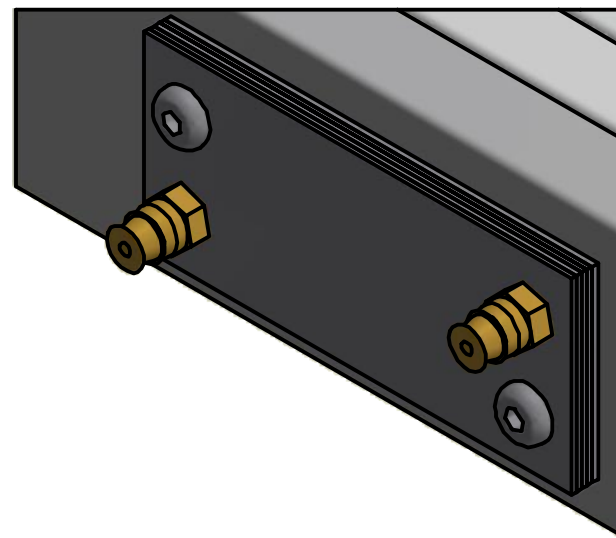
DIMENSIONE - DIMENSION	SIMBOLO - SYMBOL	mm
LUCE VERTICALE - VERTICAL FREE SPACE	H	MIN: 75
PROFONDITA' INTERNA - INTERNAL FREE SPACE	P	MIN: 540
LARGHEZZA INTERNA MODULO - CABINET INTERNAL WIDTH	L	MIN: 410 MAX: 1170
SPESSORE PIANO - PLANE THICKNESS	S	15-20
SPESSORE SPALLE - SIDE THICKNESS	S1	15-20
SPESSORE TOP - TOP THICKNESS	ST	15-20
LARGHEZZA PIANI - PLANE WIDTH	Z	L - 5
SPORGENZA - PROTRUSION	X	-
APERTURA PIANI - OPENING PLANE	E	500
LUNGHEZZA PIANO - LENGTH PLANE	E1	E-X
APERTURA MECCANISMO - OPENING MECHANISM	C	470

# POSIZIONE FORI FISSAGGIO MECCANISMO

## HOLES FOR MECHANISM POSITION

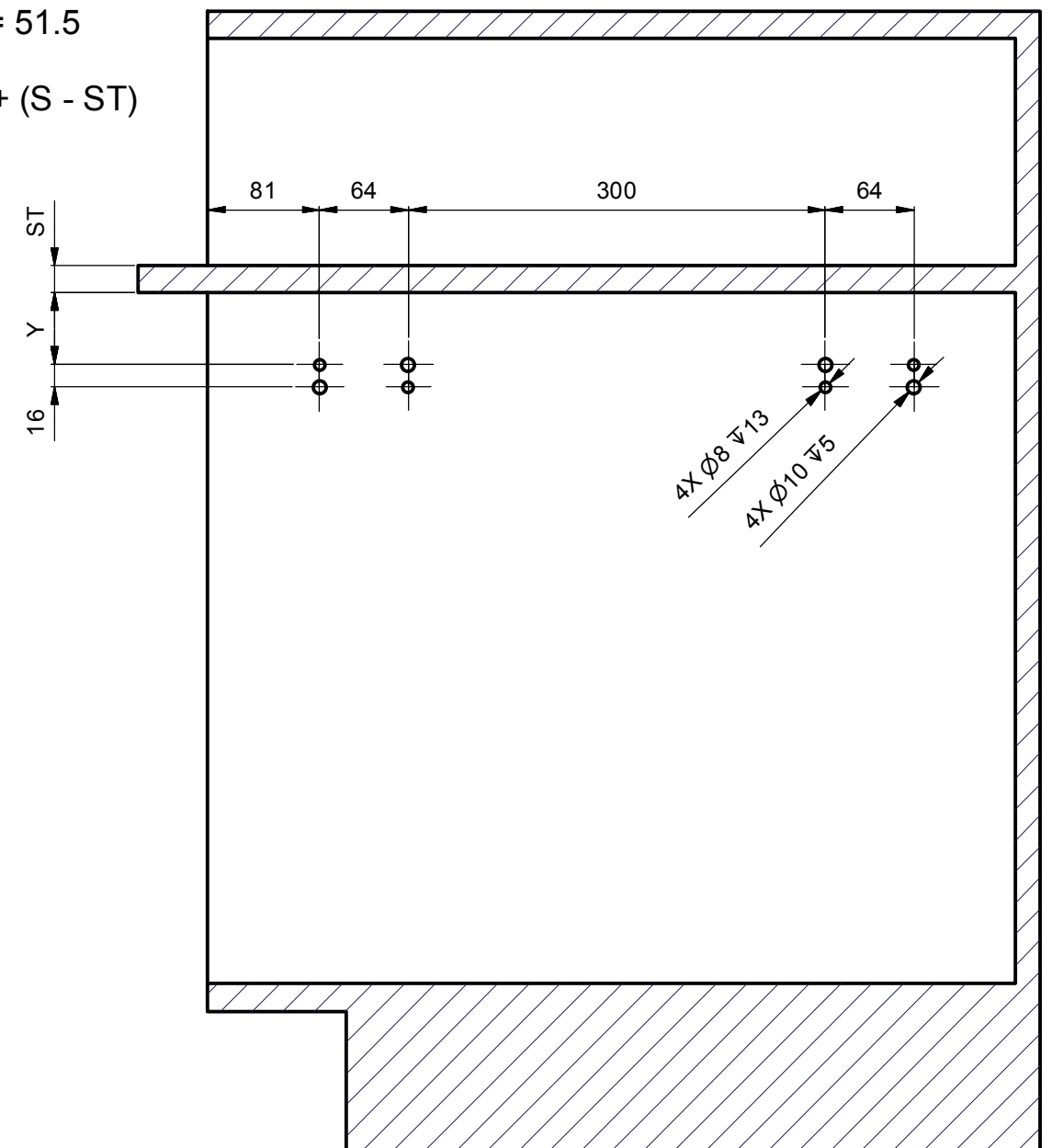
For cabinet sides <20 mm use included steel spacers fixing them on the external slides

Side thickness 20 mm - no spacer  
 Side thickness 19 mm - 1 spacer  
 Side thickness 18 mm - 2 spacers  
 Side thickness 17 mm - 3 spacers  
 Side thickness 16 mm - 4 spacers  
 Side thickness 15 mm - 5 spacers







$$Y_0 = 51.5$$

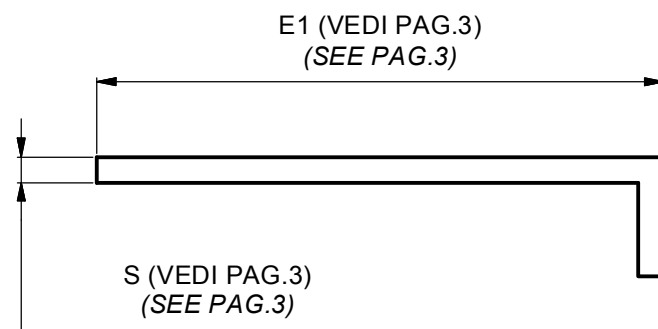
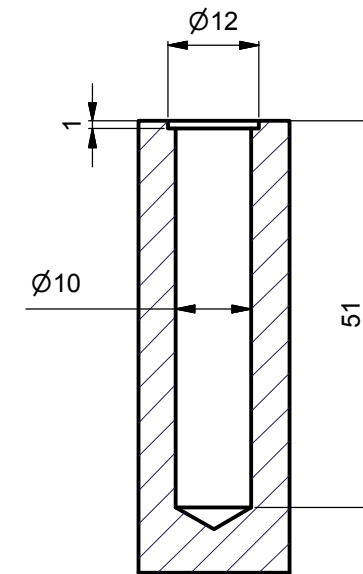
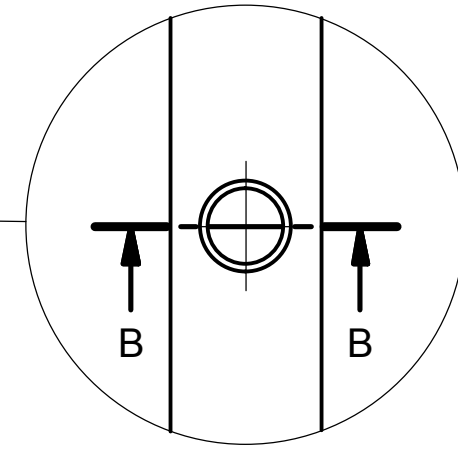
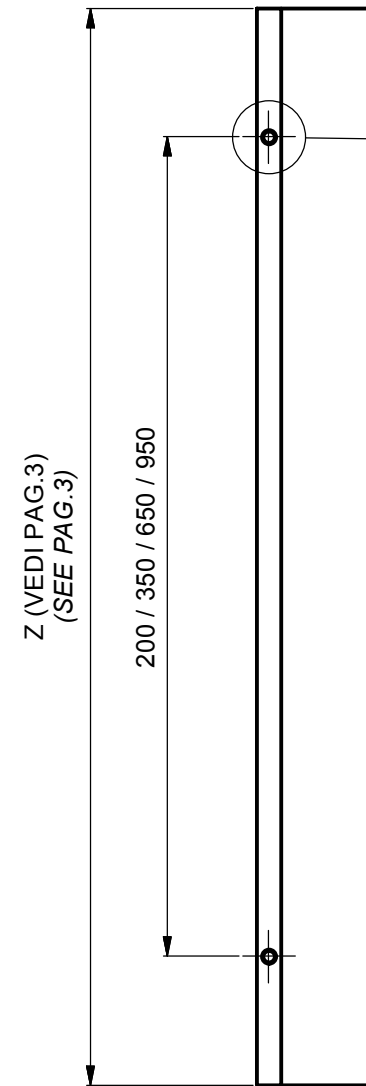
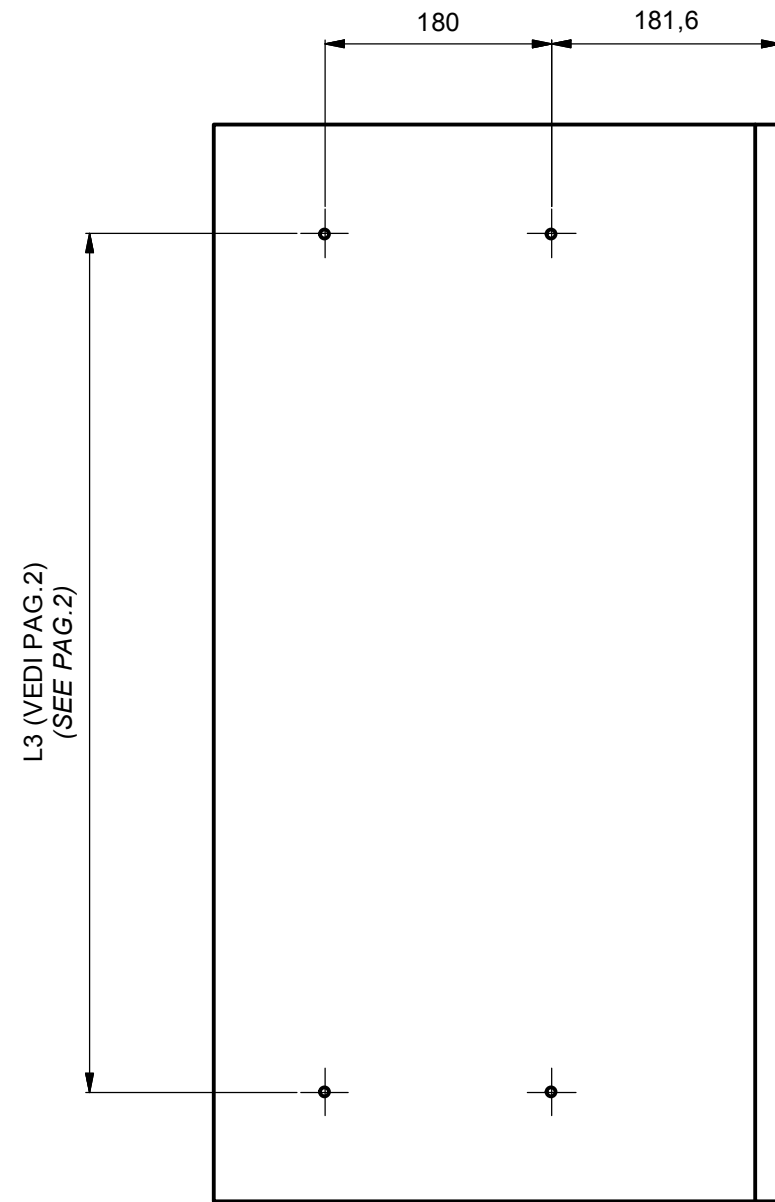
$$Y = Y_0 + (S - ST)$$



### ACCESSORIES

-  B. Chiave esa. n.3 - n.3 Allen key
-  J. Distanziale per spalla - Side spacer (x 20)
-  E. Bussola in ottone M6 12x8 mm - M6 12x8 mm brass bush (x 8)
-  I. Vite TCBCE M5x10 ISO 7380 - M5x10 ISO 7380 screw (x 8)

# DIMENSIONE PIANO PLANE SIZE



## ACCESSORIES

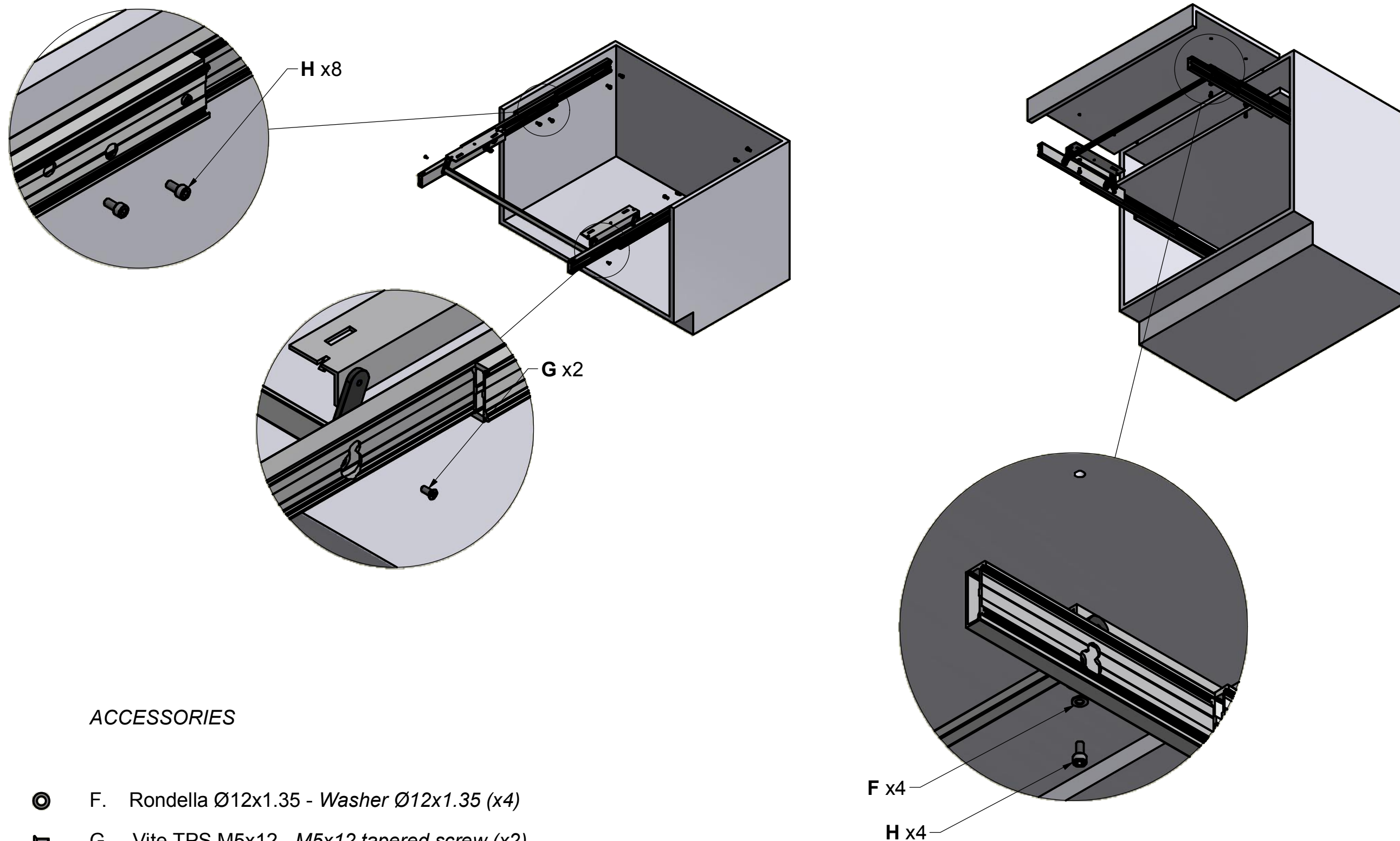


D. Ammortizzatore - *Dumper* (x2)



E. Bussola M6 12x8 mm - *Bush M6 12x8 mm* (x4)

# MONTAGGIO DEL MECCANISMO SUL MOBILE MOUNTING OF THE MECHANISM ON THE CABINET



## ACCESSORIES

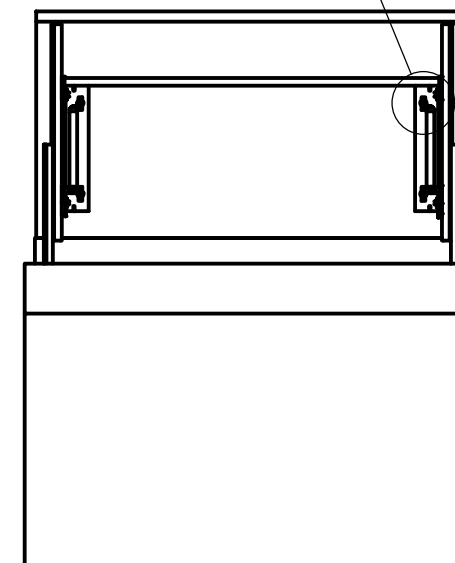
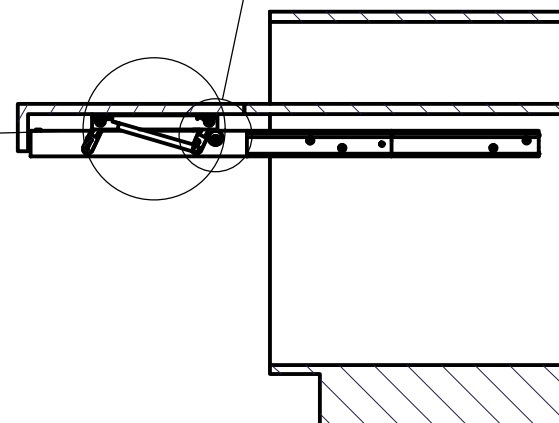
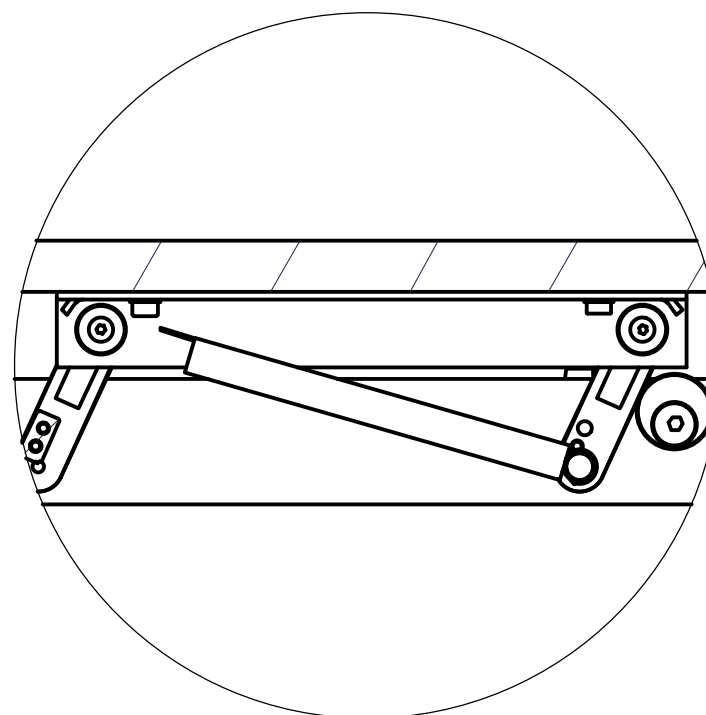
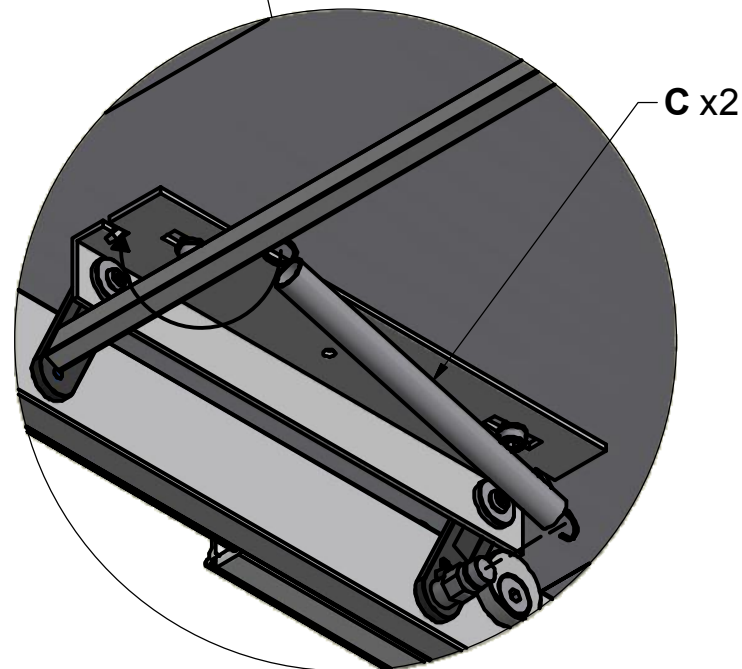
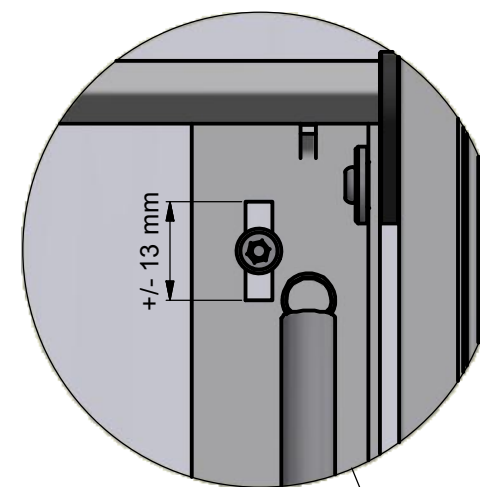
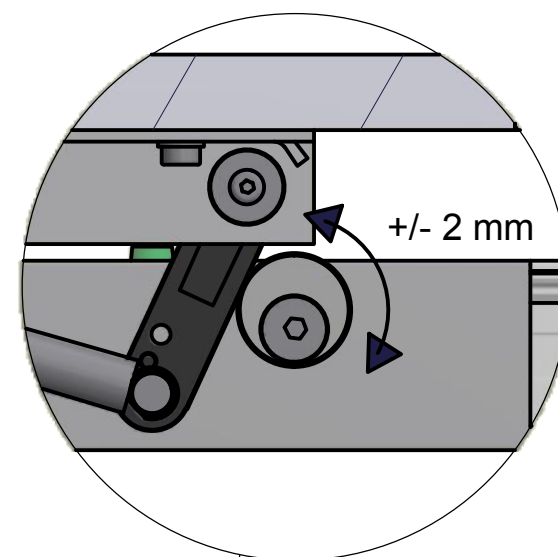
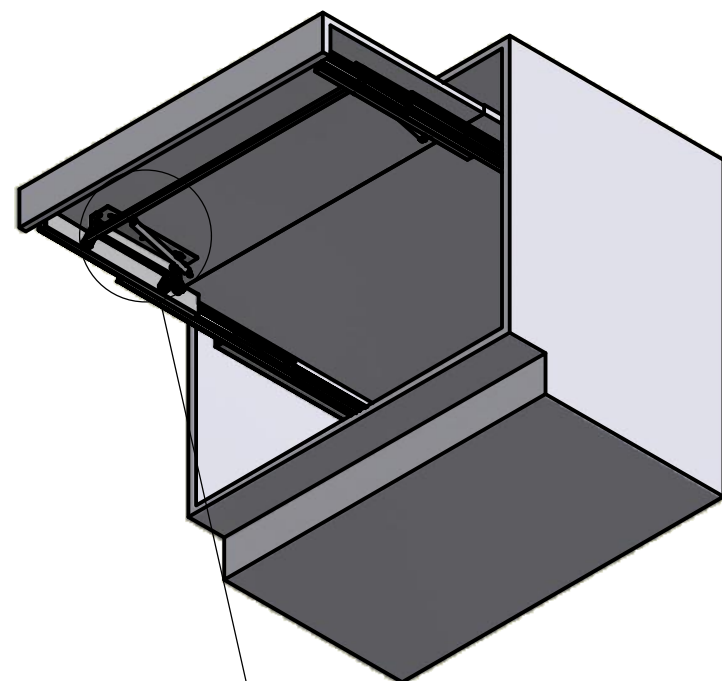
- ⊙ F. Rondella Ø12x1.35 - Washer Ø12x1.35 (x4)
- ▮ G. Vite TPS M5x12 - M5x12 tapered screw (x2)
- ▮ H. Vite TCCE M6x12 - Socked head cap screw M6x12 (x12)

# MONTAGGIO DEL MECCANISMO SUL MOBILE MOUNTING OF THE MECHANISM ON THE CABINET

## ACCESSORIES



C. Molla - Spring (x2)



FIND POSITION AND FIX THE PLANE WITH  
TWO SCREWS CHIPBOARD (NOT SUPPLIED)